

SINCE
1905

Mafatlal[®]



SUPERFINE COMBINATIONS



FAIR TRADE

OUR TRADE VALUE IS BASED ON ETHICS OF VALUE SUCH AS TRANSPARENCY, ACCOUNTABILITY, FAIR TRADING PRACTICE, NO CHILD LABOUR OR FORCED LABOUR IN OUR COMPANY ENSURING GOOD WORKING CONDITION, PROVIDING CAPACITY BUILDING, RESPECT FOR ENVIRONMENT. OUR VALUE STAND STRONG ON OUR GIVEN PRINCIPLE.

SUSTAINABLE DEVELOPMENT

MAFATLAL MEETS THE NEED OF THE PRESENT TEXTILE WORLD WITHOUT COMPROMISING THE ABILITY OF FUTURE GENERATION TO MEET OUR NEEDS. OUR GOAL IS ALL AROUND DEVELOPMENT OF HUMAN, SOCIAL ECONOMICAL AND ENVIRONMENTAL DEVELOPMENT. THE SUSTAINABLE DEVELOPMENT GOAL ARE THE BLUE PRINT TO ACHIEVE A BETTER AND MORE SUSTAINABLE FUTURE OF ALL.



**RESPONSIBLE
MANUFACTURING**

RESPONSIBLE MANUFACTURING

WITH A RESPONSIBLE MANUFACTURING APPROACH, WE WORK ACROSS ON OUR OPERATIONS FROM RAW MATERIAL SOURCING TO YARN MANUFACTURING, FABRIC MANUFACTURING, WAREHOUSING, GARMENT MANUFACTURING AND FROM DESIGN TO DELIVERY - TO BRING A POSITIVE CHANGE.

AZO FREE DYES (APPROVED BY OEKO-TEX)

ORGANIC DYES IS A SOLUTION PROVIDER OFFERING A BROAD RANGE OF HIGH QUALITY DYES. SPECIALITY CHEMICALS IS USED IN A DIVERSE BASE IN OUR PROCESS HOUSE FOR BEST QUALITY FABRIC.



Azo Free Dyes



BREATHABLE FABRICS

OUR FABRIC ARE MADE WITH A RANGE OF P.C / COTTON/ VISCOSE YARN. COTTON AND VISCOSE FIBRE ARE BREATHABLE YARN AND THERE FOR SUITABLE FOR ALL WEATHER. BREATHABLE FABRIC ALLOW MOISTURE TO PASS THROUGH, THUS MAKING IT MORE COMFORTABLE TO WEAR ALL SEASON.





S-301 | BIG BOSS-511

The image displays a school uniform for boys and girls. The boy's outfit consists of a light pink short-sleeved button-down shirt and dark brown trousers. The girl's outfit consists of a light pink long-sleeved button-down shirt and a dark brown pleated skirt. To the right of the models are two fabric swatches: a multi-colored plaid pattern (orange, blue, green, and grey) and a solid dark brown color.

S-302 | COMMANDER-3122

The image displays a school uniform for boys and girls. The boy's outfit consists of a light pink short-sleeved button-down shirt and purple shorts. The girl's outfit consists of a purple dress with a decorative pattern. To the left of the models are two fabric swatches: a multi-colored plaid pattern (purple, yellow, red, and blue) and a solid purple color.



S-303 | BIG BOSS-575

A young boy and girl modeling school uniforms. The boy wears a light pink and white checkered shirt and dark blue trousers. The girl wears a matching checkered shirt with dark blue sleeves and a dark blue skirt. To the right are two fabric swatches: a multi-colored plaid pattern and a solid black fabric with a scalloped edge.

S-304 | BIG BOSS-569

A young boy and girl modeling school uniforms. The boy wears a light brown and white checkered shirt and black trousers. The girl wears a light brown and white checkered dress with black accents. To the left are two fabric swatches: a multi-colored plaid pattern and a solid black fabric with a scalloped edge.



S-305 | BIG BOSS-5111

S-306 | BIG BOSS-578



S-307 | BIG BOSS-564

A young boy and girl modeling school uniforms. The boy wears a pink checkered shirt and dark shorts. The girl wears a pink checkered dress with a dark V-neck and a dark belt. To the right are two fabric swatches: a pink and grey checkered pattern and a solid dark fabric with a scalloped edge.

S-308 | BIG BOSS-598

A young boy and girl modeling school uniforms. The boy wears a light blue and white striped shirt and light green shorts. The girl wears a light blue and white striped dress with a ruffled hem. To the left are two fabric swatches: a light blue and white striped pattern and a solid green fabric with a scalloped edge.



SUPERFINE COMBINATIONS

S-309 | BIG BOSS-571

A young girl and a young boy are shown wearing beige school uniforms. The girl is wearing a beige dress with a subtle pattern, white socks, and black shoes. The boy is wearing a beige short-sleeved shirt and shorts, white socks, and black shoes. To their right, there are two fabric swatches: a yellow and blue plaid pattern and a solid beige fabric.

S-310 | BIG BOSS-596

A young boy and a young girl are shown wearing pink and blue plaid school uniforms. The boy is wearing a pink and blue plaid short-sleeved shirt, a dark tie, dark pants, and black shoes. The girl is wearing a pink and blue plaid skirt, a dark top, white socks, and black shoes. To their left, there are two fabric swatches: a pink, blue, and red plaid pattern and a solid black fabric.

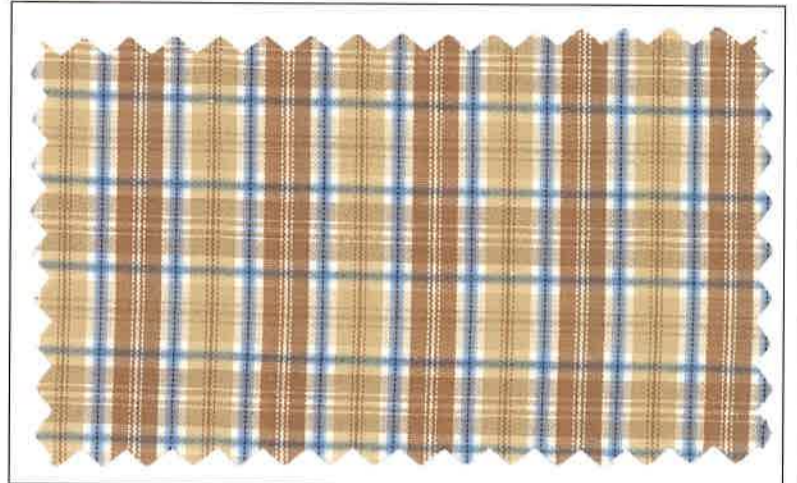


S-311 | BIG BOSS-576

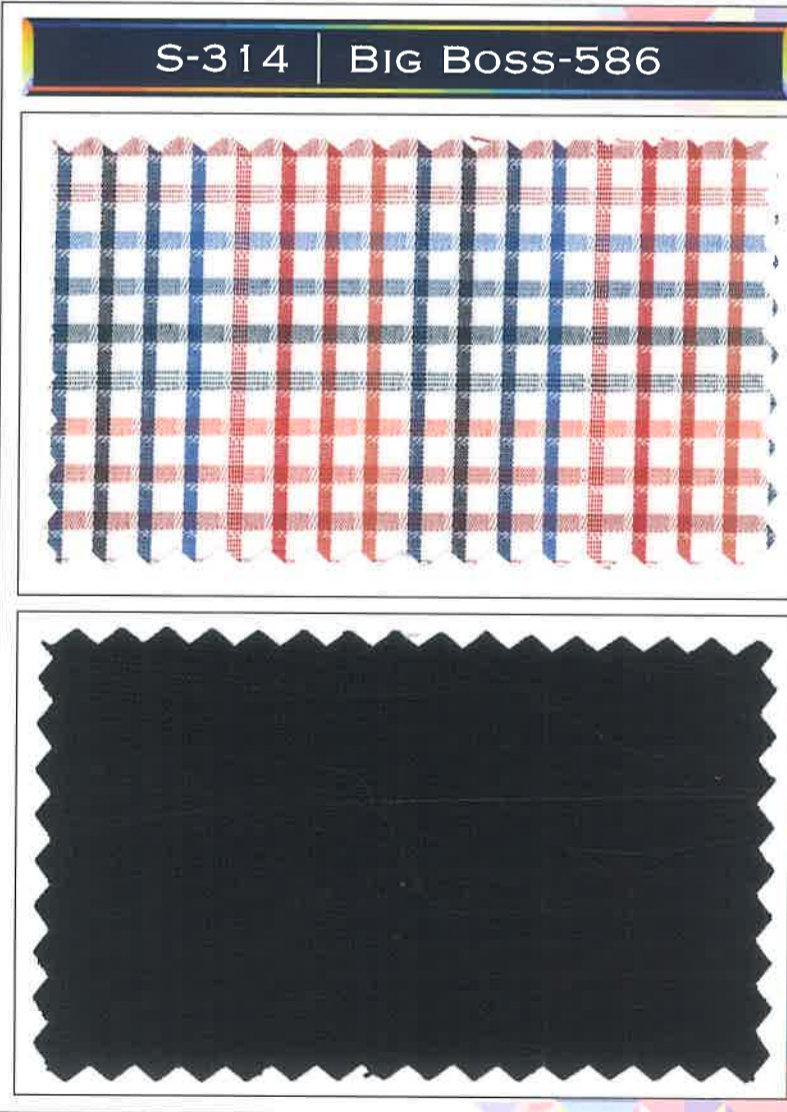
S-312 | BIG BOSS-589



S-313 | BIG BOSS-5101



S-314 | BIG BOSS-586





S-315 | BIG BOSS-567

S-316 | BIG BOSS-525



SUPERFINE COMBINATIONS

S-317 | BIG BOSS-572

S-318 | BIG BOSS-596

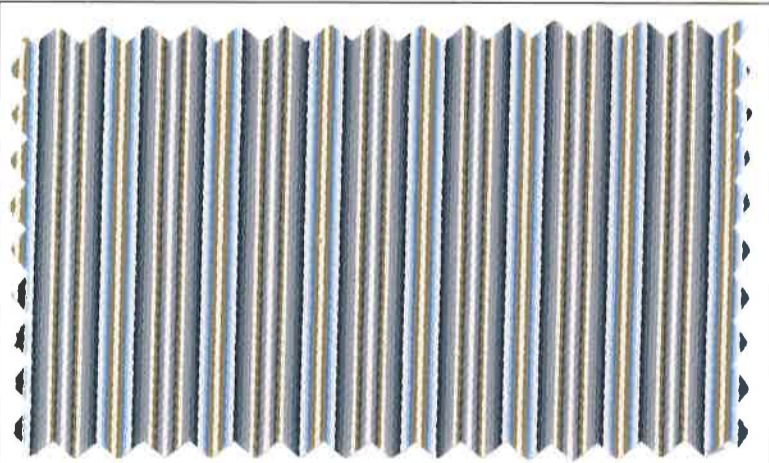




S-321 | BIG BOSS-576



S-322 | BIG BOSS-575





S-323 | BIG BOSS-596

A young boy and girl modeling school uniforms. The boy wears a light purple striped short-sleeved shirt and dark trousers. The girl wears a dark blue long-sleeved shirt, a light purple striped skirt, white socks, and black shoes. To the right are two fabric swatches: a blue and red plaid pattern and a solid black fabric.

S-324 | BIG BOSS-589

A young boy and girl modeling school uniforms. The boy wears a light-colored checkered short-sleeved shirt and dark shorts. The girl wears a dark blue dress with a light-colored checkered collar and a white sash. To the left are two fabric swatches: a yellow and blue plaid pattern and a solid black fabric.





S-327 | BIG BOSS-530

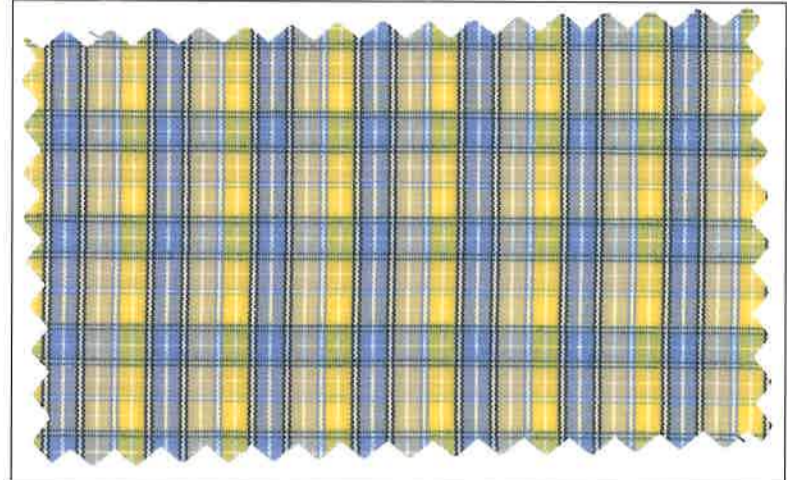
A young girl and a young boy are shown wearing school uniforms. The girl is wearing a blue skirt and a striped shirt. The boy is wearing blue shorts and a striped shirt. To the right are two fabric swatches: a striped pattern and a solid dark blue pattern with a scalloped edge.

S-328 | BIG BOSS-530

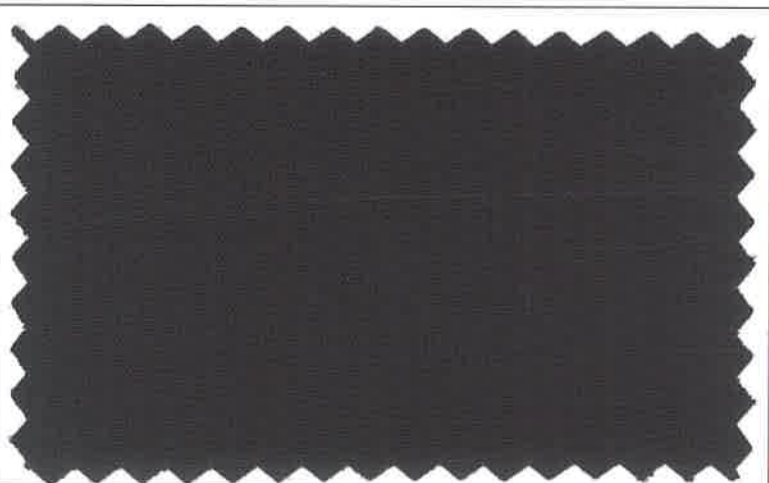
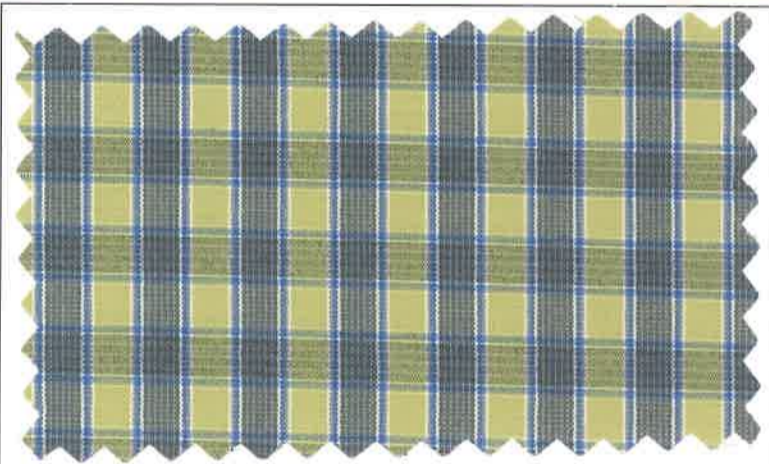
A young girl and a young boy are shown wearing school uniforms. The girl is wearing a blue dress and a blue headband. The boy is wearing blue shorts and a striped shirt. To the left are two fabric swatches: a plaid pattern and a solid dark blue pattern with a scalloped edge.



S-329 | BIG BOSS-570



S-330 | BIG BOSS-584





S-331 | BIG BOSS-514

A young boy and girl modeling school uniforms. The boy is wearing a light-colored checkered shirt, a brown tie, and brown shorts. The girl is wearing a light-colored checkered shirt with brown sleeves and a brown skirt. To the right are two fabric swatches: a yellow and blue plaid pattern and a solid brown fabric.

S-332 | BIG BOSS-503

A young boy and girl modeling school uniforms. The boy is wearing a light-colored checkered shirt and orange trousers. The girl is wearing a light-colored checkered shirt and an orange skirt. To the left are two fabric swatches: a yellow, blue, and orange plaid pattern and a solid brown fabric.





SUPERFINE COMBINATIONS

S-335 | BIG BOSS-590

Two children modeling a school uniform. The girl is wearing a red and white checkered shirt and a red pleated skirt. The boy is wearing a red and white checkered shirt and red shorts. To the right are two fabric swatches: a red, yellow, and grey plaid pattern and a solid red color.

S-336 | BIG BOSS-597

Two children modeling a school uniform. The girl is wearing a light-colored striped shirt with a black necktie and a black skirt. The boy is wearing a light-colored striped shirt and black shorts. To the left are two fabric swatches: a green, yellow, and grey plaid pattern and a solid black color.



S-337 | BIG BOSS-511

Image showing a boy and a girl modeling school uniforms. The boy is wearing a light-colored, short-sleeved button-down shirt and dark shorts. The girl is wearing a dark brown dress over a light-colored, short-sleeved shirt. To the right are two fabric swatches: the top one is a yellow and brown plaid pattern, and the bottom one is a solid dark brown color with a scalloped edge.

S-338 | BIG BOSS-575

Image showing a boy and a girl modeling school uniforms. The boy is wearing a light-colored, short-sleeved button-down shirt and dark shorts. The girl is wearing a light-colored, short-sleeved button-down shirt with a dark tie and a dark skirt. To the left are two fabric swatches: the top one is a blue and yellow plaid pattern, and the bottom one is a solid dark blue color with a scalloped edge.



S-339 | BIG BOSS-579

A young boy and girl are shown wearing school uniforms. The boy is wearing a short-sleeved, vertically striped shirt with a brown pocket and brown shorts. The girl is wearing a short-sleeved, vertically striped dress with a brown belt. To the right of the children are two fabric swatches. The top swatch shows a yellow and brown plaid pattern. The bottom swatch is a solid brown color.

S-340 | BIG BOSS-567

A young boy and girl are shown wearing school uniforms. The boy is wearing a short-sleeved, plaid shirt with a matching tie and khaki shorts. The girl is wearing a short-sleeved, plaid shirt and a matching plaid skirt. To the left of the children are two fabric swatches. The top swatch shows a multi-colored plaid pattern with red, yellow, and blue. The bottom swatch is a solid tan color.



S-341 | BIG BOSS-589

Two children modeling school uniforms. The boy on the left wears a light-colored checkered shirt and dark shorts. The girl on the right wears a matching checkered dress with a dark collar and tie. To the right are two fabric swatches: a multi-colored plaid pattern and a solid black fabric.

S-342 | BIG BOSS-5113

Two children modeling school uniforms. The girl on the left wears a light-colored striped shirt and a dark skirt. The boy on the right wears a matching striped shirt with a dark tie and a dark skirt. To the left are two fabric swatches: a green and blue plaid pattern and a solid black fabric.



S-343 | BIG BOSS-576

A young boy and girl modeling a school uniform. The boy wears a light blue checkered short-sleeved shirt and shorts. The girl wears a light blue dress with a white waistband. To the right are two fabric swatches: a plaid pattern with blue, red, and yellow lines on a white background, and a solid dark grey fabric.

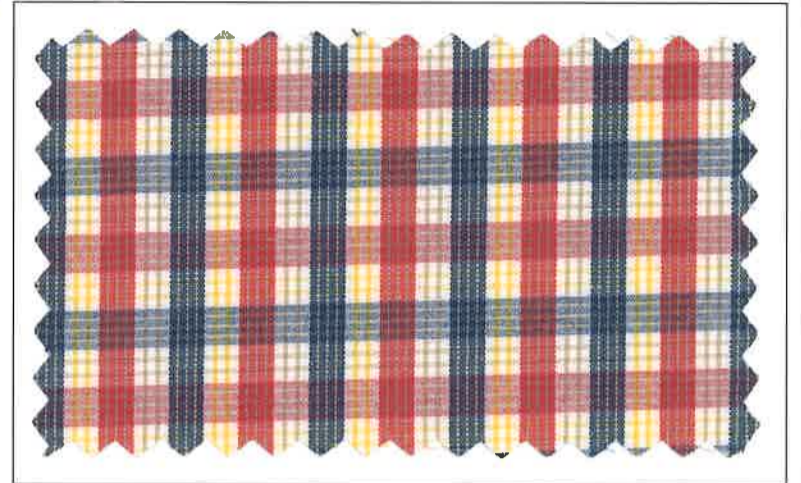
S-344 | BIG BOSS-581

A young girl and boy modeling a school uniform. The girl wears a brown short-sleeved shirt and a beige pleated skirt. The boy wears a light-colored checkered long-sleeved shirt and brown shorts. To the left are two fabric swatches: a plaid pattern with yellow, red, and brown lines on a white background, and a solid dark brown fabric.

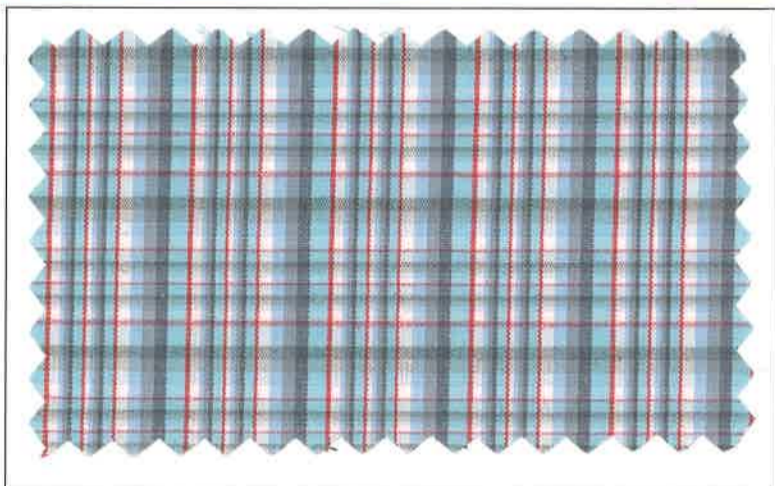


SUPERFINE COMBINATIONS

S-345 | BIG BOSS-5111

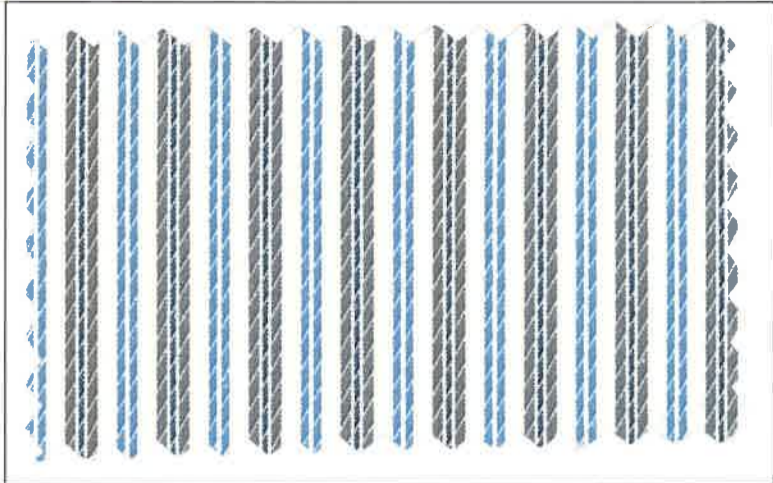


S-346 | BIG BOSS-575

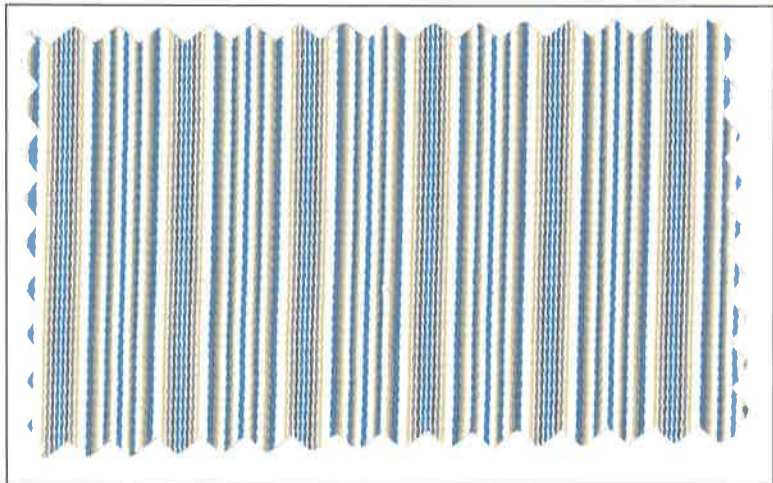




S-347 | BIG BOSS-564



S-348 | BIG BOSS-585





S-349 | BIG BOSS-576

A young boy and girl modeling school uniforms. The boy wears a pink and white striped shirt and grey trousers. The girl wears a matching striped shirt, a grey vest, and a grey skirt. To the right are two fabric swatches: the top one shows a multi-colored vertical stripe pattern, and the bottom one is a solid dark grey textured fabric.

S-350 | BIG BOSS-572

A young boy and girl modeling school uniforms. The boy wears a pink and white striped short-sleeved shirt and grey shorts. The girl wears a matching striped long-sleeved shirt and a grey pleated skirt. To the left are two fabric swatches: the top one shows a multi-colored vertical stripe pattern, and the bottom one is a solid dark grey textured fabric.

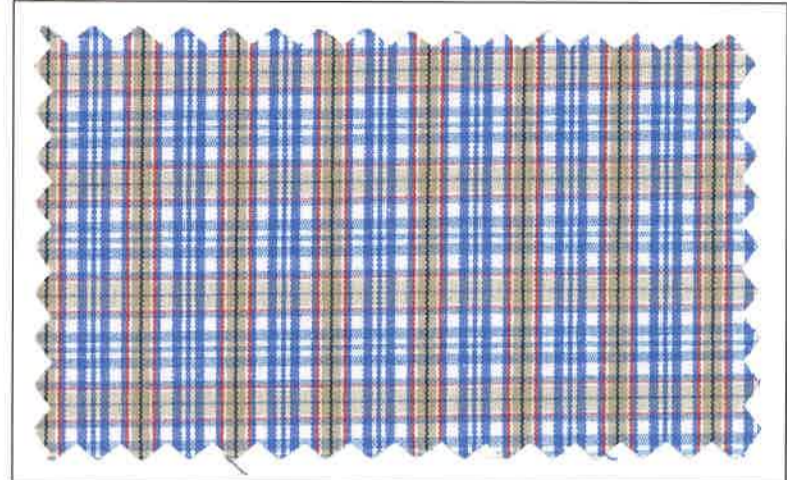


S-351 | BIG BOSS-597

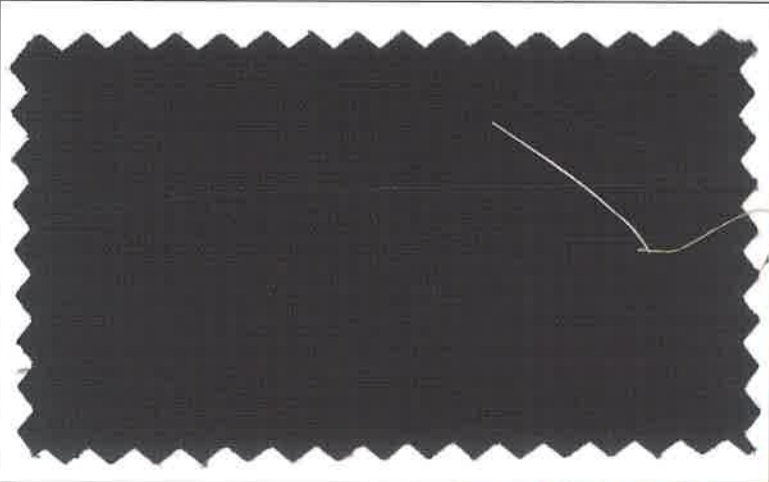
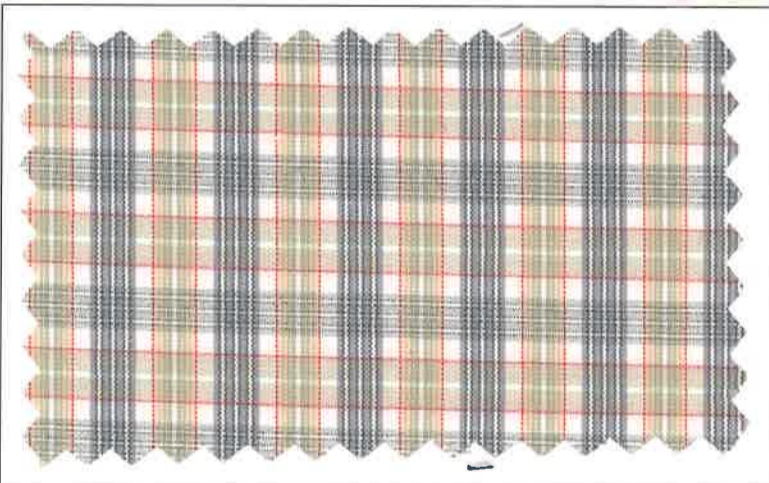
S-352 | BIG BOSS-581



S-353 | BIG BOSS-525

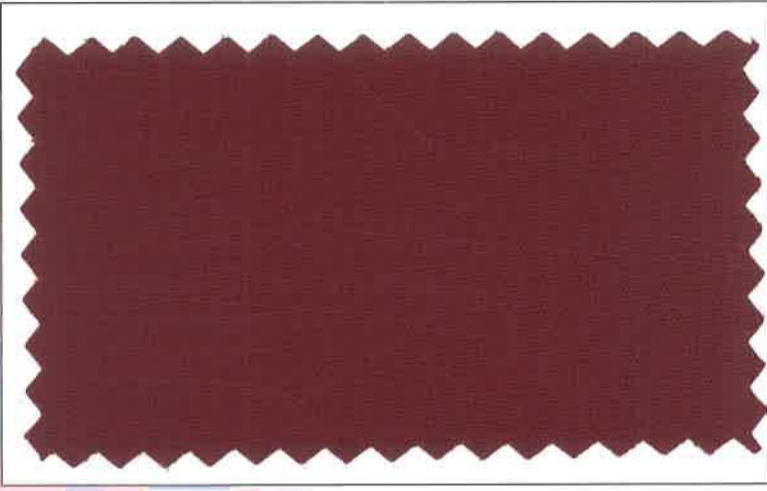
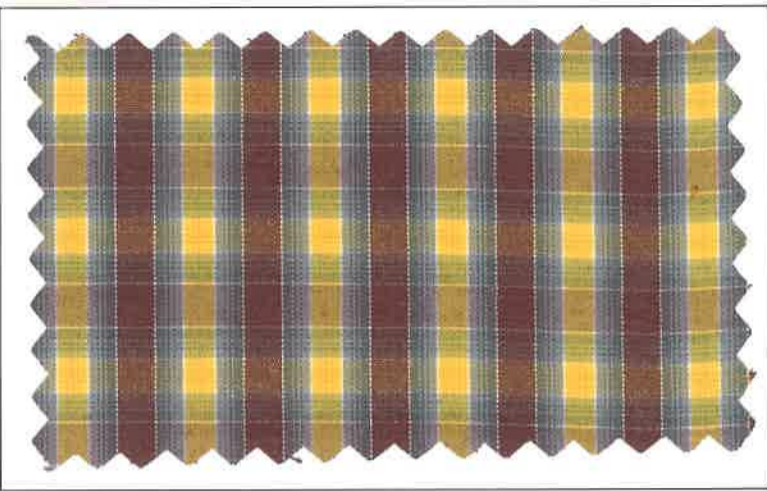


S-354 | BIG BOSS-584

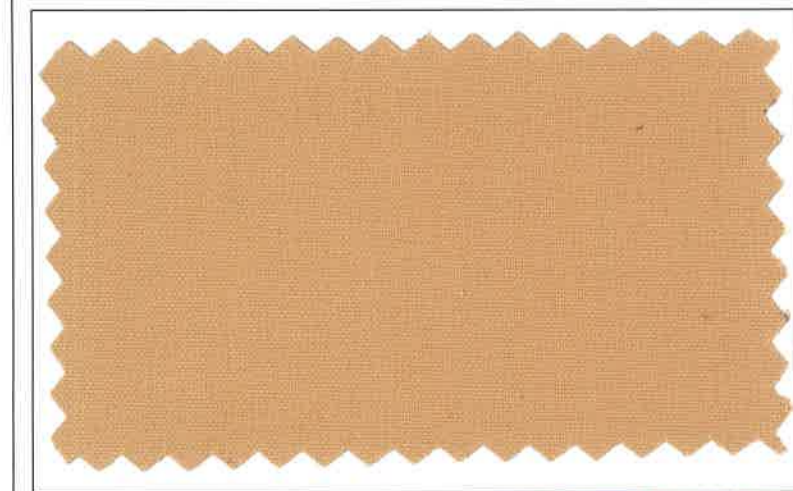
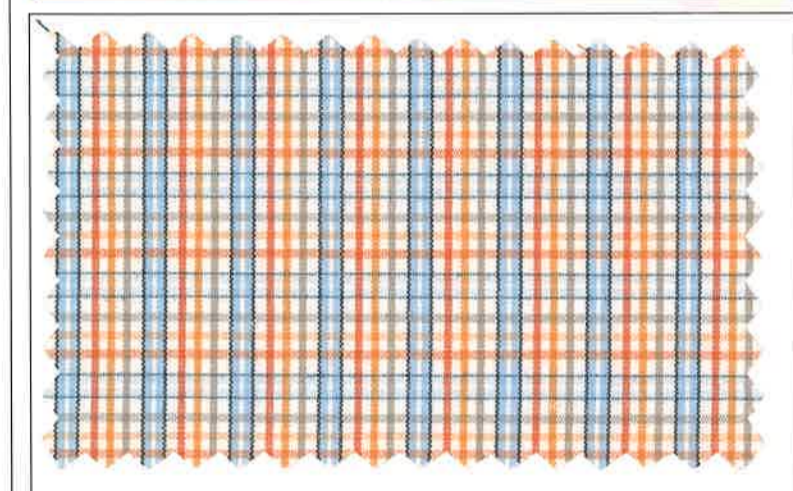




S-355 | BIG BOSS-512



S-356 | BIG BOSS-503





S-357 | BIG BOSS-5101

Modeling a school uniform consisting of a light pink short-sleeved shirt with a brown tie and brown shorts for the boy, and a brown sleeveless dress with a white waistband for the girl. The fabric swatches show a plaid pattern in orange, grey, and white, and a solid brown fabric.

S-358 | BIG BOSS-581

Modeling a school uniform consisting of a light pink short-sleeved dress for the girl and a light pink short-sleeved shirt with brown shorts for the boy. The fabric swatches show a plaid pattern in orange, grey, and white, and a solid brown fabric.



S-359 | BIG BOSS-589

S-360 | BIG BOSS-571





S-363 | BIG BOSS-5113

A young girl and a young boy modeling school uniforms. The girl wears a light-colored short-sleeved shirt with dark trim and a dark skirt. The boy wears a similar shirt and dark trousers. To the right are two fabric swatches: the top one is a multi-colored plaid pattern, and the bottom one is a solid dark green color.

S-364 | BIG BOSS-5101

A young girl and a young boy modeling school uniforms. The girl wears a light-colored short-sleeved top with a dark waistband and a dark skirt. The boy wears a light-colored short-sleeved shirt with a dark tie and dark shorts. To the left are two fabric swatches: the top one is a multi-colored plaid pattern, and the bottom one is a solid dark brown color.

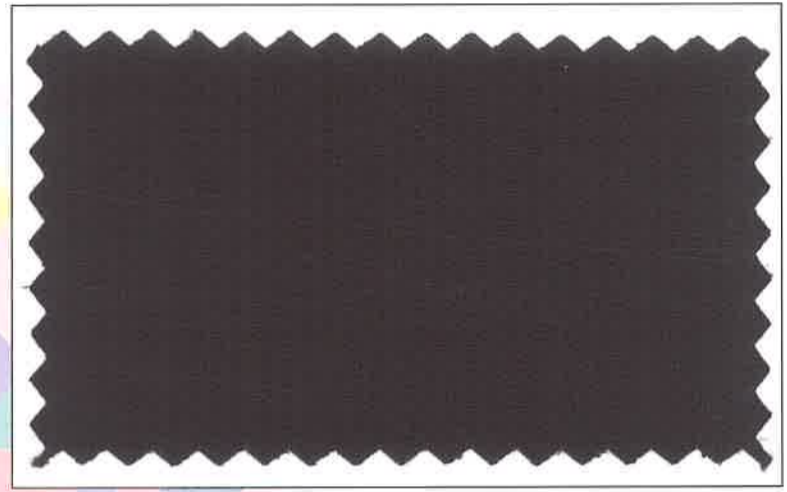
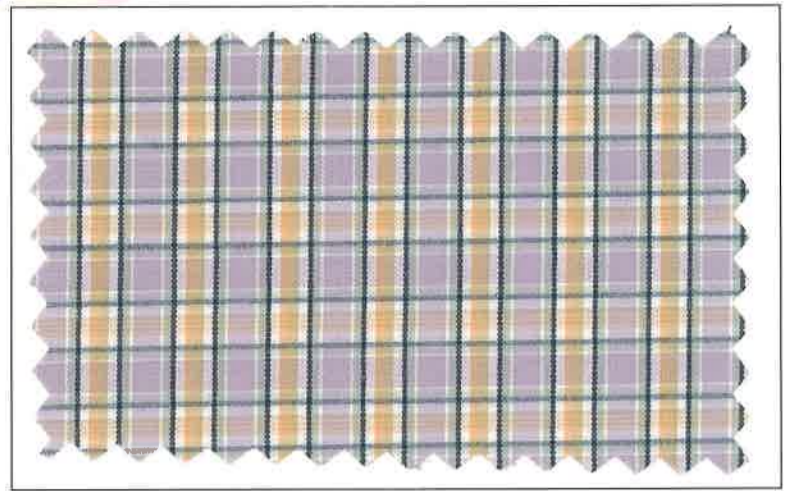


S-365 | BIG BOSS-581

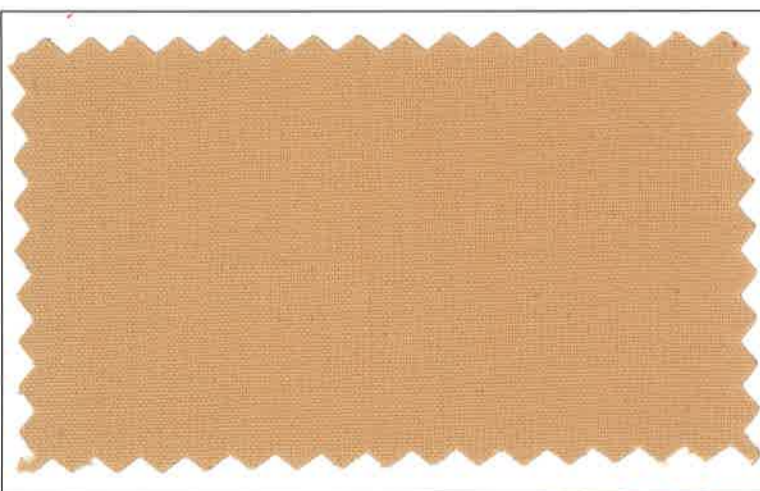
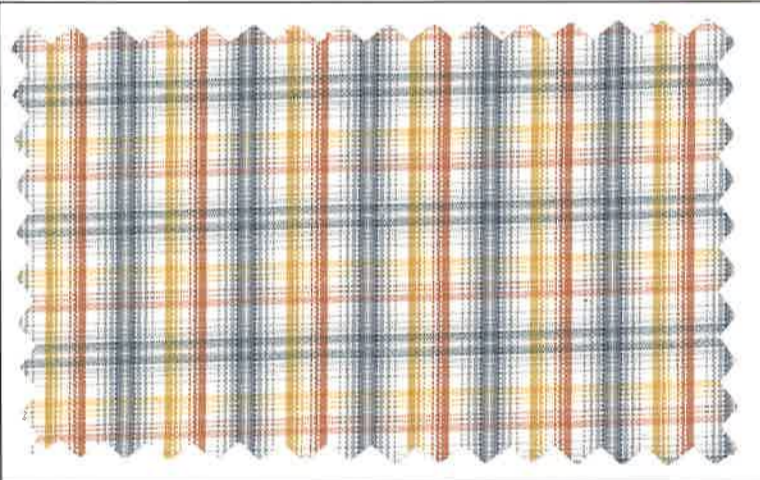
S-366 | BIG BOSS-576



S-367 | BIG BOSS-589

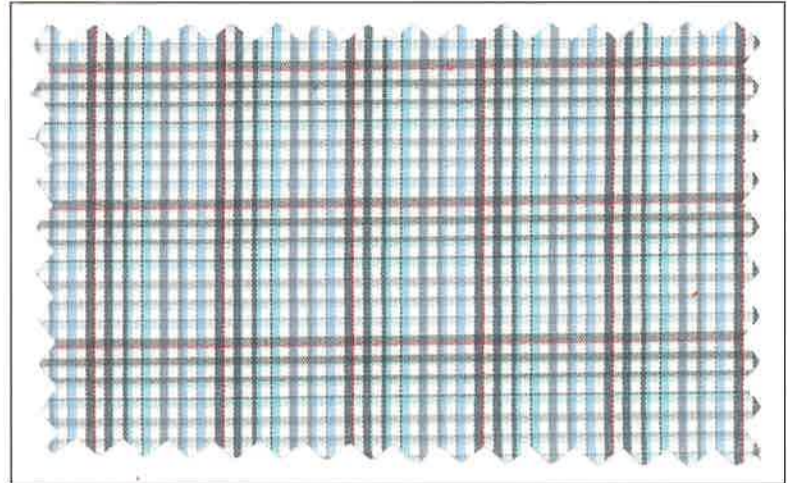


S-368 | BIG BOSS-503

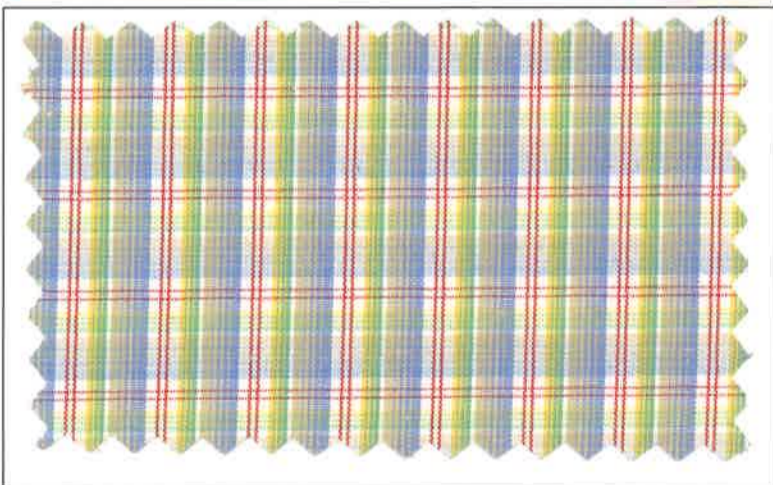




S-369 | BIG BOSS-575



S-370 | BIG BOSS-525





S-371 | BIG BOSS-576

Image showing a young boy and girl modeling school uniforms. The boy is wearing a short-sleeved, light-colored checkered shirt and light purple trousers. The girl is wearing a long-sleeved, light-colored checkered shirt with a dark purple vest and a light purple pleated skirt. To the right are two fabric swatches: the top one is a plaid pattern with green, blue, and yellow lines on a light background, and the bottom one is a solid dark grey color.

S-372 | BIG BOSS-5101

Image showing a young boy and girl modeling school uniforms. The boy is wearing a short-sleeved, light-colored checkered shirt and brown shorts. The girl is wearing a short-sleeved, light-colored checkered shirt with a brown vest and a light-colored pleated skirt. To the left are two fabric swatches: the top one is a plaid pattern with red, green, and yellow lines on a light background, and the bottom one is a solid brown color.



S-373 | BIG BOSS-5113

A young man and woman modeling school uniforms. The man is wearing a light green checkered shirt and dark trousers. The woman is wearing a light green checkered shirt and a dark skirt. To the right are two fabric swatches: the top one is a green and yellow plaid pattern, and the bottom one is a solid dark green color.

S-374 | BIG BOSS-572

A young man and woman modeling school uniforms. The man is wearing a light blue and white checkered shirt and light blue trousers. The woman is wearing a light blue and white checkered shirt and a light blue skirt. To the left are two fabric swatches: the top one is a blue and yellow plaid pattern, and the bottom one is a solid dark blue color.



S-375 | BIG BOSS-5113

S-376 | BIG BOSS-586



S-377 | BIG BOSS-568

Image showing a young boy and girl modeling school uniforms. The boy is wearing a striped short-sleeved shirt, a black tie, and a dark skirt. The girl is wearing a dark dress with a striped top section and a white sash. To the right are two fabric swatches: the top one shows vertical stripes in brown, red, and black, and the bottom one is a solid black fabric with a scalloped edge.

S-378 | BIG BOSS-596

Image showing a young boy and girl modeling school uniforms. The boy is wearing a plaid short-sleeved shirt, a black tie, and dark trousers. The girl is wearing a plaid short-sleeved shirt with a dark collar and a dark skirt. To the left are two fabric swatches: the top one shows a plaid pattern with red, yellow, and blue, and the bottom one is a solid black fabric with a scalloped edge.





S-381 | BIG BOSS-597

A boy and a girl are shown wearing school uniforms. The boy is wearing a striped shirt and dark trousers. The girl is wearing a dark dress over a striped shirt. To the right are two fabric swatches: a colorful plaid pattern and a solid black fabric with a scalloped edge.

S-382 | BIG BOSS-595

A boy and a girl are shown wearing school uniforms. The boy is wearing a striped shirt and dark trousers. The girl is wearing a striped dress over a striped shirt. To the left are two fabric swatches: a colorful plaid pattern and a solid black fabric with a scalloped edge.



S-383 | BIG BOSS-575

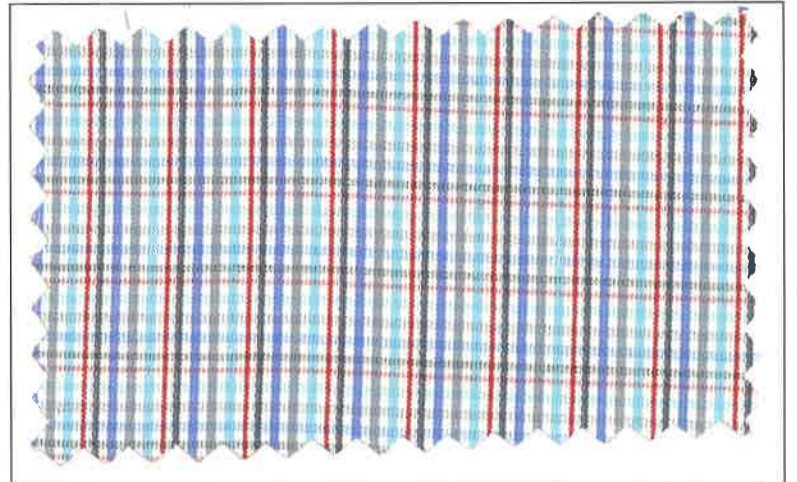
A young boy and girl modeling school uniforms. The boy wears a short-sleeved checkered shirt and dark shorts. The girl wears a dark blue dress with a matching vest and a belt. To the right are two fabric swatches: a colorful checkered pattern and a solid dark blue fabric.

S-384 | BIG BOSS-511

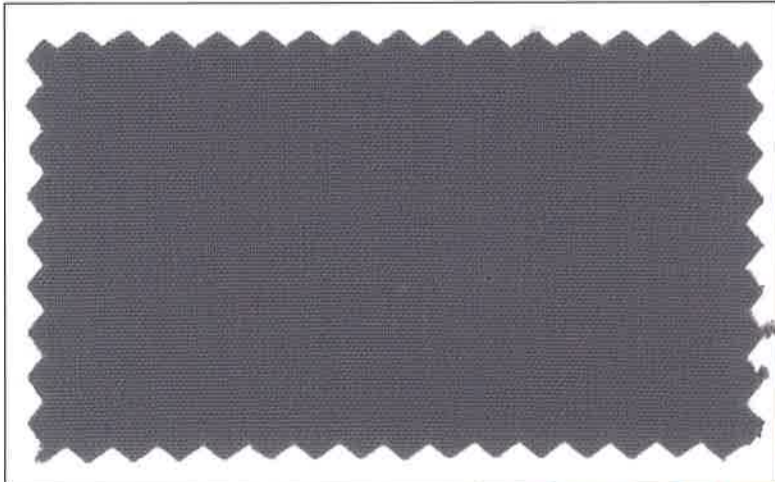
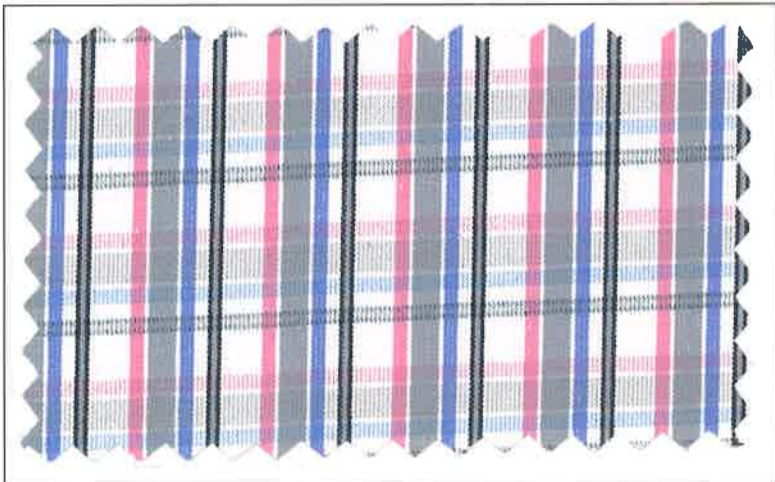
A young boy and girl modeling school uniforms. The boy wears a short-sleeved striped shirt and dark trousers. The girl wears a dark brown dress with a matching vest and a belt. To the left are two fabric swatches: a colorful checkered pattern and a solid dark brown fabric.



S-385 | BIG BOSS-5111



S-386 | BIG BOSS-576





S-387 | BIG BOSS-541

A young girl and a young boy are shown wearing school uniforms. The girl is wearing a blue dress with a white checkered collar and cuffs. The boy is wearing a blue and white checkered shirt with a blue tie and blue shorts. To the right of the models are two fabric swatches: a multi-colored plaid pattern and a solid dark blue fabric with a scalloped edge.

S-388 | BIG BOSS-596

A young boy and a young girl are shown wearing school uniforms. The boy is wearing a purple and white striped shirt with a dark collar and dark shorts. The girl is wearing a dark blue dress with a white checkered collar and cuffs. To the left of the models are two fabric swatches: a multi-colored plaid pattern and a solid dark blue fabric with a scalloped edge.



SUPERFINE COMBINATIONS

S-389 | BIG BOSS-569

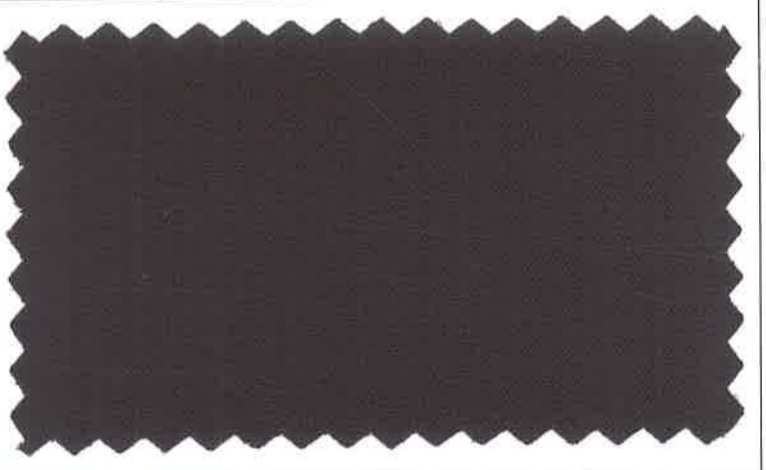
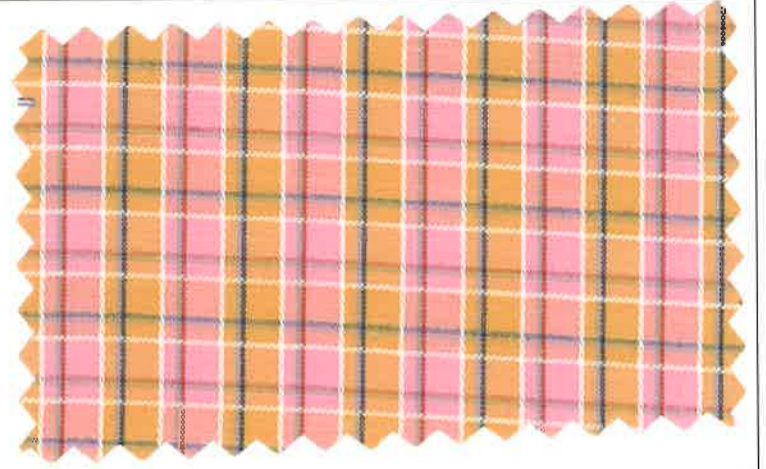
Image showing a young boy and girl modeling school uniforms. The boy is wearing a short-sleeved, button-down shirt with a yellow, green, and black plaid pattern and dark trousers. The girl is wearing a dark brown dress over a matching plaid shirt, white socks, and black shoes. To the right are two fabric swatches: the top one shows the plaid pattern, and the bottom one is solid black.

S-390 | BIG BOSS-585

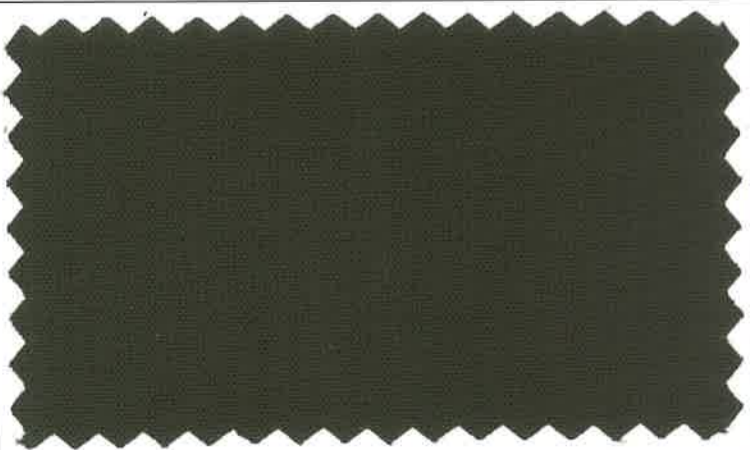
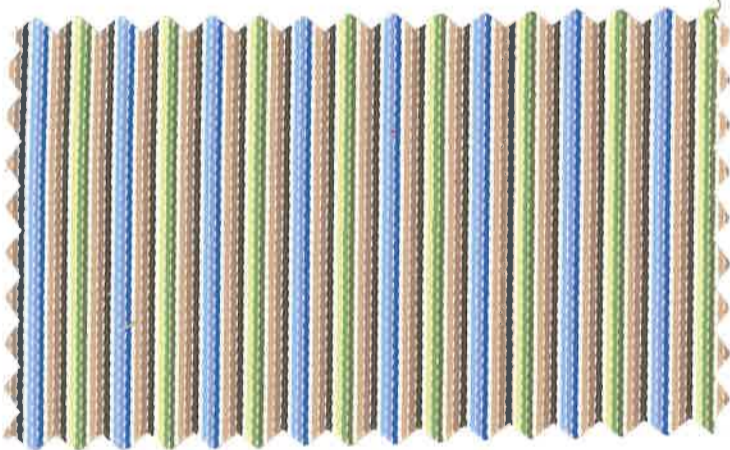
Image showing a young boy and girl modeling school uniforms. The boy is wearing a short-sleeved, button-down shirt with a blue and white plaid pattern and dark trousers. The girl is wearing a long-sleeved, button-down shirt with a blue and white plaid pattern and dark trousers. To the left are two fabric swatches: the top one shows the plaid pattern, and the bottom one is solid black.



S-391 | BIG BOSS-589

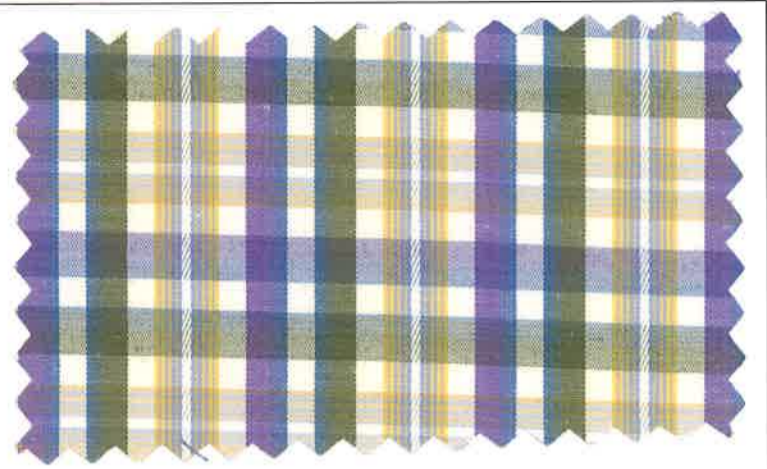


S-392 | BIG BOSS-597

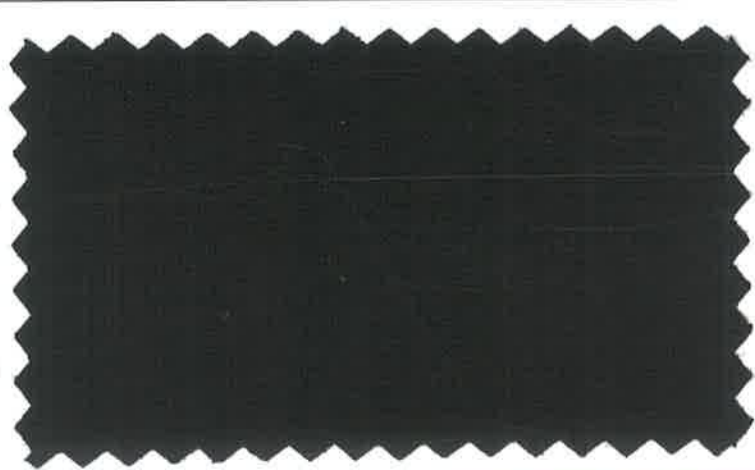
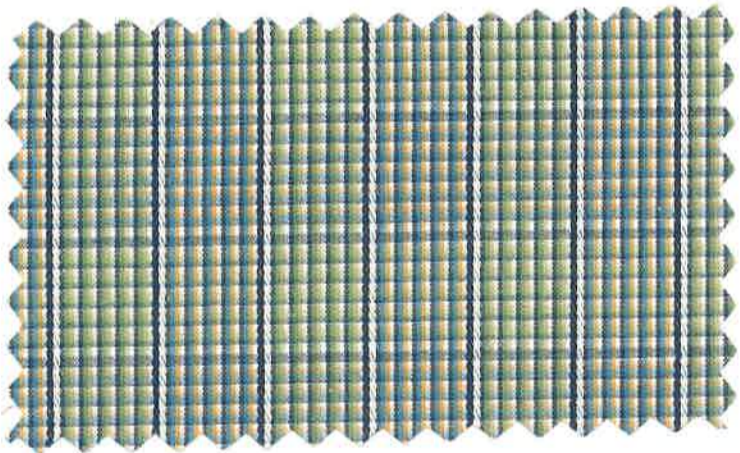




S-393 | BIG BOSS-525



S-394 | BIG BOSS-580





S-395 | BIG BOSS-575

Image showing a woman and a man modeling school uniforms. The woman is wearing a blue and white checkered dress with black trim, black leggings, and black shoes. The man is wearing a blue and white checkered shirt, black trousers, and black shoes. To the right are two fabric swatches: the top one shows a multi-colored plaid pattern (green, blue, purple, white) and the bottom one is a solid black fabric.

S-396 | BIG BOSS-572

Image showing a girl and a boy modeling school uniforms. The girl is wearing a grey dress with a red and white checkered collar and cuffs, black socks, and black shoes. The boy is wearing a red and white checkered short-sleeved shirt with a grey tie, grey shorts, black socks, and black shoes. To the left are two fabric swatches: the top one shows a multi-colored plaid pattern (red, yellow, blue, white) and the bottom one is a solid black fabric.





SUPERFINE COMBINATIONS

S-399 | BIG BOSS-5113

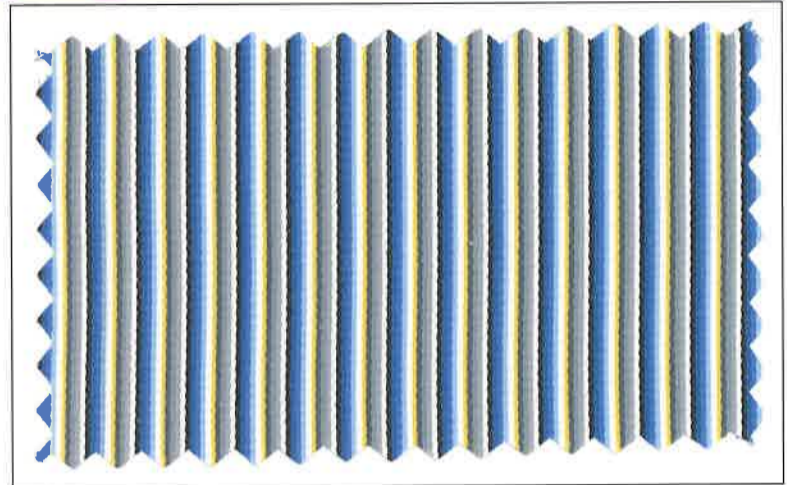
Modeling a school uniform consisting of a black dress with a green and white striped shirt for the girl, and a green and white striped shirt with a black tie and shorts for the boy. The fabric swatches show a multi-colored plaid pattern and a solid black color.

S-400 | BIG BOSS-525

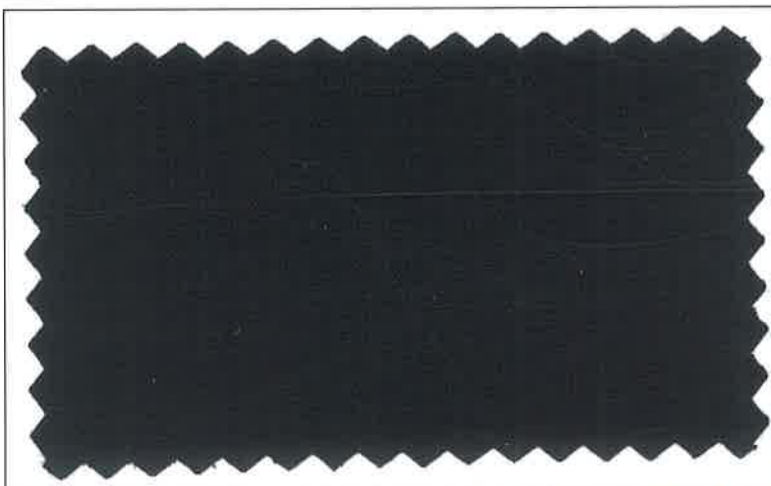
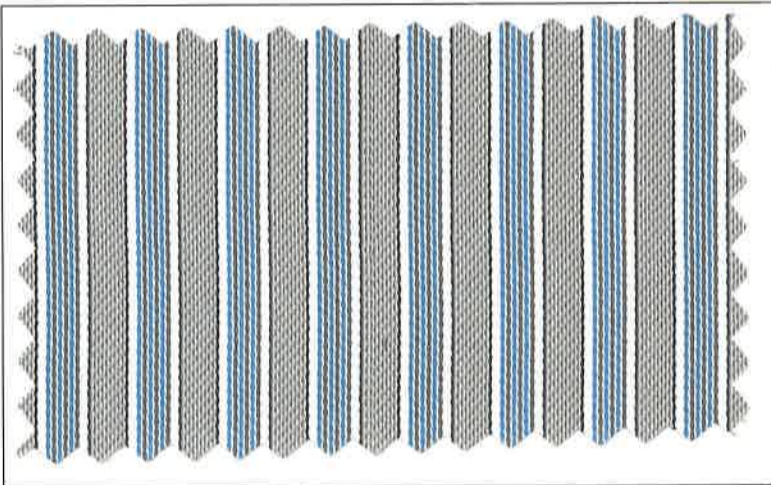
Modeling a school uniform consisting of a blue and white striped shirt with a blue skirt for the girl, and a blue and white striped shirt with blue trousers for the boy. The fabric swatches show a blue and white striped pattern and a solid dark blue color.



S-401 | BIG BOSS-5111



S-402 | BIG BOSS-586





S-403 | BIG BOSS-569

S-404 | BIG BOSS-524



S-405 | BIG BOSS-585

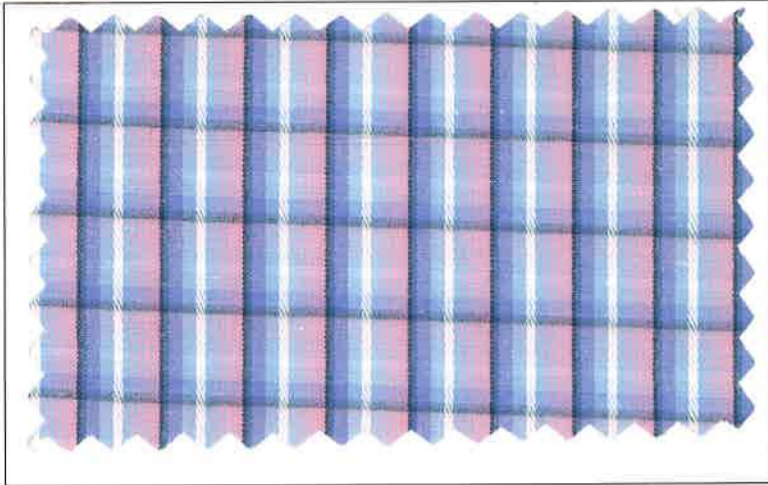
Modeling a school uniform consisting of a blue and white checkered short-sleeved shirt and dark blue trousers for the boy, and a blue and white checkered dress with a dark blue skirt and a dark blue bag for the girl. The fabric swatches show a blue, orange, and white plaid pattern and a solid dark blue fabric with a scalloped edge.

S-406 | BIG BOSS-5111

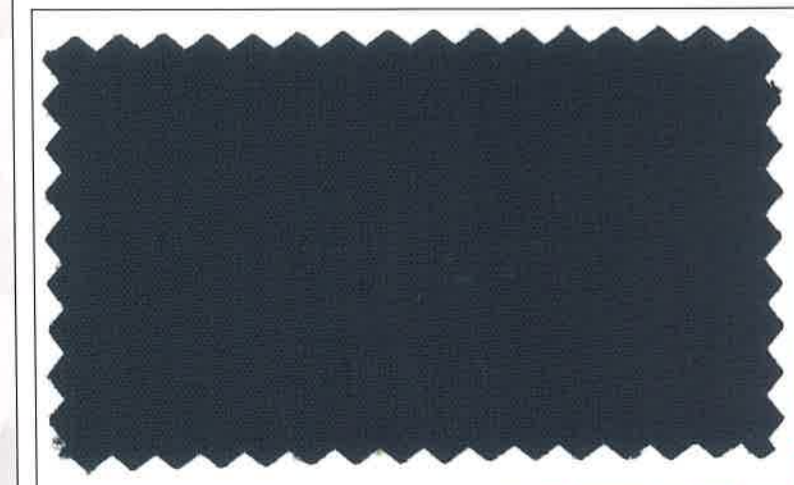
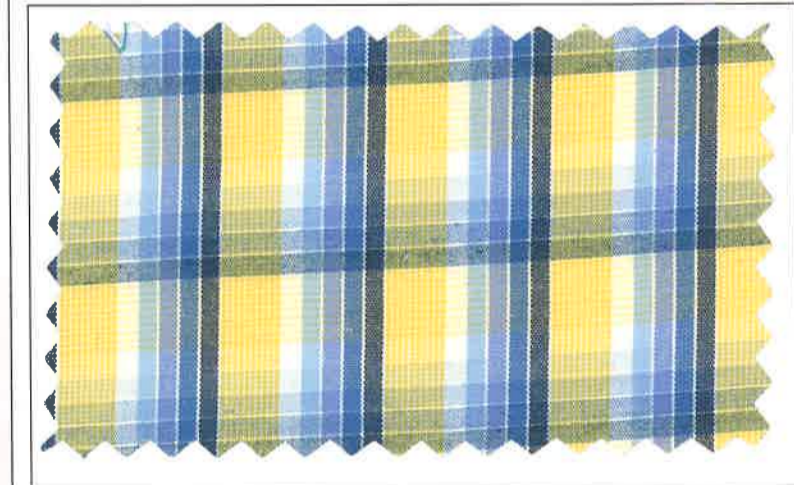
Modeling a school uniform consisting of a blue and white checkered short-sleeved shirt and dark blue shorts for the boy, and a blue and white checkered shirt under a dark blue vest and a dark blue skirt with a white waistband for the girl. The fabric swatches show a blue, orange, and white plaid pattern and a solid dark blue fabric with a scalloped edge.



S-407 | BIG BOSS-596



S-408 | BIG BOSS-595



SINCE 1905
Mafatlal[®]



ARVIND MAFATLAL GROUP
The ethics of excellence



MZ | MAFATLAL
ZEE FABRIC

✓ OK



ARVIND MAFATLAL GROUP
The ethics of excellence



ME | MAFATLAL
ZEE FABRIC

Office Premises no.7&8, Plot no.1825, Lotus House, Vitthaldas Thakersey Marg,
New Marine Lines, Near Liberty Cinema, Mumbai-400020