



Superstripes



MAFATLAL INDUSTRIES LIMITED

THE COMPANY

The philosophy of Mafatlal Industries Limited rests firmly in traditional value and modern technology. The flagship company of the Arvind Mafatlal Group, Mafatlal Industries Ltd. has been a leader in the textile industry for over 100 years. Equipped with world-class technology, the Company's manufacturing units in Navsari and Nandid have the capacity to produce various kinds of premium fabrics.

PRODUCTS

MIL's product portfolio comprises a complete range of products consisting of Yarn-dyed Shirtings, Suitings, Voiles Prints, Linens, Bleached White Fabrics, Rubia, Value-added and Fashion Denims, Bottom Weights, Corduroys, School Uniforms, Corporate / Institutional Uniforms, Bed & Bath Linen and Readymades, Mafatlal Industries Ltd. manufactures Fabrics in Cotton, Linen and Blends like Polyester / Cotton, Polyester / Viscose, Cotton / Lycra, PV/Lycra, Terry Rayon & Polyester / Wool.

SCHOOL UNIFORM

Mafatlal has brought about a revolutionary change in the uniform segment by developing a 600 colour combo coordinate booklets for shirt, trouser and skirt combination for retailers, school uniform makers/converters, which will give them a wide range of designs to choose from. This makes it convenient and easy to decide on the right combination. All our high quality yarn dyed school uniform fabrics are available in more than 5000 designs in checks, stripes, twill checks and plains. We are the first company to introduce eco-friendly fibre-dyed suiting in the school uniform range. Fibre dyed suiting have the advantage of higher colour depth and retention. We offer over 60 shades in the fibre-dyed suitings range.

UNIFORM FOR DEFENCE AND ARMED FORECES

Uniforms are supposed to instill pride in individuals about their organisations. Mafatlals does this and more by supplying quality fabrics and readymade for various organization including Defence establishment, Armed forces Police departments and Central as well as state gorments establishments .With a customer base of over 1000 reputed organization , Mafatlal Industries is the undisputed leader in Corporates/Institutional uniform fabric busniess.

UNIFORM FOR CORPORATE AND RETAILERS

Increasingly , the corporate sector is paying a lot of attention to the way their employees are attired ,espacially in service sector like airlines,retail,hospitality,etc. With design playing a crucial role , our in-house team of designer offer their assistance in design selection and we undertake orders for readymade uniforms.



FAIR TRADE

OUR TRADE VALUE IS BASED ON ETHICS OF VALUE SUCH AS TRANSPARENCY, ACCOUNTABILITY, FAIR TRADING PRACTICE, NO CHILD LABOUR OR FORCED LABOUR IN OUR COMPANY ENSURING GOOD WORKING CONDITION, PROVIDING CAPACITY BUILDING, RESPECT FOR ENVIRONMENT. OUR VALUE STAND STRONG ON OUR GIVEN PRINCIPLE.



SUSTAINABLE DEVELOPMENT

MAFATLAL MEETS THE NEED OF THE PRESENT TEXTILE WORLD WITHOUT COMPROMISING THE ABILITY OF FUTURE GENERATION TO MEET OUR NEEDS. OUR GOAL IS ALL AROUND DEVELOPMENT OF HUMAN, SOCIAL, ECONOMIC AND ENVIRONMENTAL DEVELOPMENT. THE SUSTAINABLE DEVELOPMENT GOAL ARE THE BLUE PRINT TO ACHIEVE A BETTER AND MORE SUSTAINABLE FUTURE OF ALL.



**RESPONSIBLE
MANUFACTURING**

RESPONSIBLE MANUFACTURING

WITH A RESPONSIBLE MANUFACTURING APPROACH, WE WORK ACROSS OUR OPERATIONS FROM RAW MATERIAL SOURCING TO YARN MANUFACTURING, FABRIC MANUFACTURING, WAREHOUSING, GARMENT MANUFACTURING AND FROM DESIGN TO DELIVERY - TO BRING A POSITIVE CHANGE.



AZO FREE DYES (APPROVED BY OEKO-TEX)

ORGANIC DYES IS A SOLUTION PROVIDER OFFERING A BROAD RANGE OF HIGH QUALITY DYES. SPECIALITY CHEMICALS IS USED IN A DIVERSE BASE IN OUR PROCESS HOUSE FOR BEST QUALITY FABRIC.

Azo Free Dyes



BREATHABLE FABRICS

OUR FABRIC ARE MADE WITH A RANGE OF PC / COTTON/ VISCOSE YARN. COTTON AND VISCOUS FIBRE ARE BREATHABLE YARN AND THERE FOR SUITABLE FOR ALL WEATHER. BREATHABLE FABRIC ALLOW MOISTURE TO PASS THROUGH, THUS MAKING IT MORE COMFORTABLE TO WEAR ALL SEASON.



INDEX

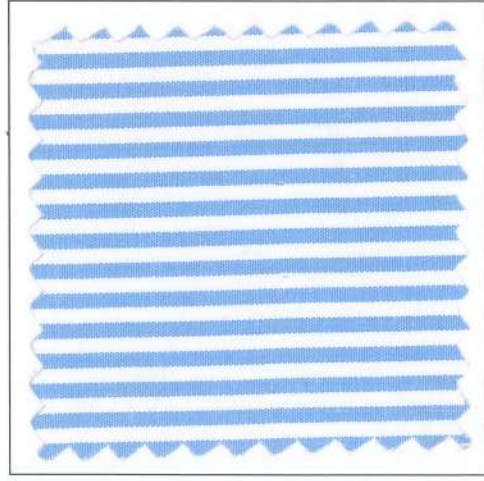
Super Stripes

SR. NO.	TRADE NAME	REMARK	WIDTH CMS	PAGE NO.
01	CASIO	POLYESTER COTTON	89	01
02	TRUMPET	POLYESTER COTTON	89	05
03	WHISTLE	POLYESTER COTTON	89	07
04	FLUTE	POLYESTER COTTON	89	08
05	GUITAR	POLYESTER COTTON	89	09
06	OFFICER CHOICE	POLYESTER COTTON	89	10
07	BRISBANE	POLYESTER COTTON	147	11
08	HUDSON	POLYESTER COTTON	147	12
09	BOLT	POLYESTER COTTON	147	13
10	BLAZE	POLYESTER COTTON	147	17
11	TAURUS	POLYESTER COTTON	147	18

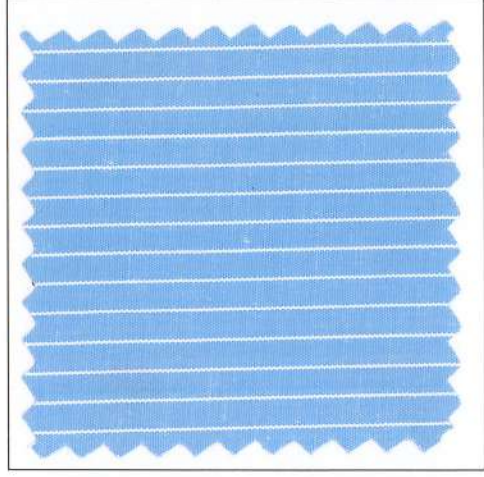
Super Stripes

CASIO

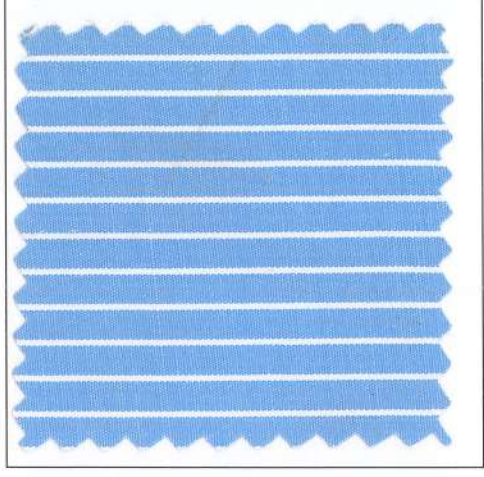
MAFATLAL
ARVIND MAFATLAL GROUP
The ethics of excellence



01



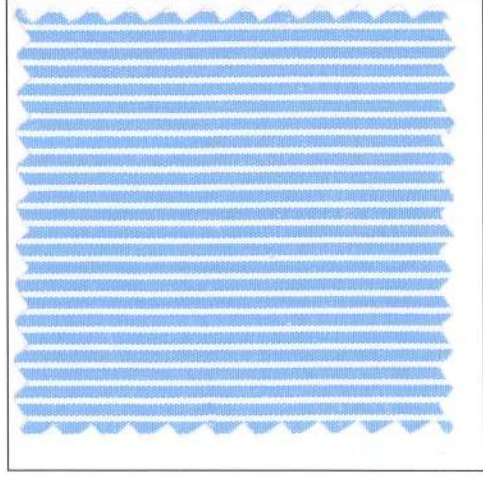
02



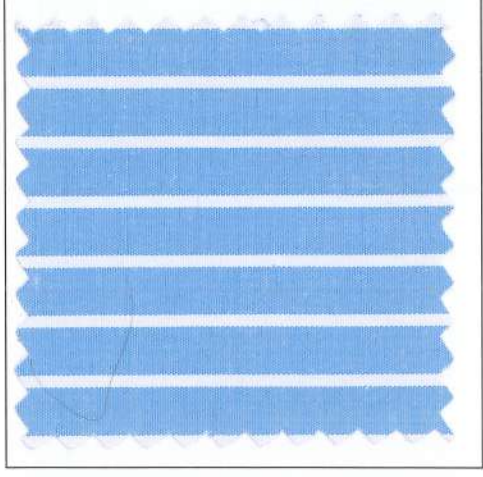
03



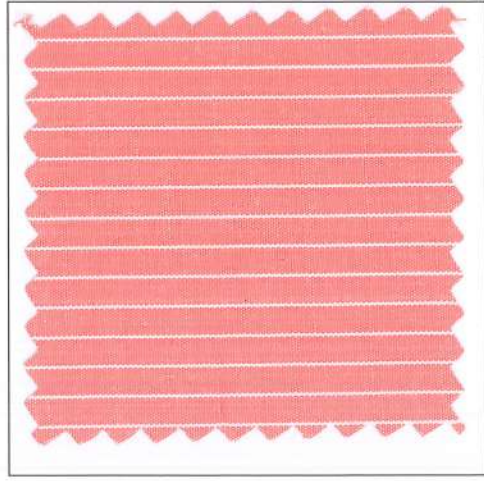
04



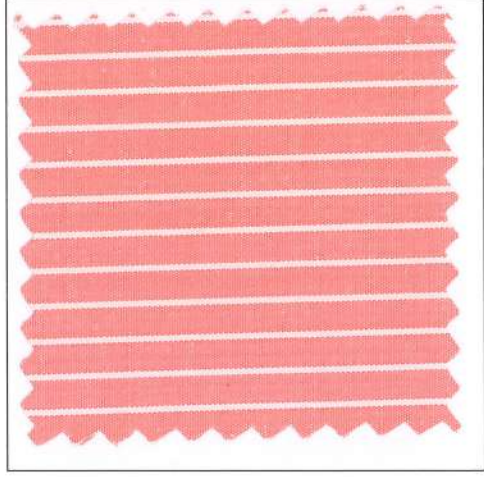
05



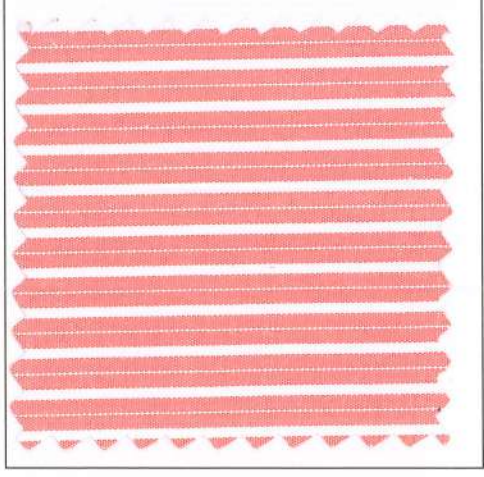
06



12



13



14



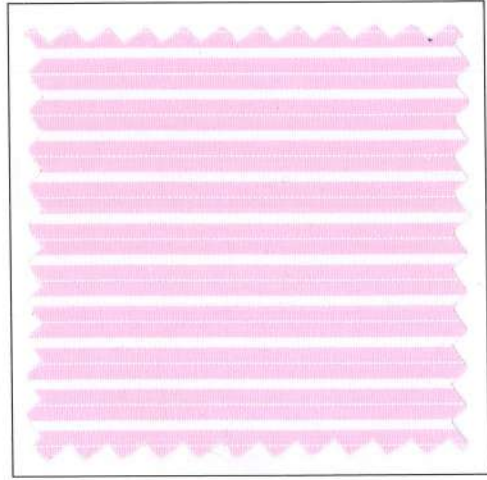
31



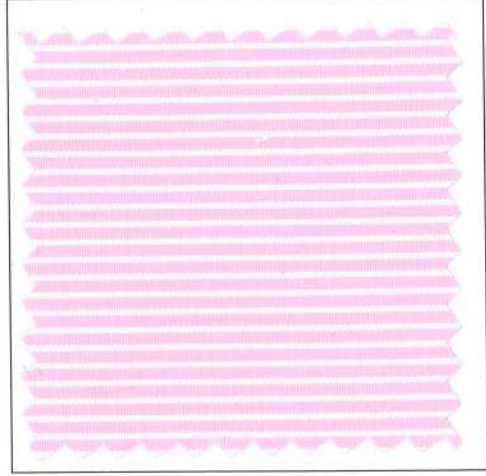
32



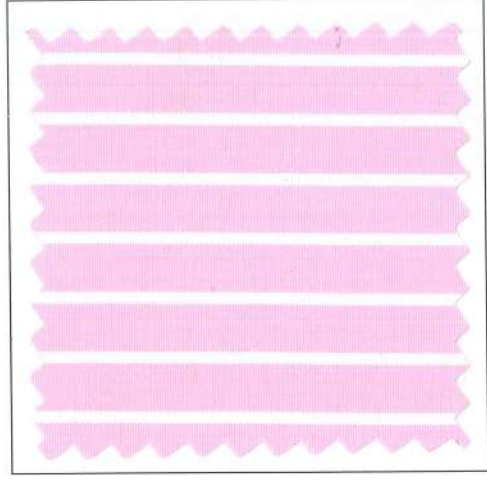
33



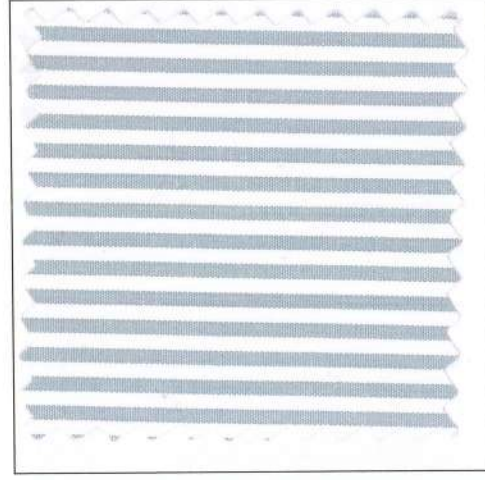
34



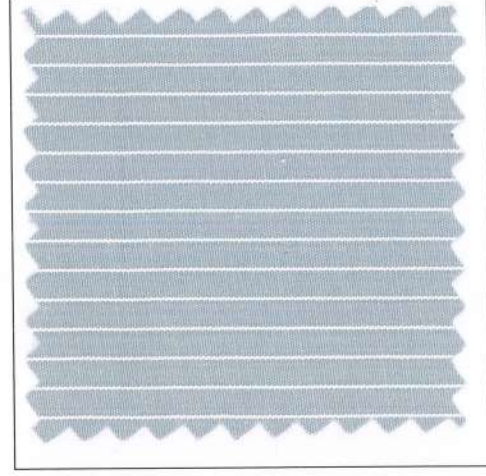
35



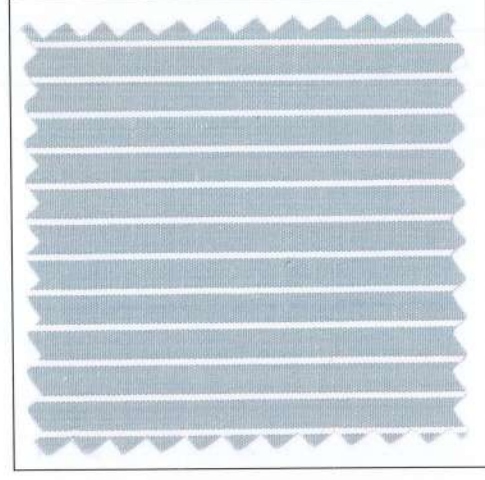
36



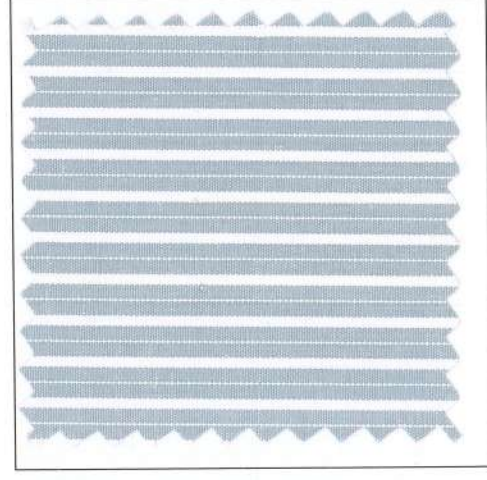
51



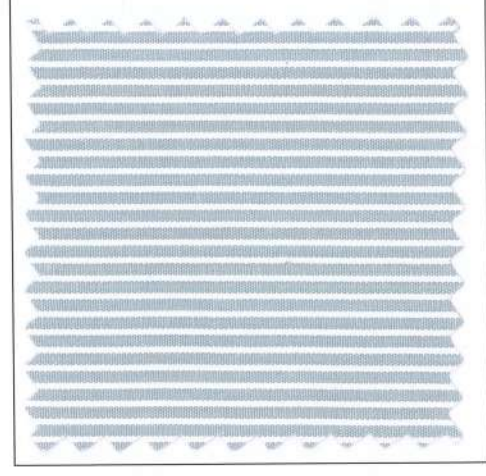
52



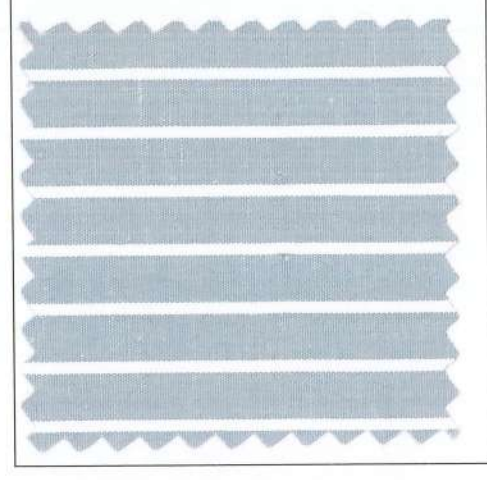
53



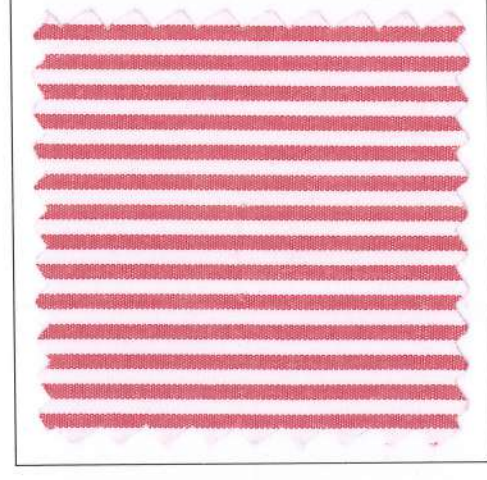
54



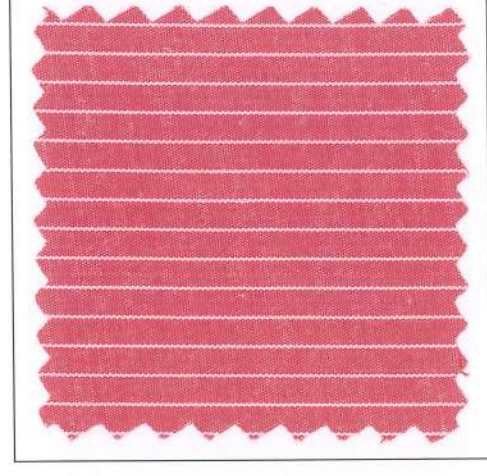
55



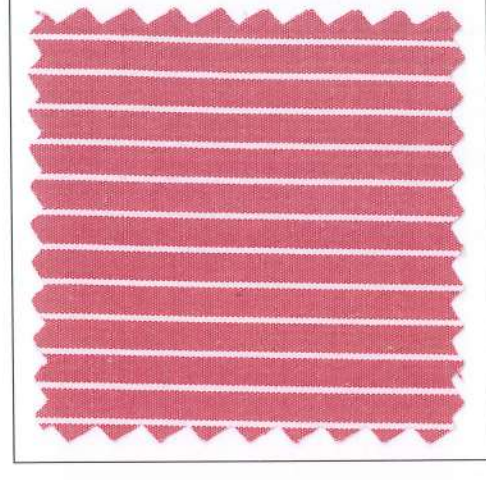
56



71

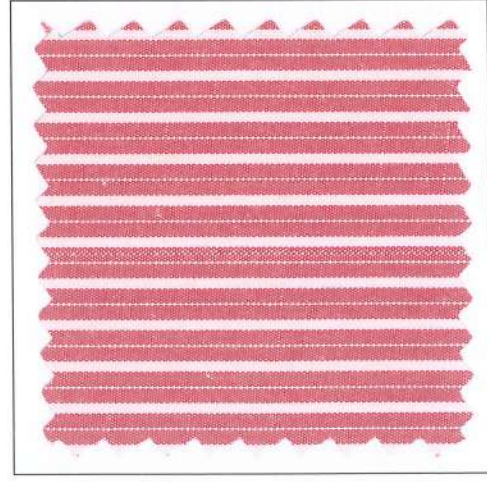


72



73

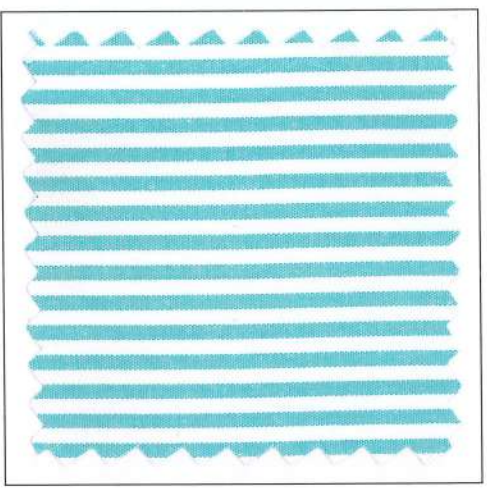
Super Stripes



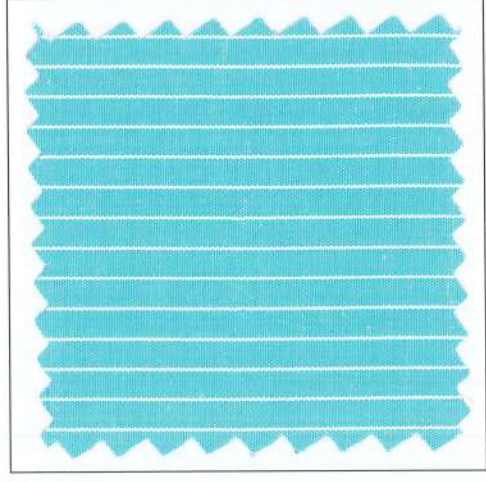
74



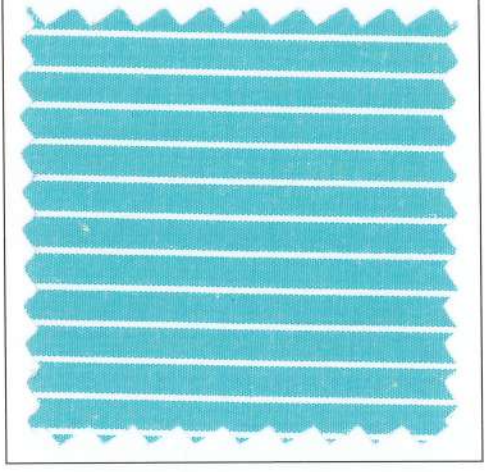
75



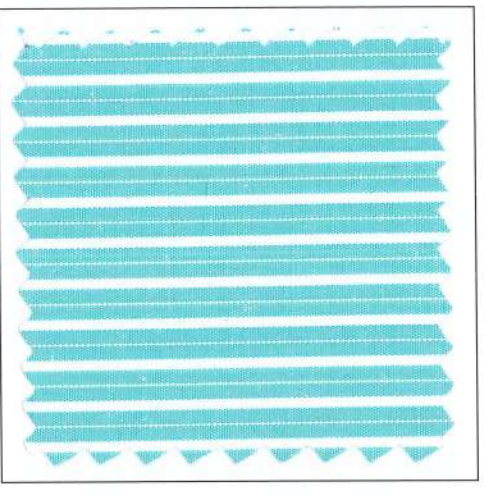
81



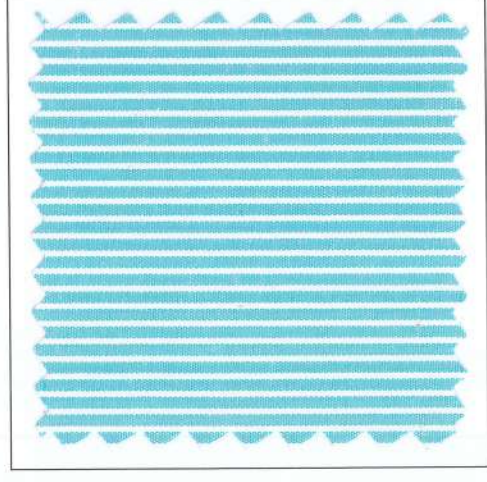
82



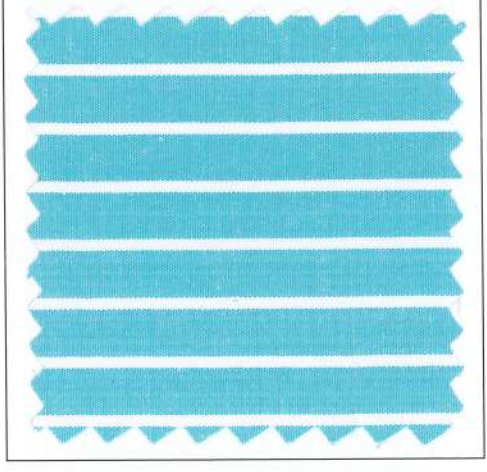
83



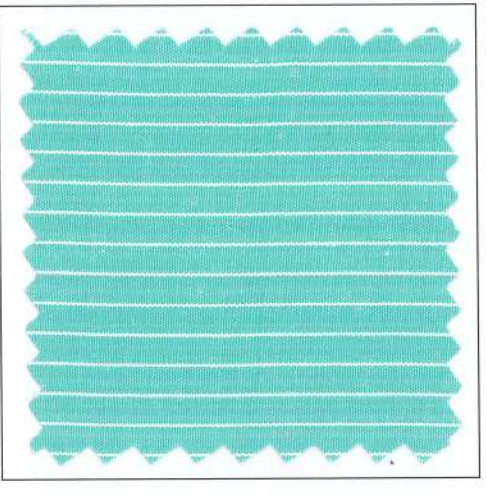
84



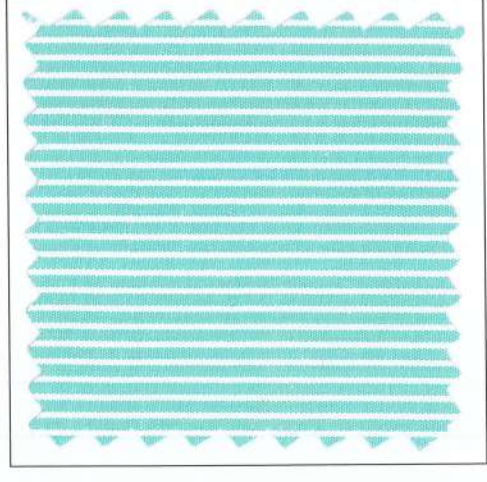
85



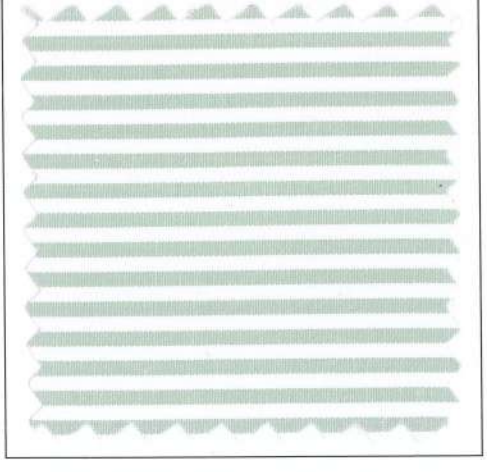
86



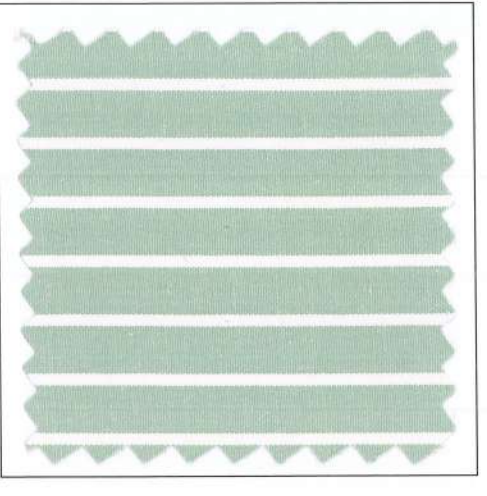
102



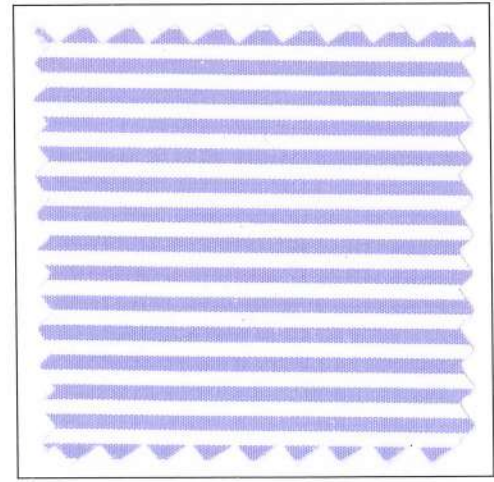
105



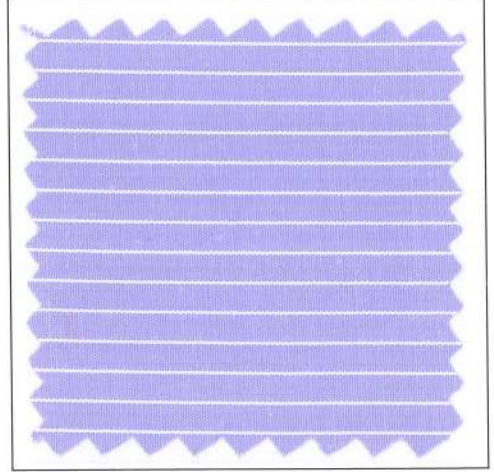
121



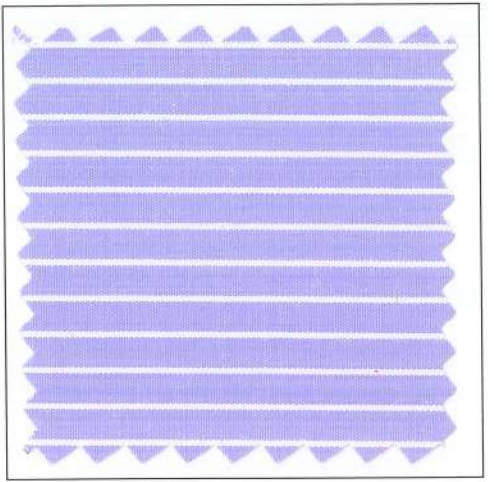
126



131



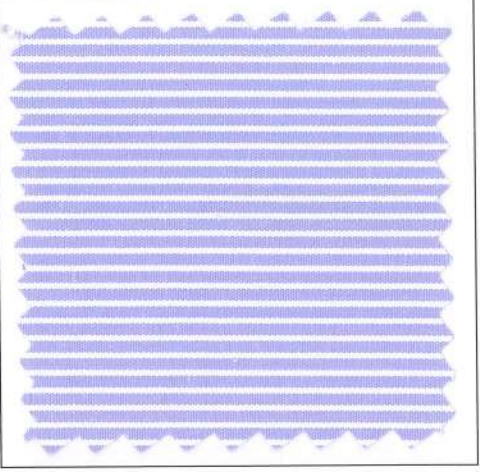
132



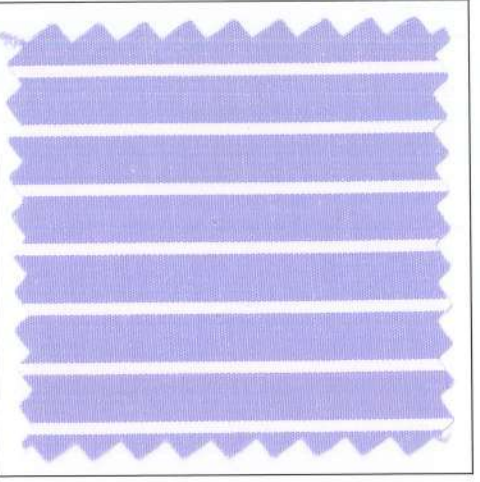
133



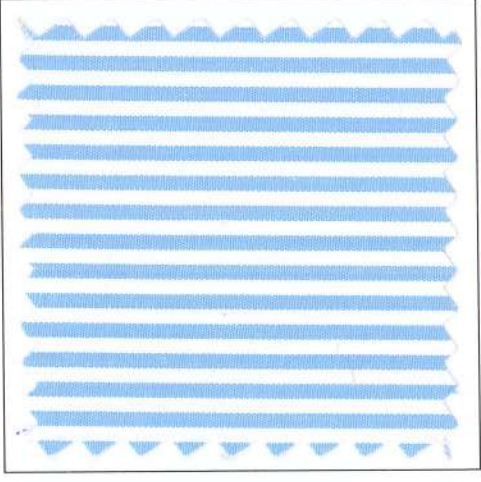
134



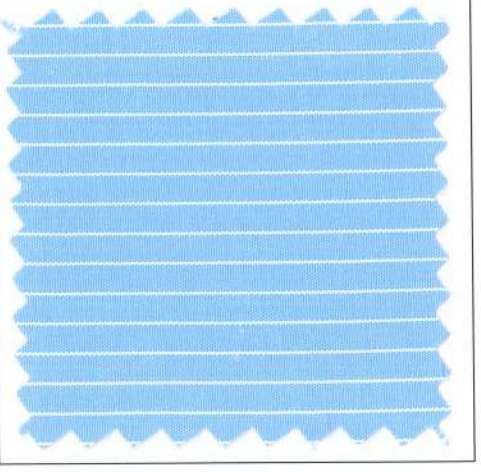
135



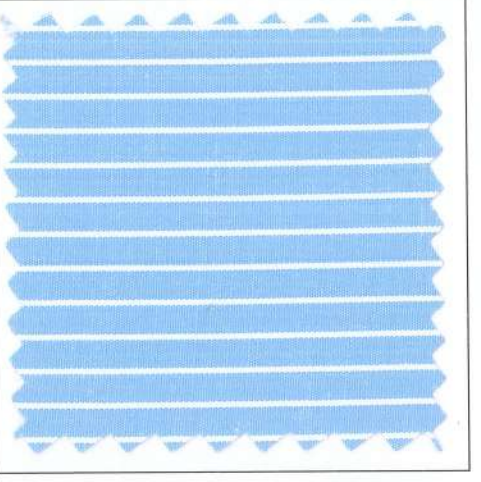
136



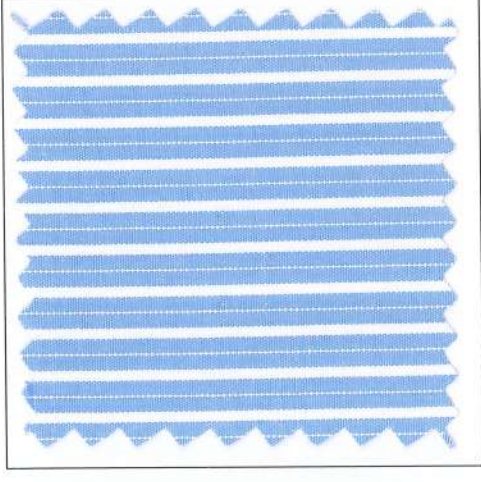
151



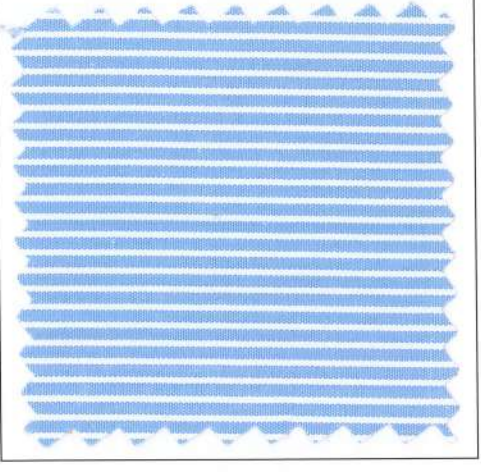
152



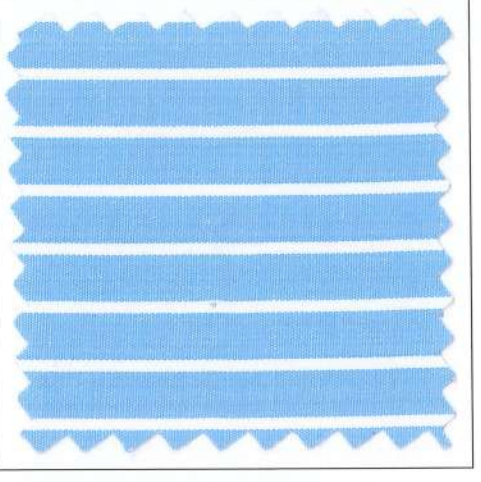
153



154



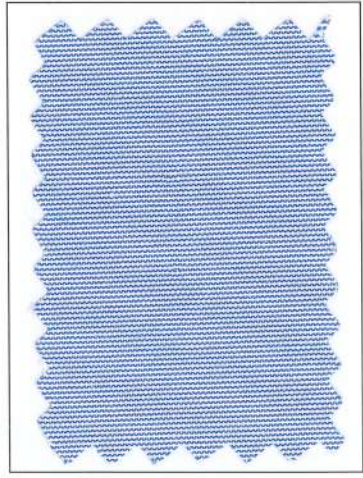
155



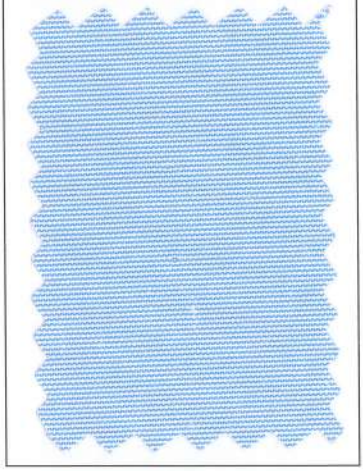
156



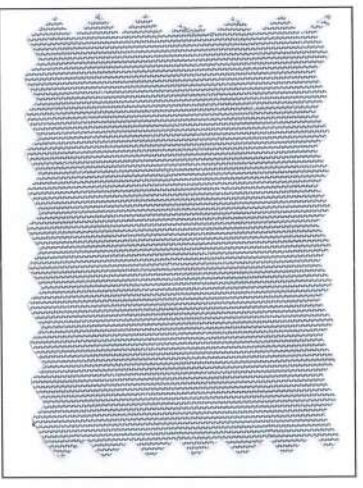
Super Stripes



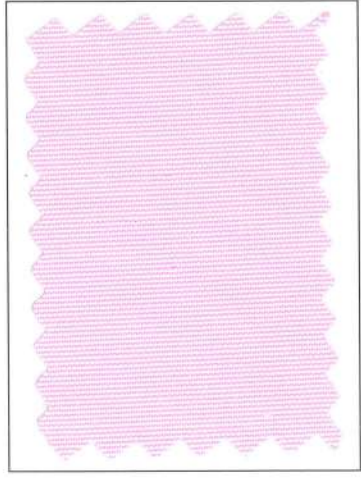
01



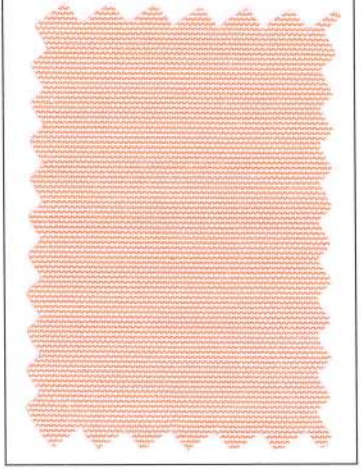
02



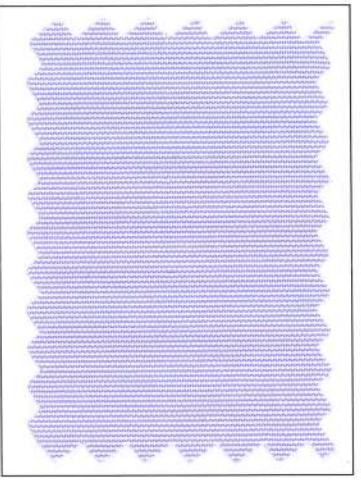
03



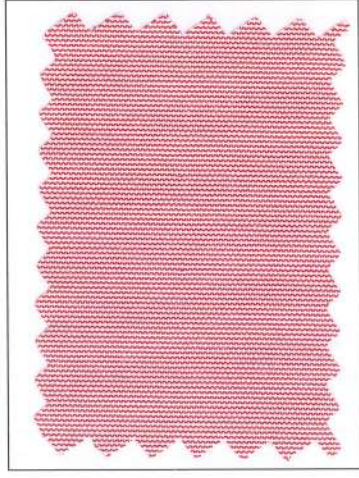
04



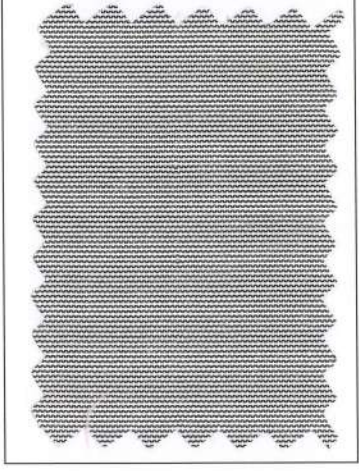
05



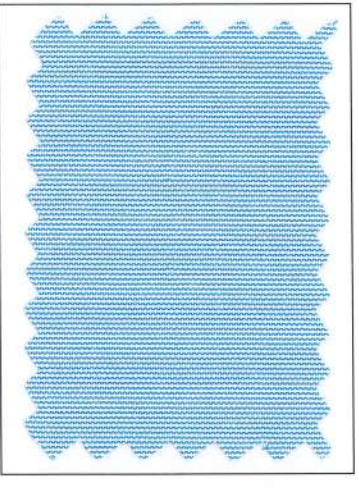
06



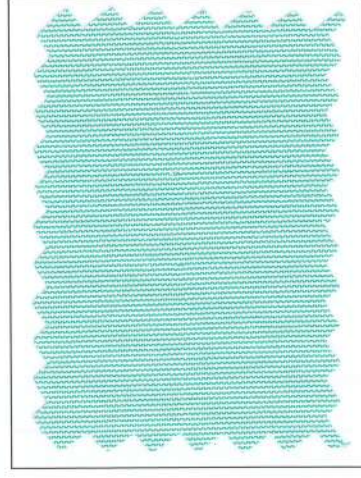
07



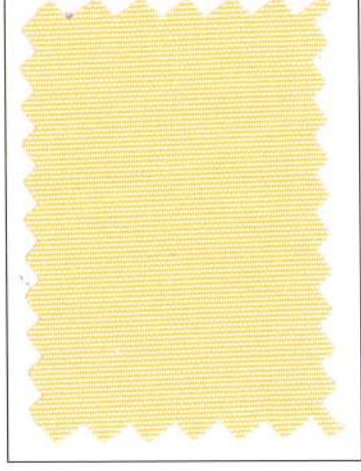
08



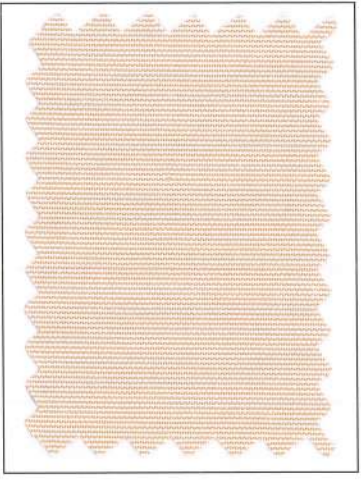
09



10



11



12



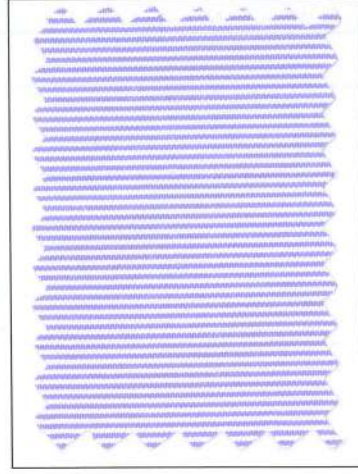
15



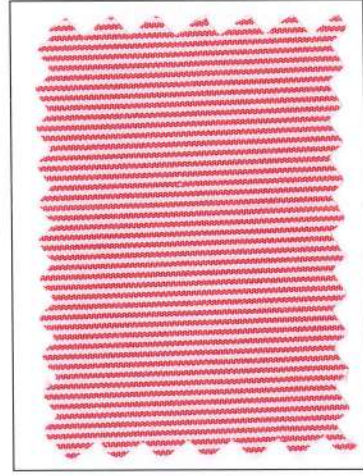
26



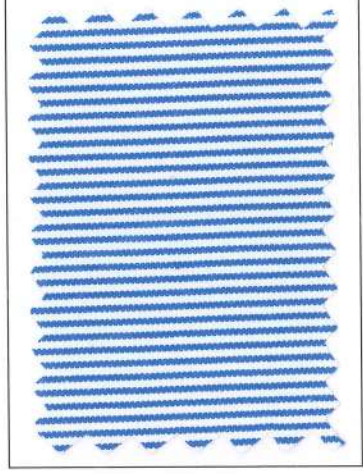
28



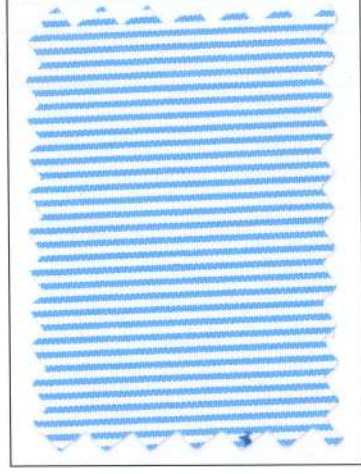
30



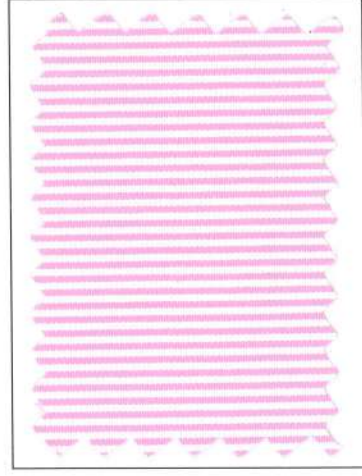
31



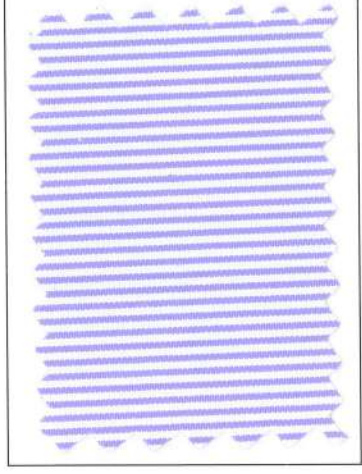
37



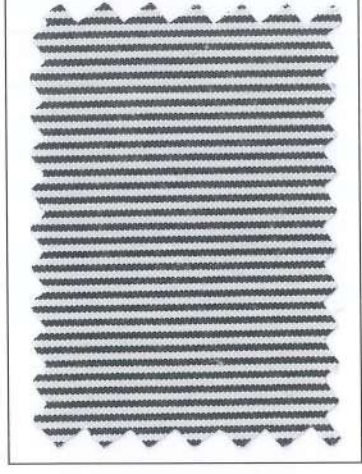
38



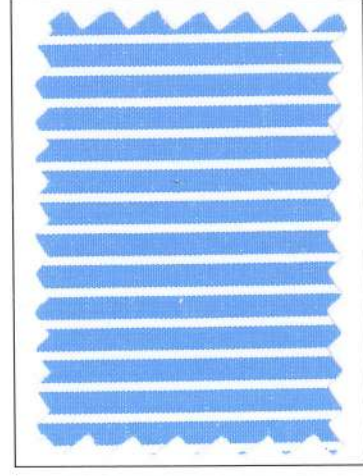
40



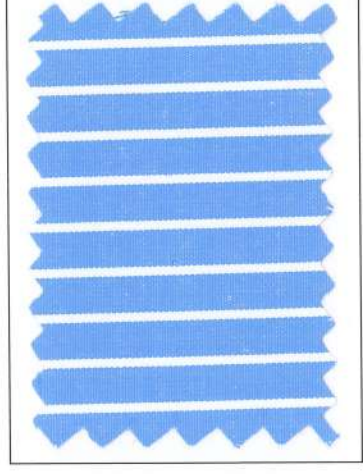
42



44



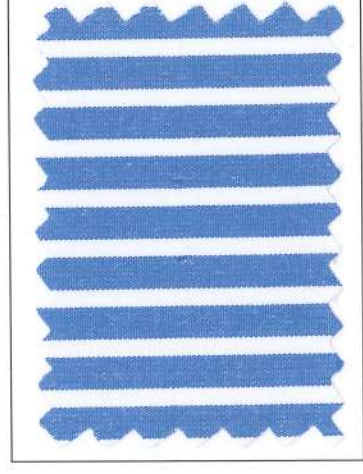
67



68



70



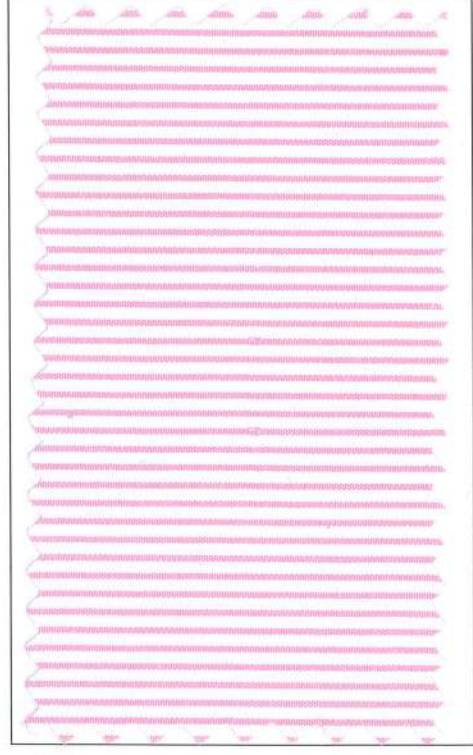
72

Super Stripes

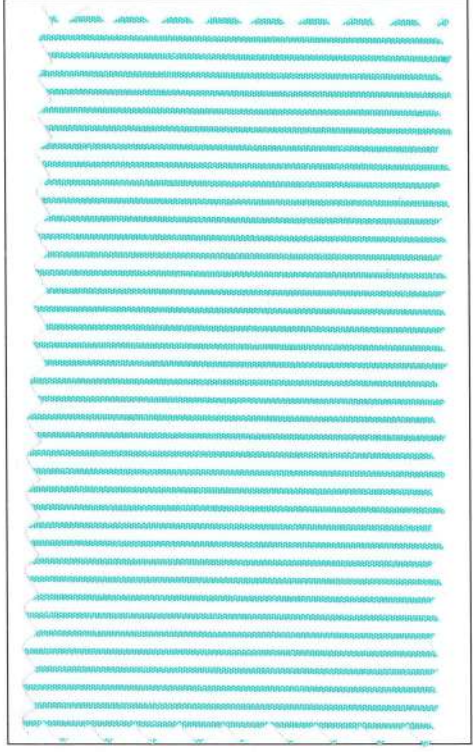
WHISTLE

MAFATLAL
1905

ARVIND MAFATLAL GROUP
The ethics of excellence



04



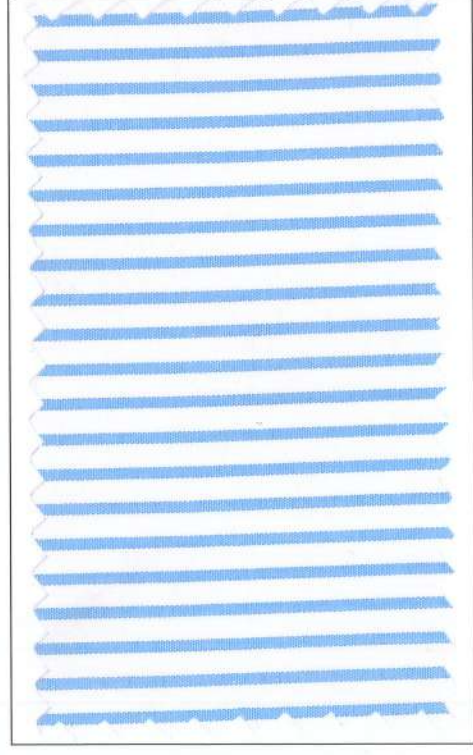
10



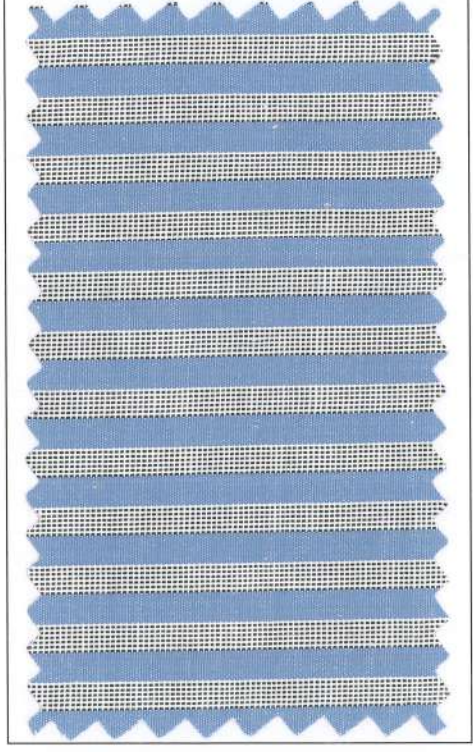
15



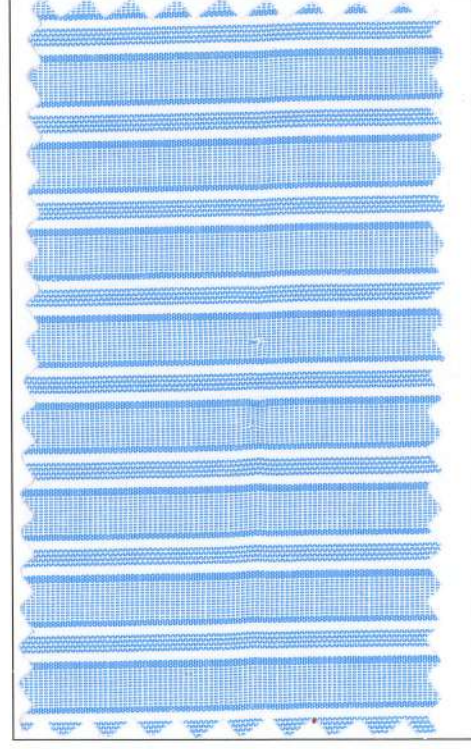
20



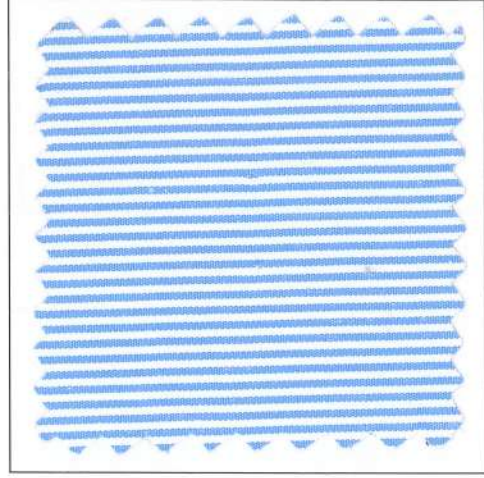
24



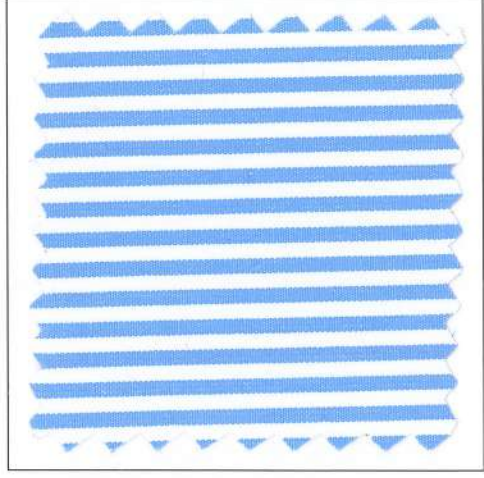
25



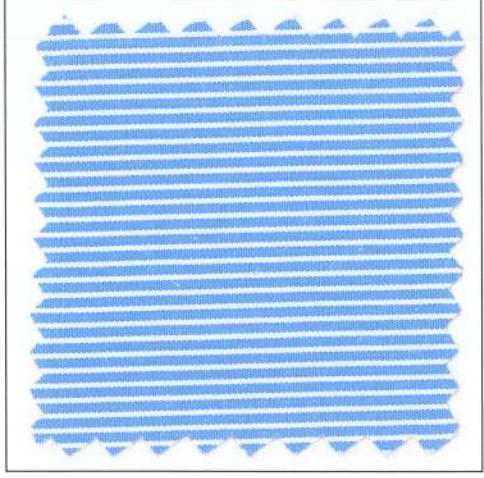
29



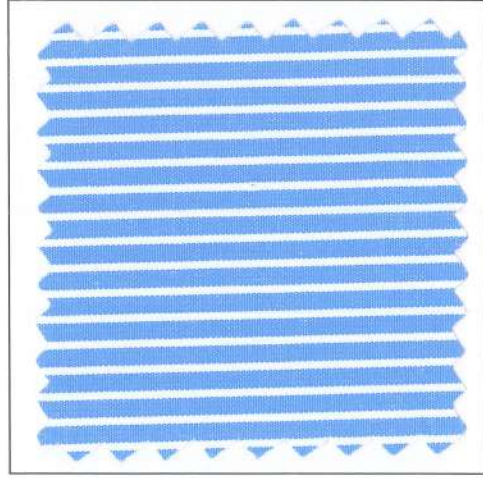
01



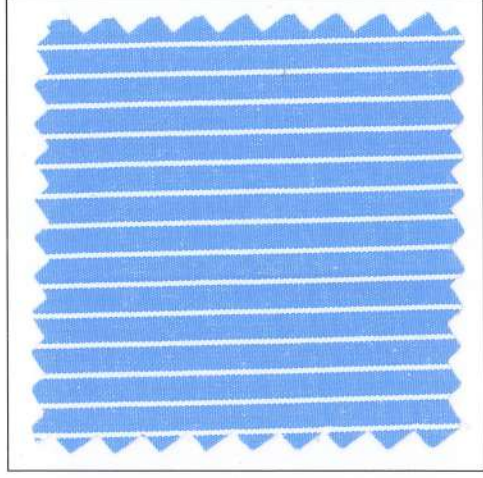
02



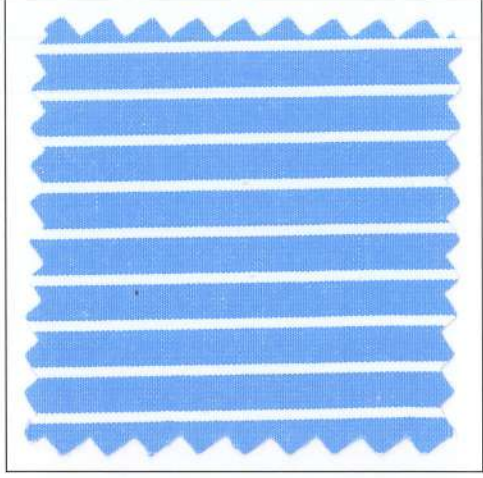
03



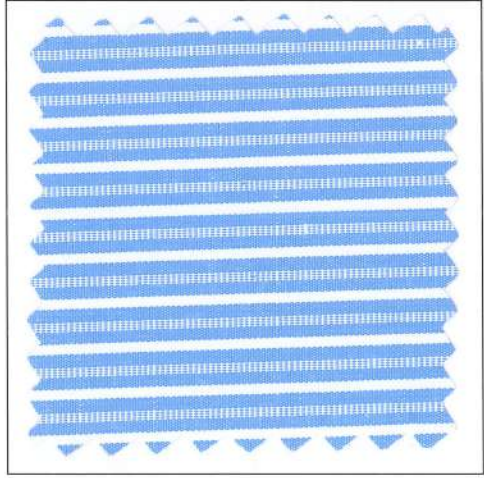
04



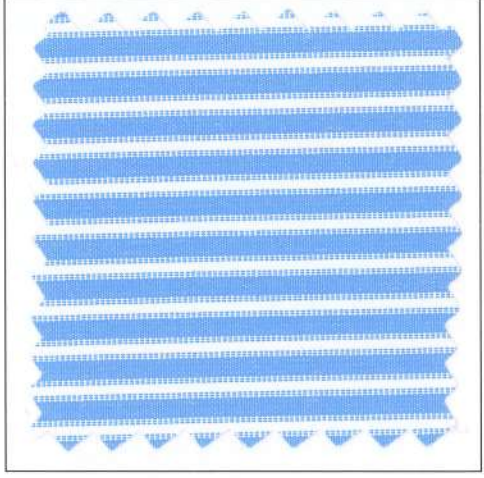
05



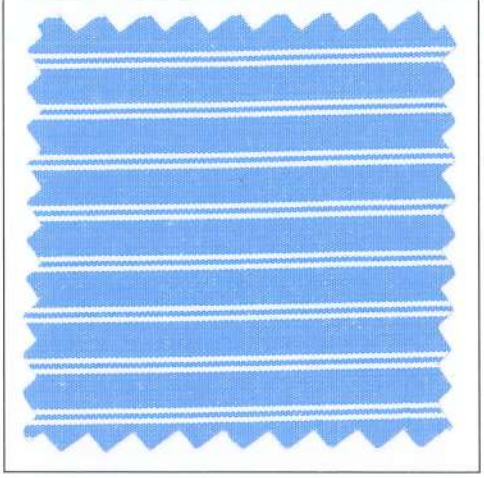
06



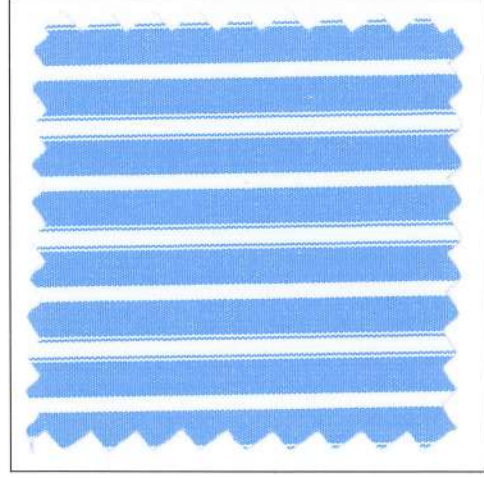
07



08



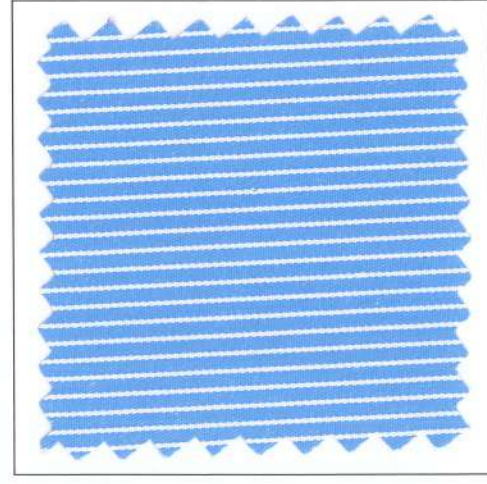
09



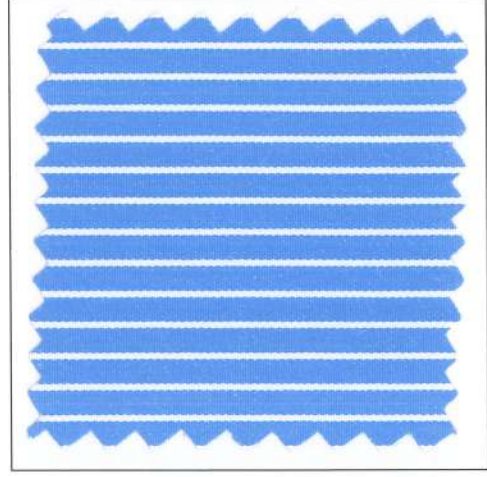
10

Super Stripes

GUITAR



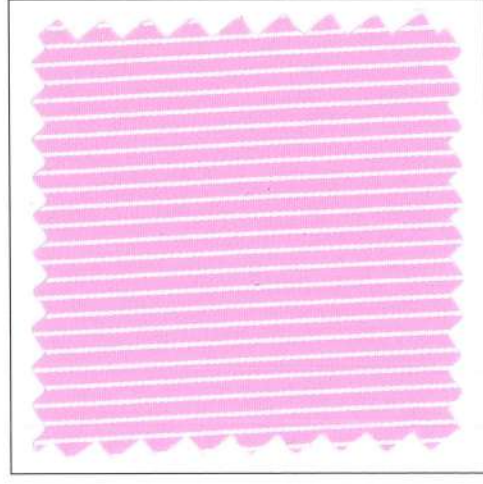
02



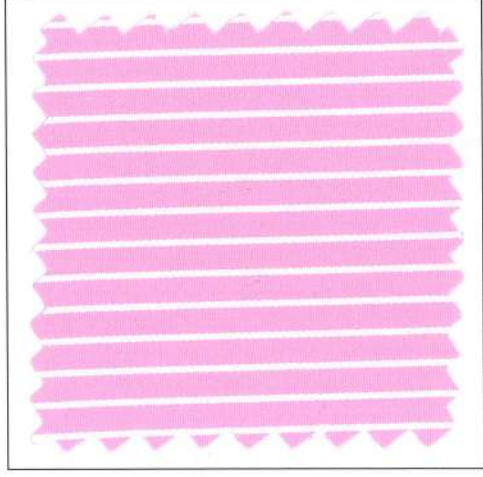
03



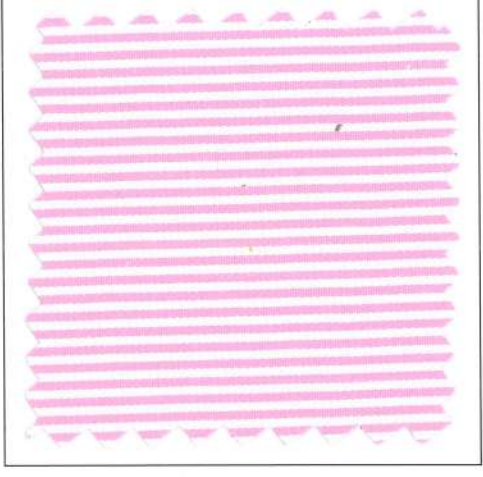
05



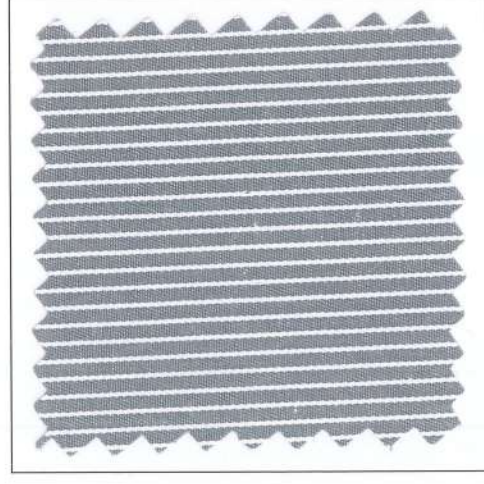
08



09



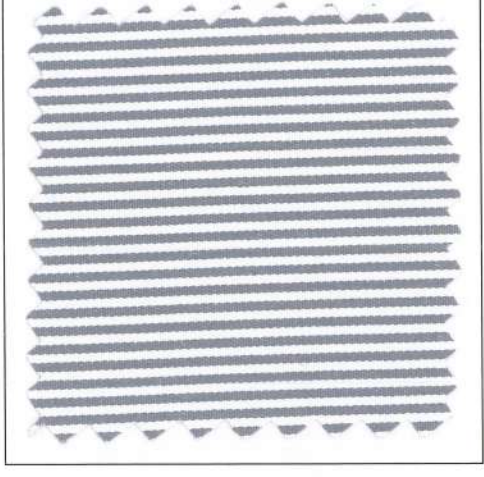
11



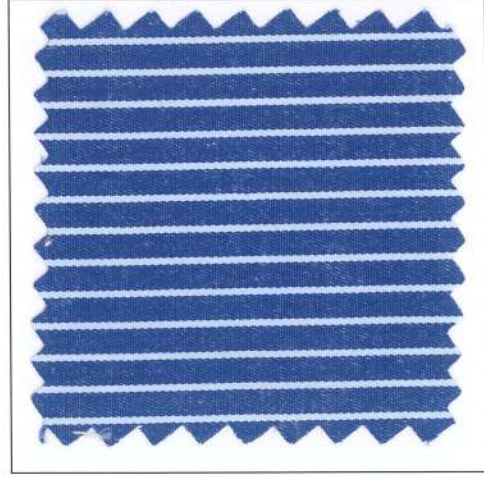
14



15



17



21



22



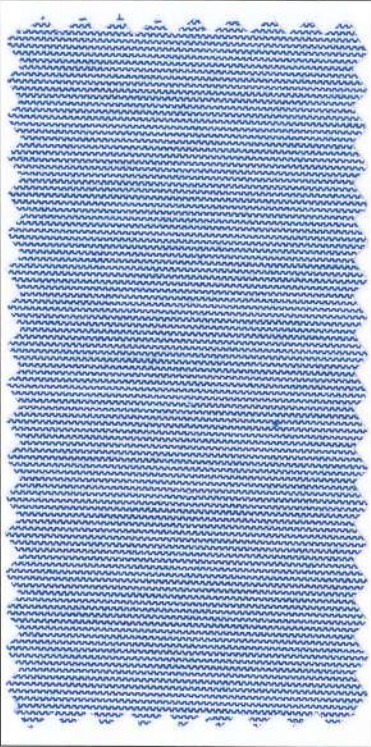
Super Stripes

OFFICER CHOICE

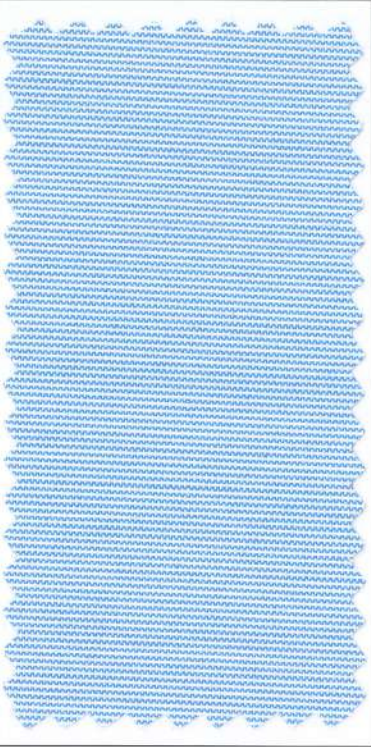


ARVIND MAFATAL GROUP
The ethics of excellence

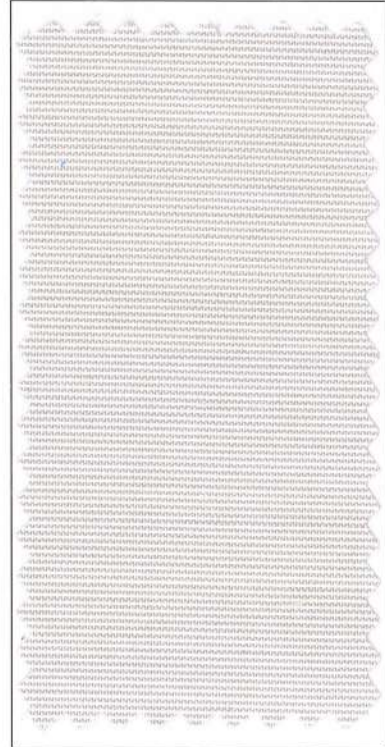
Mafatal



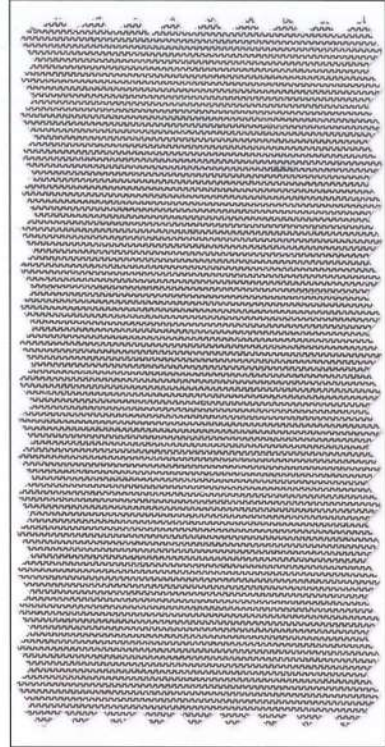
01



02



03



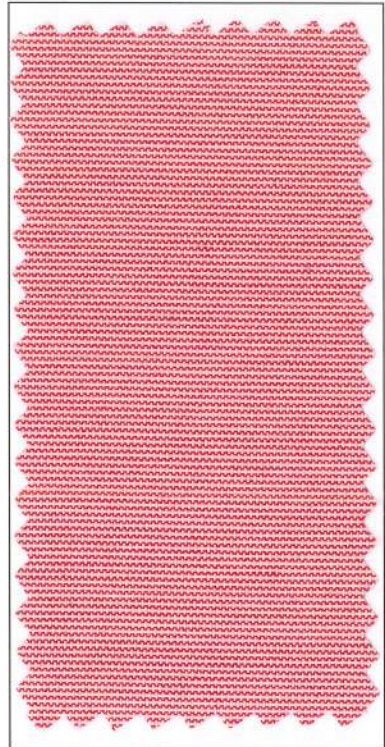
04



05



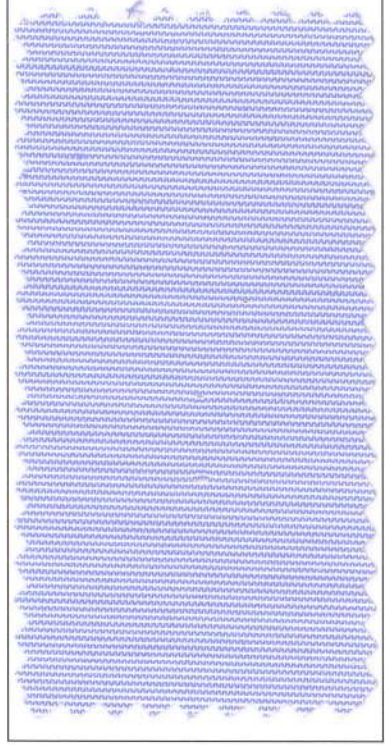
06



07



08



09



Super Stripes

BRISBANE

MAFATLAL
ARVIND MAFATLAL GROUP
The ethics of excellence



03



05



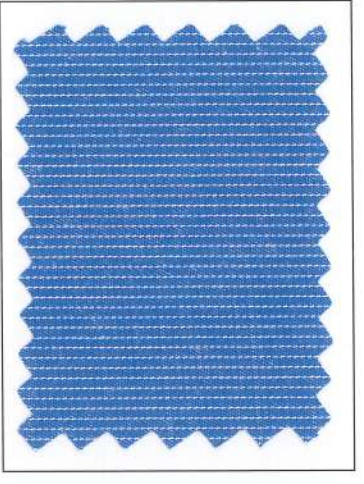
09



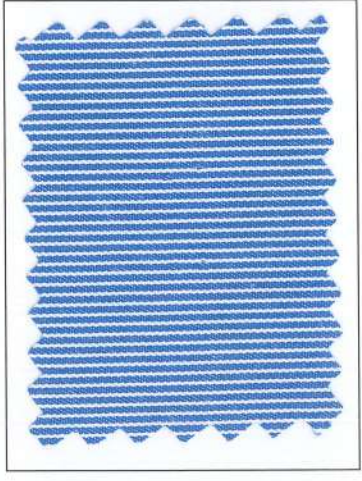
11



12



13



14



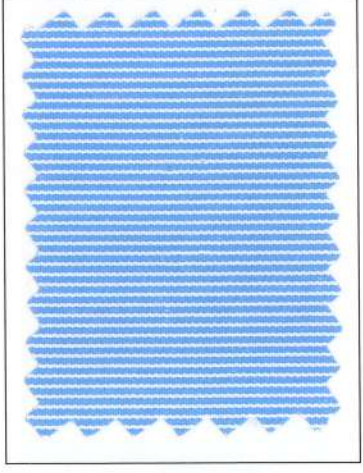
15



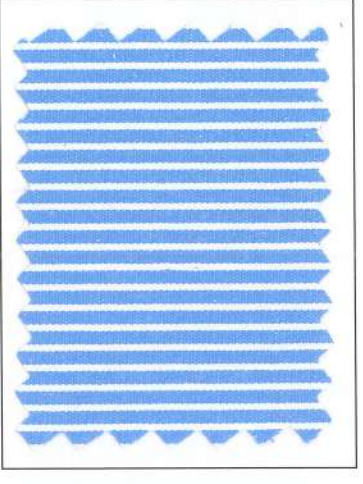
17



19



20



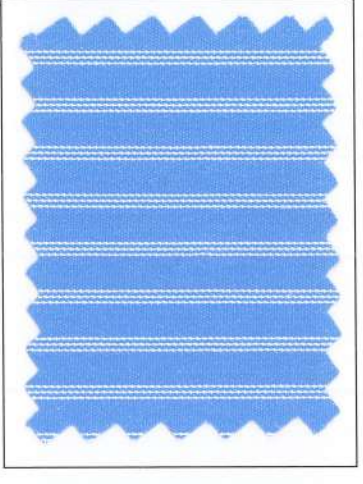
21



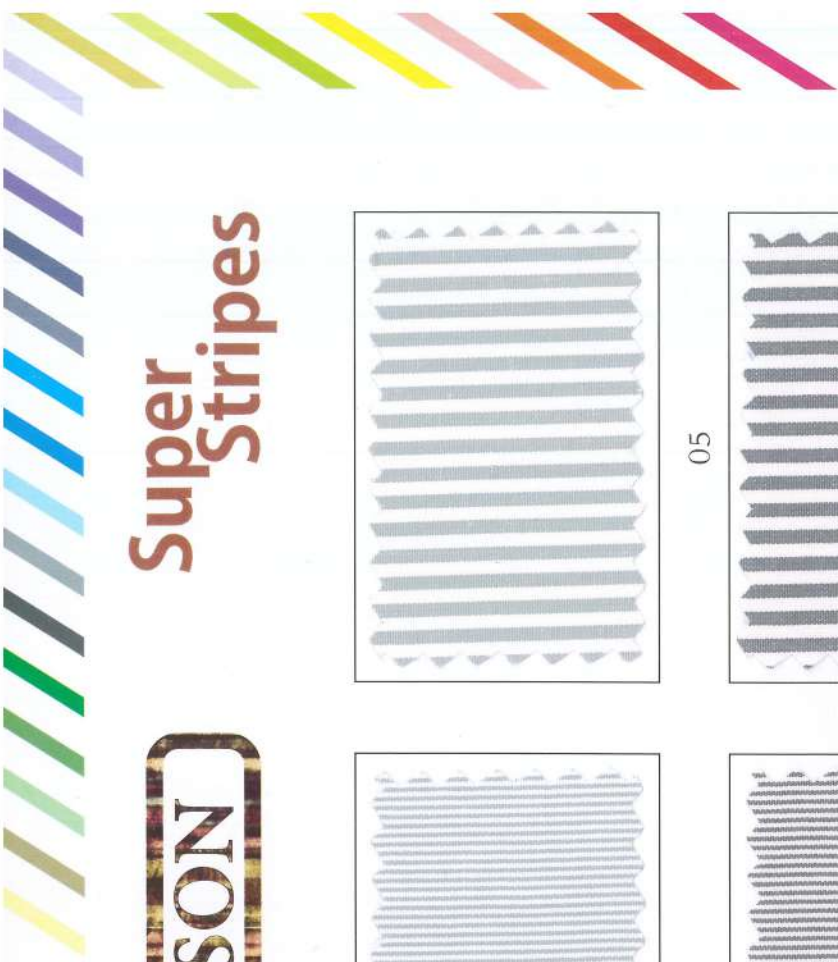
22



23



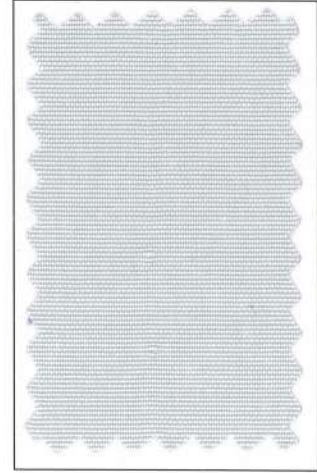
24



HUDSON

Super Stripes

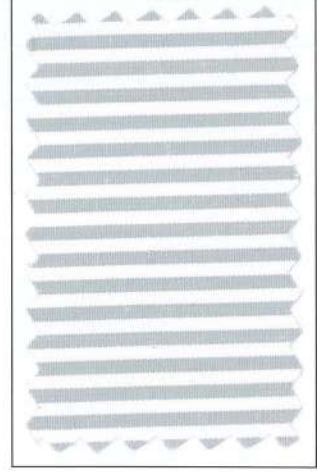
Mafatlal
1995
ARVIND MAFATLAL GROUP
The ethics of excellence



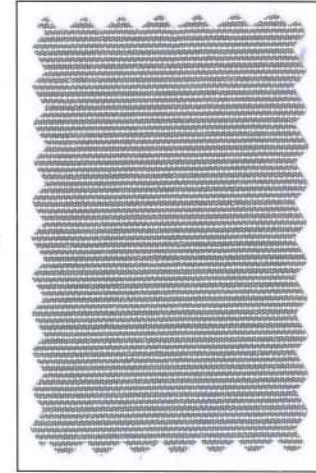
01



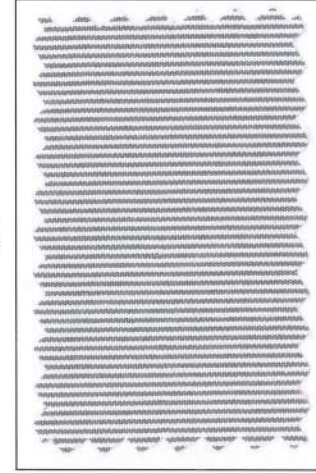
03



05



08



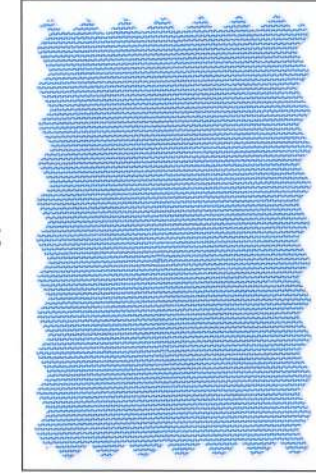
09



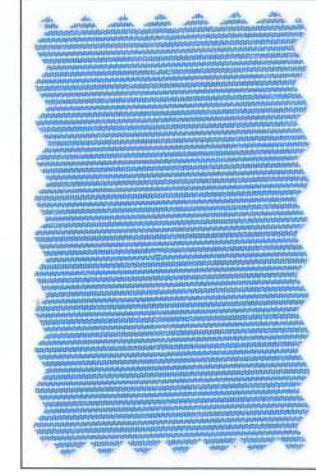
11



12



13



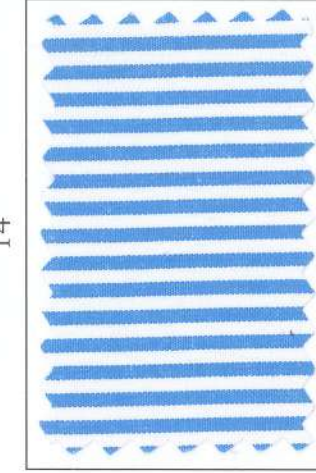
14



15



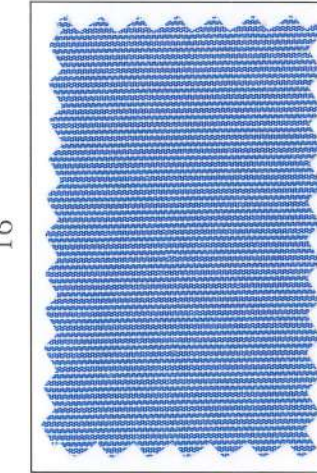
16



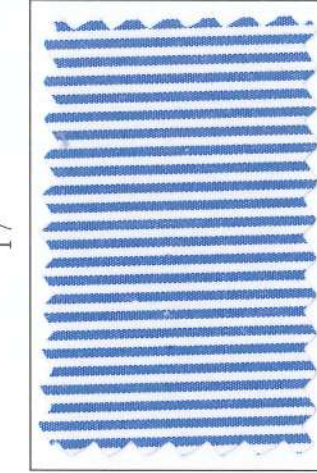
17



18



20



22



23



24



12

MZ MAFATLAL
ZEE FABRIC

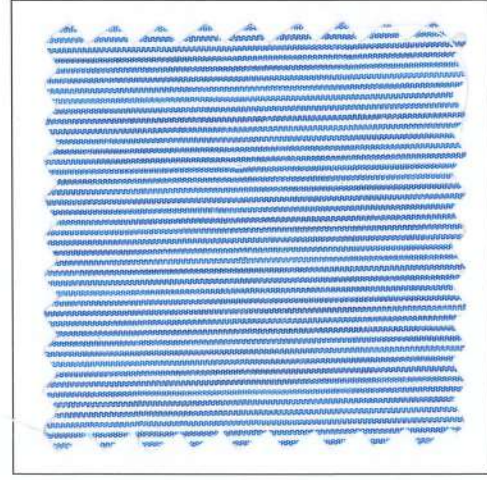
BOLT

**Super
Stripes**

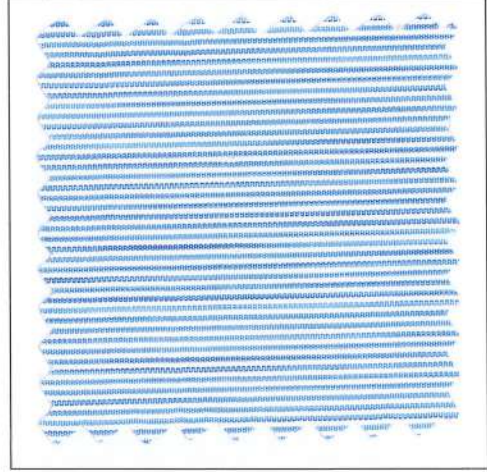


ARVIND MAFATAL GROUP
The ethics of excellence

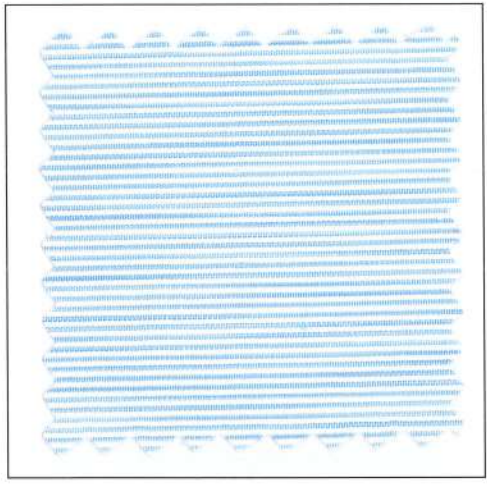
Mafatal
1975



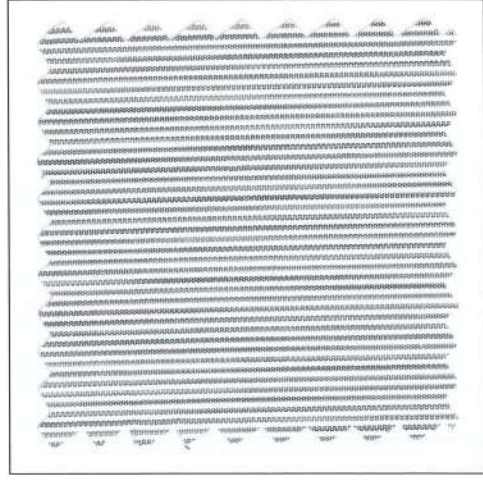
01



02



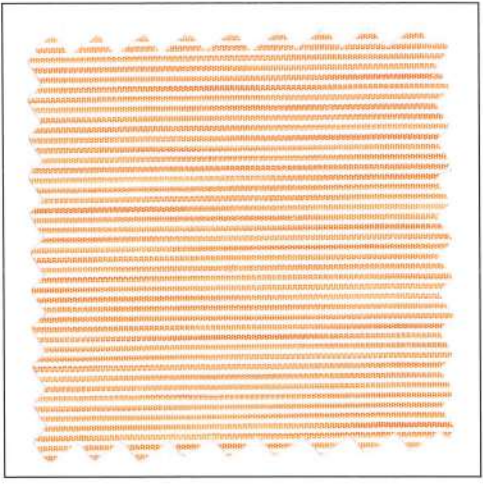
03



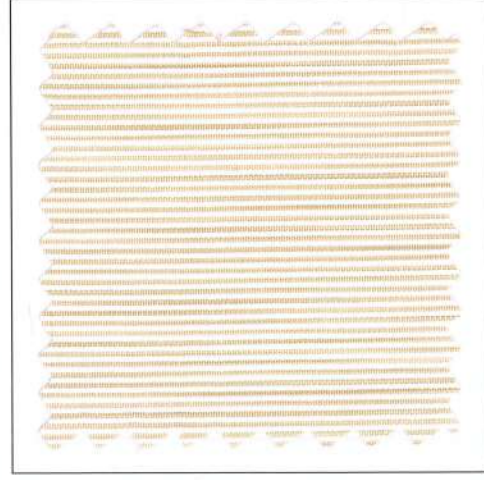
04



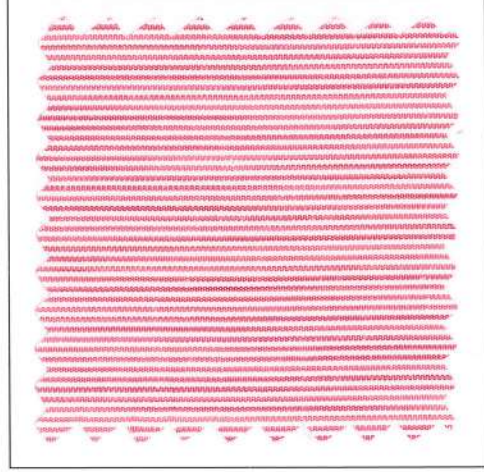
05



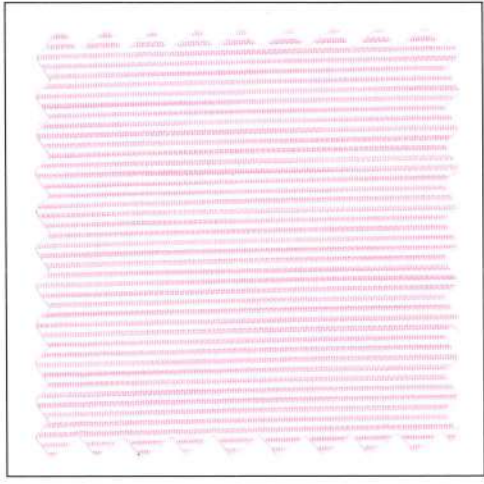
06



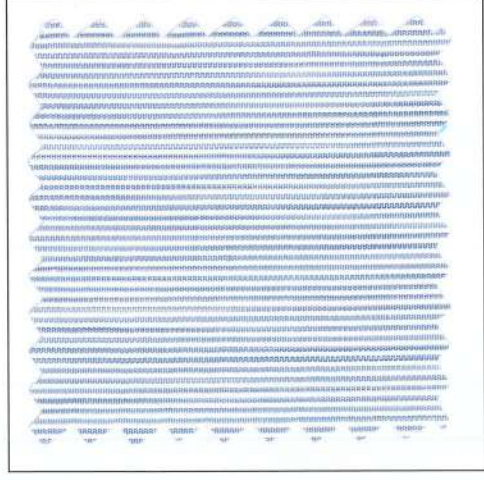
07



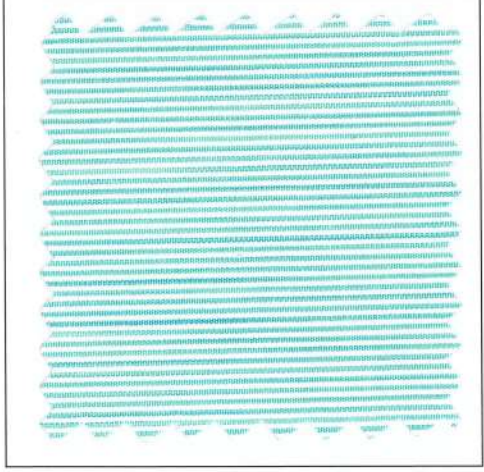
08



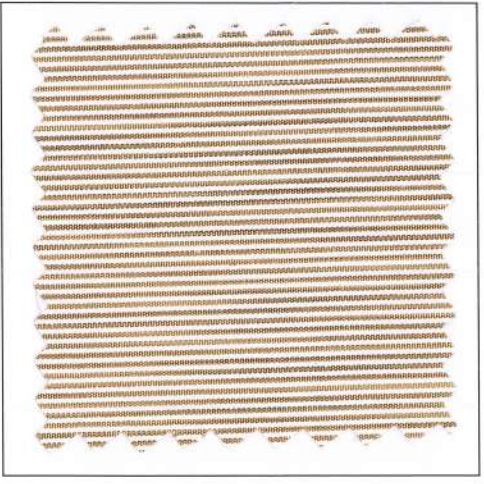
09



10



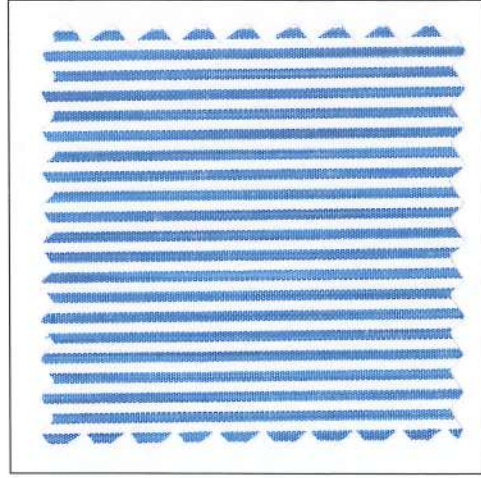
11



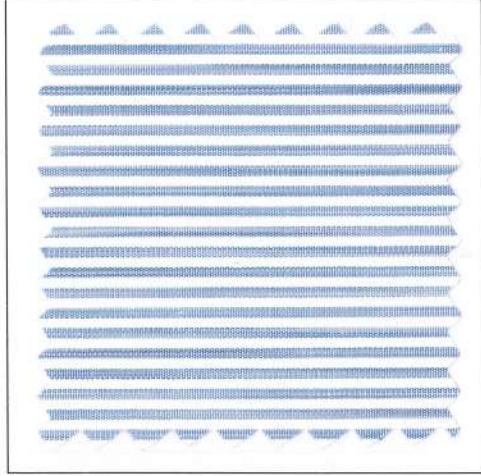
12

MZ MAFATAL
ZEE FABRIC

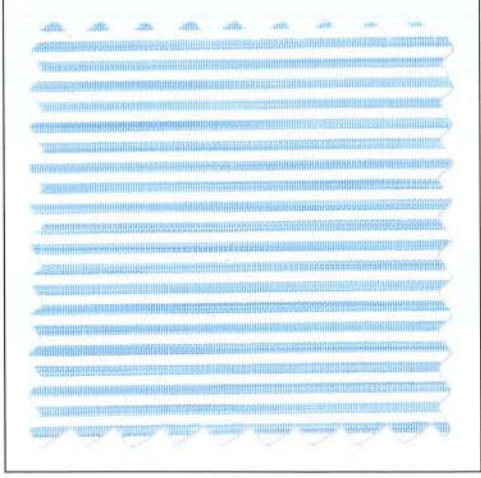
13



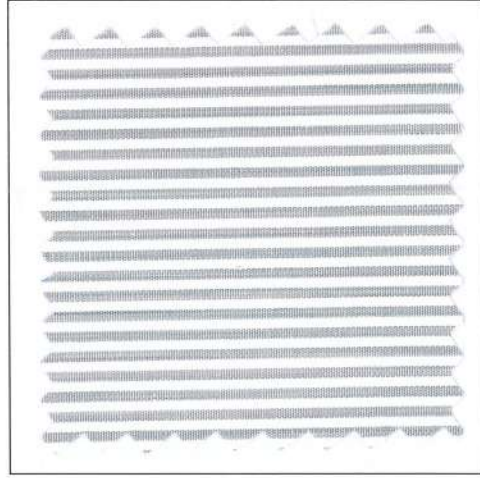
13



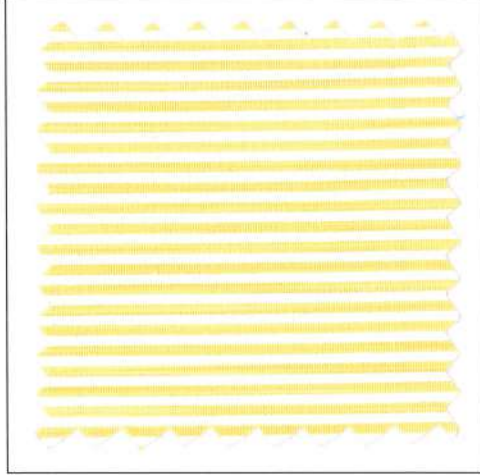
14



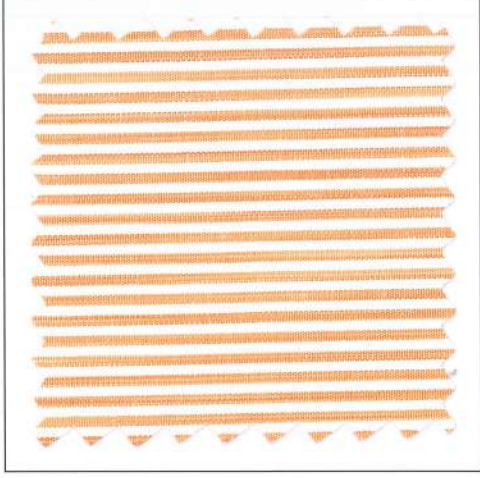
15



16



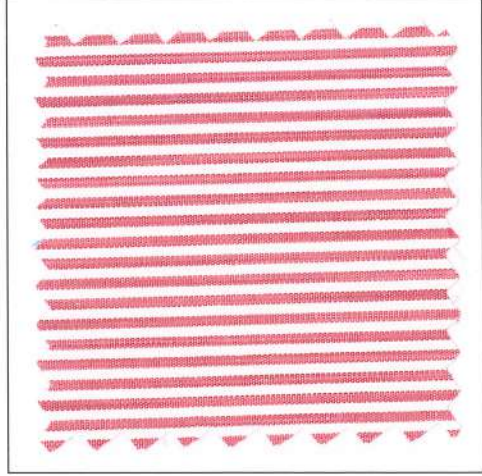
17



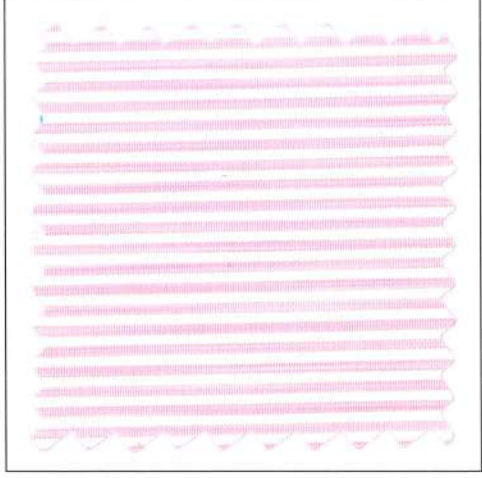
18



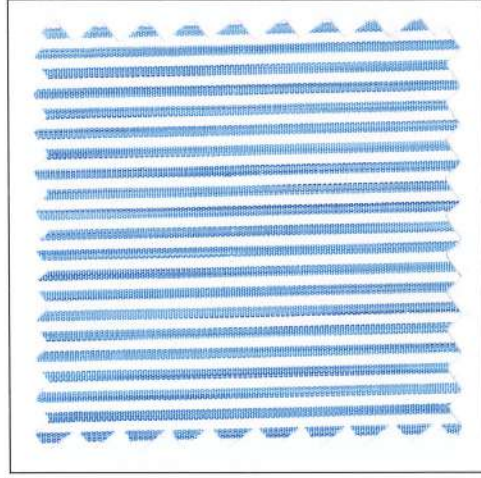
19



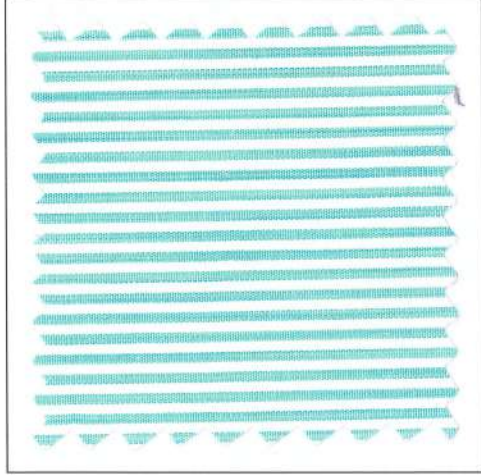
20



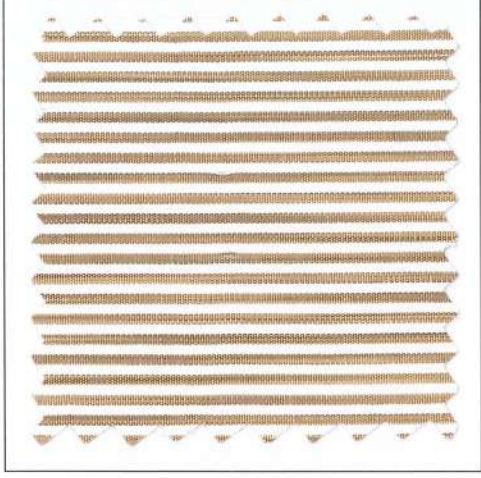
21



22



23

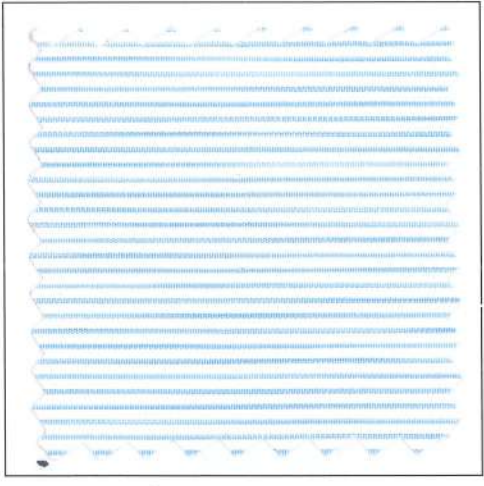


24

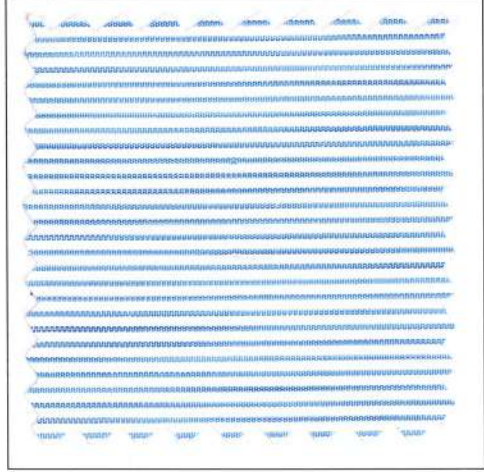
Super Stripes



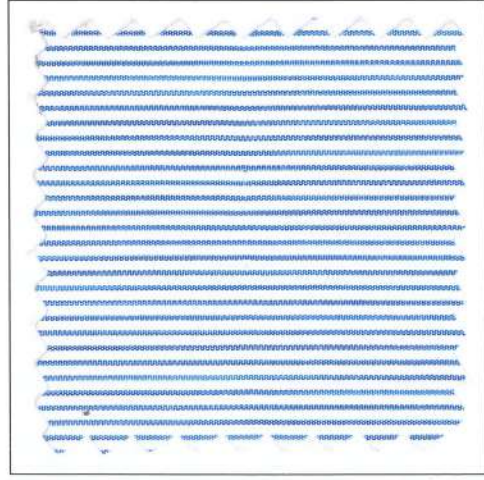
ARVIND MAFATAL GROUP
The ethics of excellence



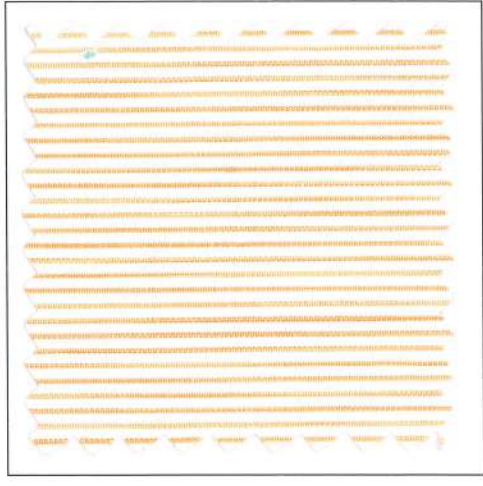
27



26



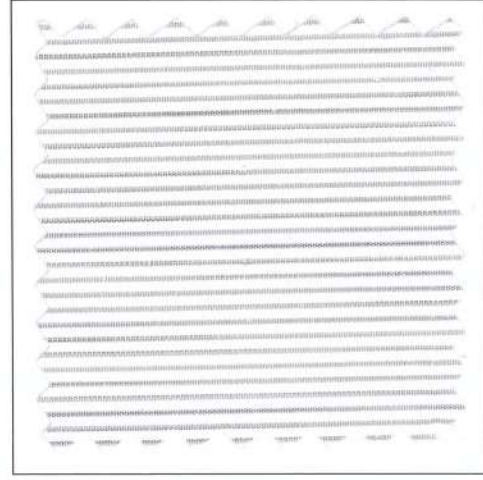
25



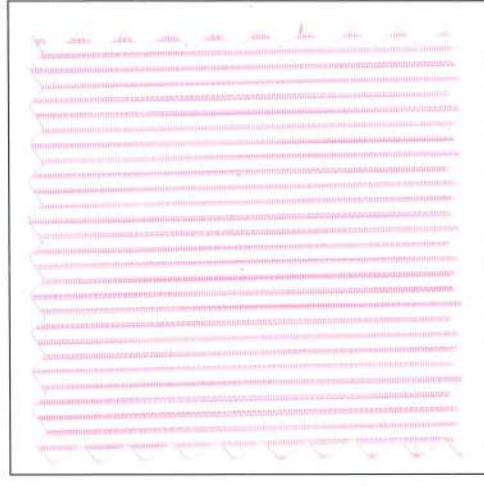
30



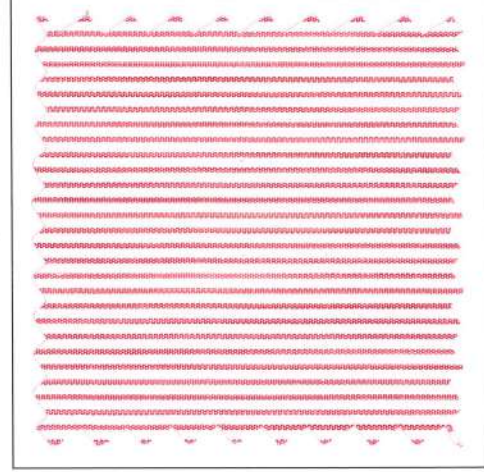
29



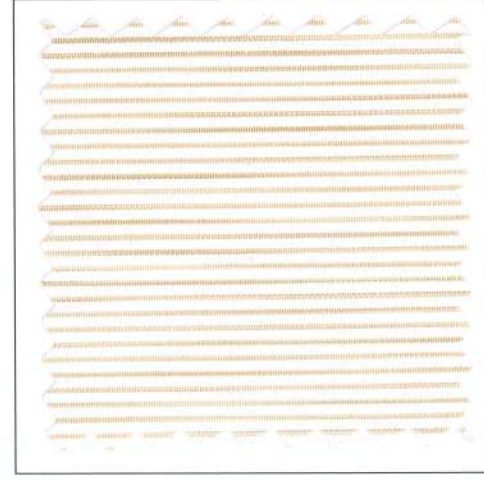
28



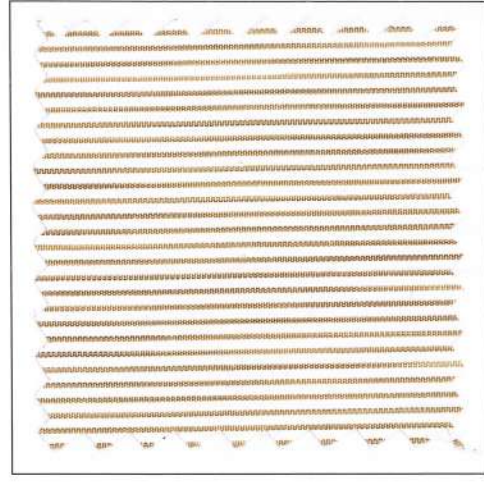
33



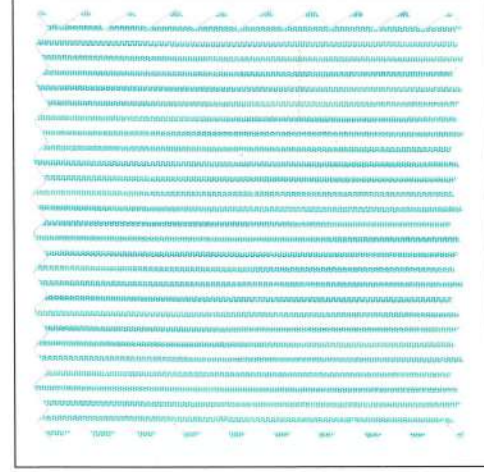
32



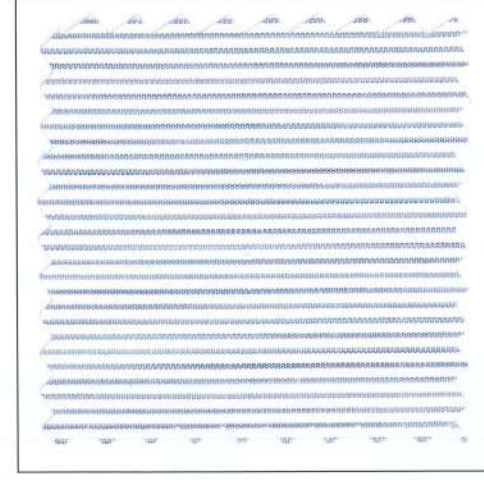
31



36



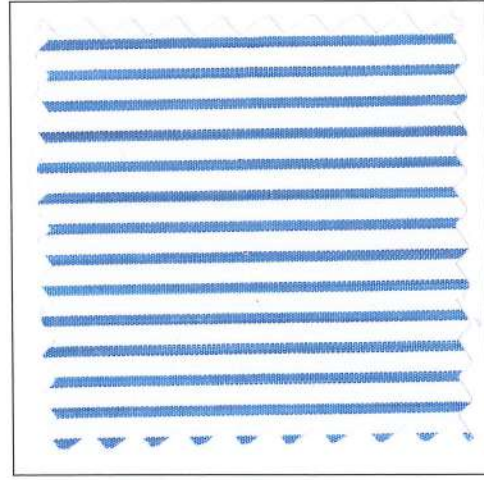
35



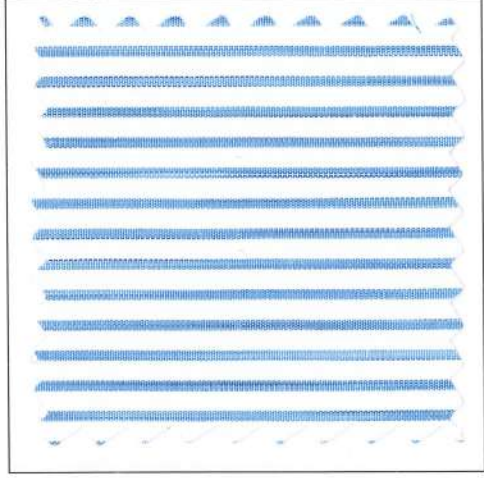
34



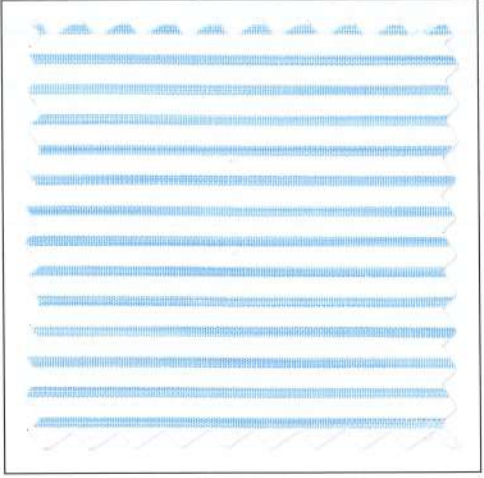
MZ MAFATAL ZEE FABRIC



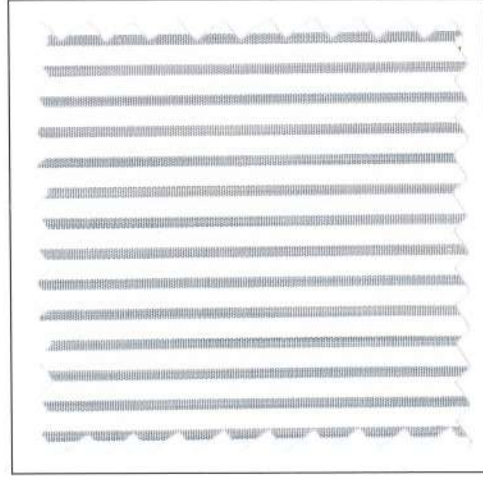
37



38



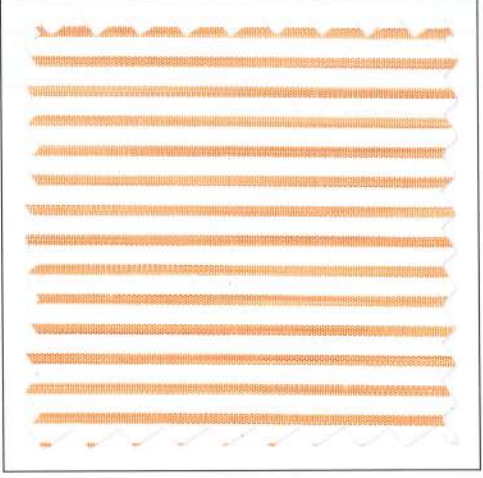
39



40



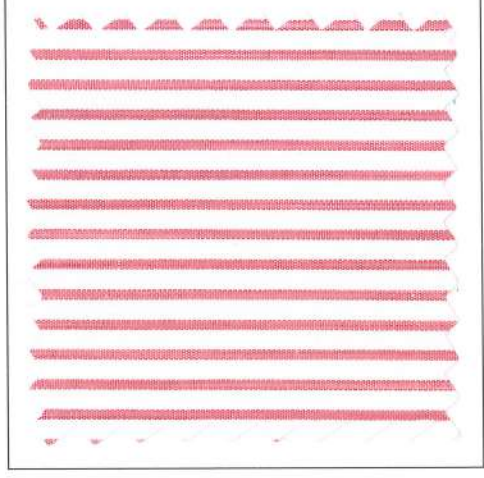
41



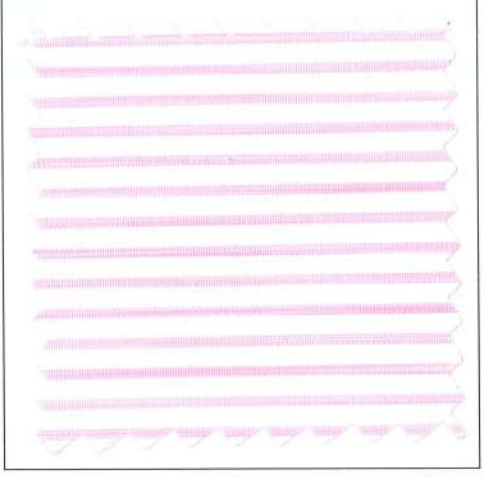
42



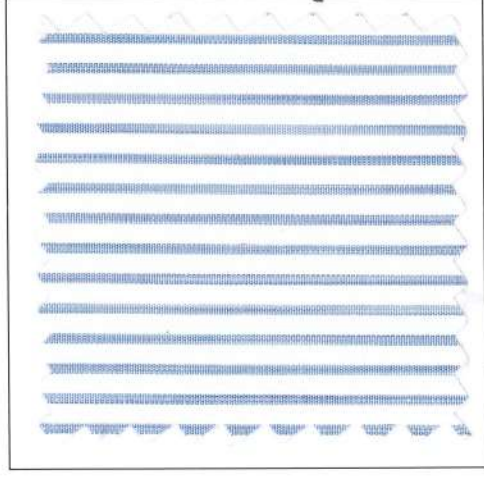
43



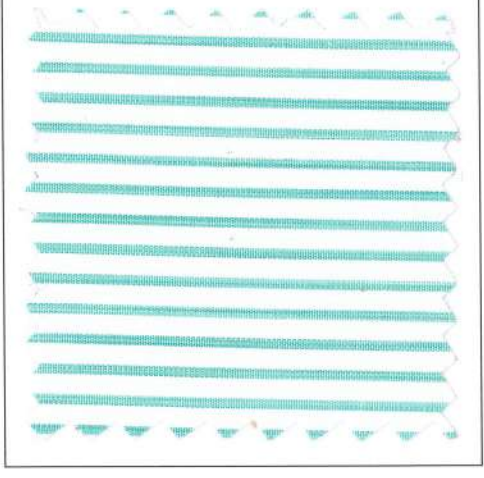
44



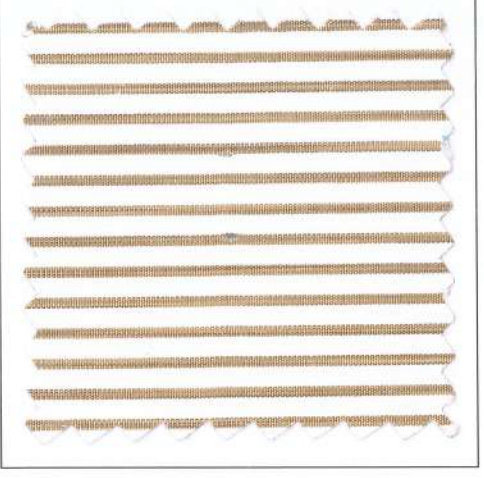
45



46



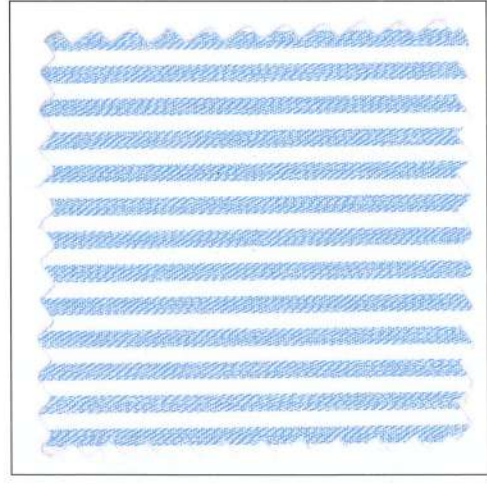
47



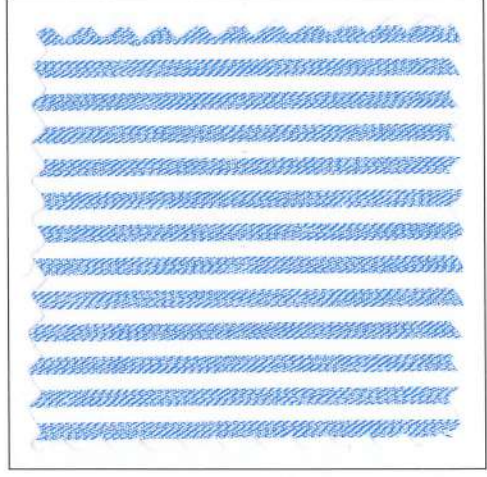
48

Super Stripes

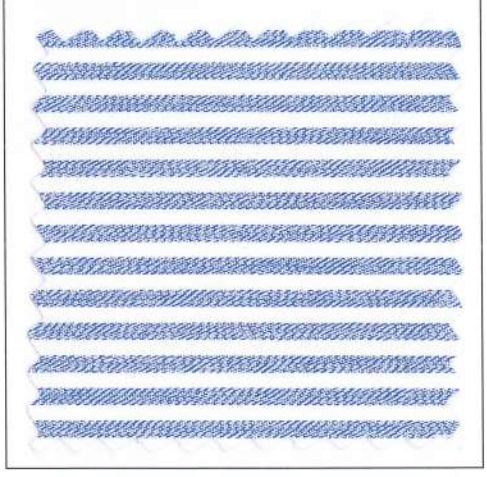
BLAZE



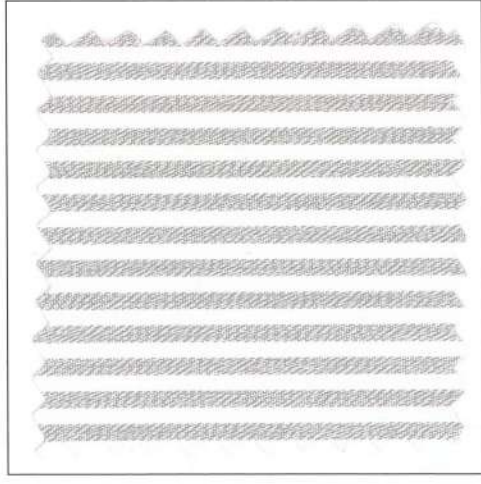
01



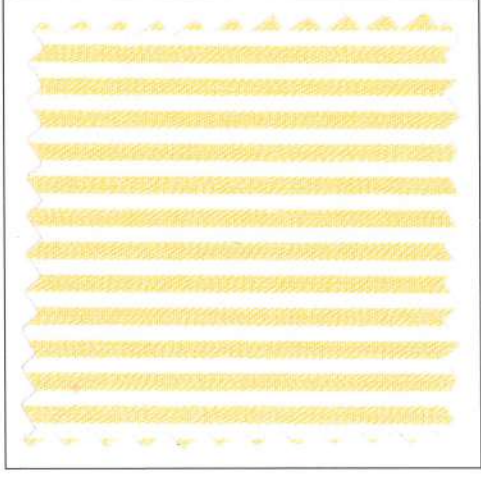
02



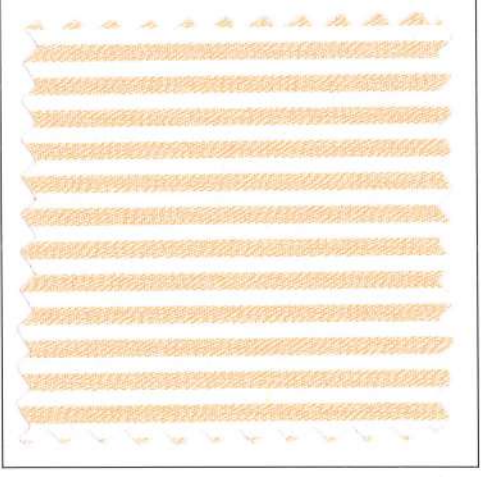
03



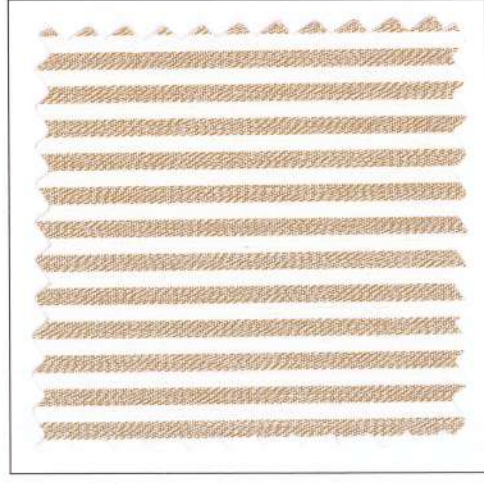
04



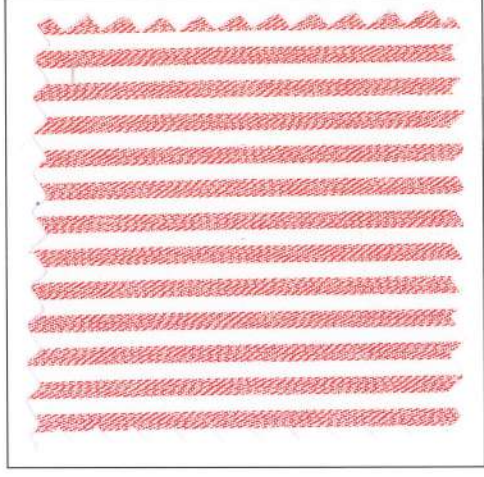
05



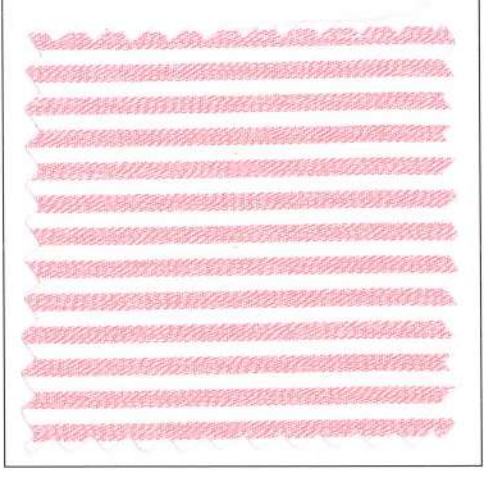
06



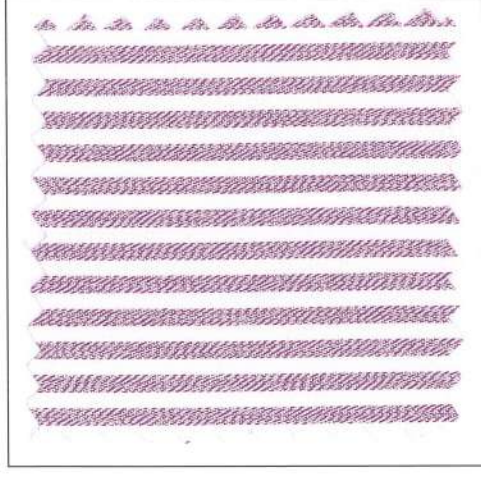
07



08



09



10

01

02

03

04

05

06

07

08

09

10

01

02

03

04

05

06

07

08

09

10

01

02

03

04

05

06

07

08

09

10

04

05

06

07

08

09

10

04

05

06

07

08

09

10

07

08

09

10

07

08

09

10

10



ARVIND MAFATLAL GROUP
The ethics of excellence



33/A, Lotus House, Unit No. 7 & 8, Sir Vithaldas Thackersey Marg,
New Marine Lines, Mumbai - 400020.