

SINCE
1905

Mafatlal[®]



COMBINATIONS



MAFATLAL[®]



MAFATLAL
ZEE FABRIC



MAFATLAL INDUSTRIES LIMITED

THE COMPANY

The philosophy of Mafatlal Industries Limited rests firmly in traditional value and modern technology. The flagship company of the Arvind Mafatlal Group, Mafatlal Industries Ltd. has been a leader in the textile industry for over 100 years. Equipped with world-class technology, the Company's manufacturing units in Navsari and Nandid have the capacity to produce various kinds of premium fabrics.

PRODUCTS

MIL's product portfolio comprises a complete range of products consisting of Yarn-dyed Shirtings, Suitings, Voiles Prints, Linens, Bleached White Fabrics, Rubia, Value-added and Fashion Denims, Bottom Weights, Corduroys, School Uniforms, Corporate / Institutional Uniforms, Bed & Bath Linen and Readymades, Mafatlal Industries Ltd. manufactures Fabrics in Cotton, Linen and Blends like Polyester / Cotton, Polyester / Viscose, Cotton / Lycra, PV/Lycra, Terry Rayon & Polyester / Wool.

SCHOOL UNIFORM

Mafatlal has brought about a revolutionary change in the uniform segment by developing a 600 colour combo co-ordinate booklets for shirt, trouser and skirt combination for retailers, school uniform makers/converters, which will give them a wide range of designs to choose from. This makes it convenient and easy to decide on the right combination. All our high quality yarn dyed school uniform fabrics are available in more than 5000 designs in checks, stripes, twill checks and plains. We are the first company to introduce eco-friendly fibre-dyed suiting in the school uniform range. Fibre dyed suiting have the advantage of higher colour depth and retention. We offer over 60 shades in the fibre-dyed suitings range.

UNIFORM FOR DEFENCE AND ARMED FORECES

Uniforms are supposed to instill pride in individuals about their organisations. Mafatlals does this and more by supplying quality fabrics and readymade for various organization including Defence establishment, Armed forces Police departments and Central as well as state gorments establishments .With a customer base of over 1000 reputed organization , Mafatlal Industries is the undisputed leader in Corporates/Institutional uniform fabric busniess.

UNIFORM FOR CORPORATE AND RETAILERS

Increasingly , the corporate sector is paying a lot of attention to the way their employees are attired ,espacially in service sector like airlines,retail,hospitality,etc. With design playing a crucial role , our in-house team of designer offer their assistance in design selection and we undertake orders for readymade uniforms.



FAIR TRADE

OUR TRADE VALUE IS BASED ON ETHICS OF VALUE SUCH AS TRANSPARENCY, ACCOUNTABILITY, FAIR TRADING PRACTICE, NO CHILD LABOUR OR FORCED LABOUR IN OUR COMPANY ENSURING GOOD WORKING CONDITION, PROVIDING CAPACITY BUILDING, RESPECT FOR ENVIRONMENT. OUR VALUE STAND STRONG ON OUR GIVEN PRINCIPLE.

SUSTAINABLE DEVELOPMENT

MAFATLAL MEETS THE NEED OF THE PRESENT TEXTILE WORLD WITHOUT COMPROMISING THE ABILITY OF FUTURE GENERATION TO MEET OUR NEEDS. OUR GOAL IS ALL AROUND DEVELOPMENT OF HUMAN, SOCIAL ECONOMICAL AND ENVIRONMENTAL DEVELOPMENT .THE SUSTAINABLE DEVELOPMENT GOAL ARE THE BLUE PRINT TO ACHIEVE A BETTER AND MORE SUSTAINABLE FUTURE OF ALL.



RESPONSIBLE
MANUFACTURING

RESPONSIBLE MANUFACTURING

WITH A RESPONSIBLE MANUFACTURING APPROACH, WE WORK ACROSS ON OUR OPERATIONS FROM RAW MATERIAL SOURCING TO YARN MANUFACTURING, FABRIC MANUFACTURING, WAREHOUSING, GARMENT MANUFACTURING AND FROM DESIGN TO DELIVERY – TO BRING A POSITIVE CHANGE.

AZO FREE DYES (APPROVED BY OEKO-TEX)

ORGANIC DYES IS A SOLUTION PROVIDER OFFERING A BROAD RANGE OF HIGH QUALITY DYES. SPECIALITY CHEMICALS IS USED IN A DIVERSE BASE IN OUR PROCESS HOUSE FOR BEST QUALITY FABRIC.



Azo Free Dyes



BREATHABLE FABRICS

OUR FABRIC ARE MADE WITH A RANGE OF P.C / COTTON/ VISCOSE YARN. COTTON AND VISCOSE FIBRE ARE BREATHABLE YARN AND THERE FOR SUITABLE FOR ALL WEATHER. BREATHABLE FABRIC ALLOW MOISTURE TO PASS THROUGH, THUS MAKING IT MORE COMFORTABLE TO WEAR ALL SEASON.





VISION



VISION-01 | SURE SHOT- SS194

VISION-02 | BIG BOSS-512



VISION-03 | BIG BOSS-5128

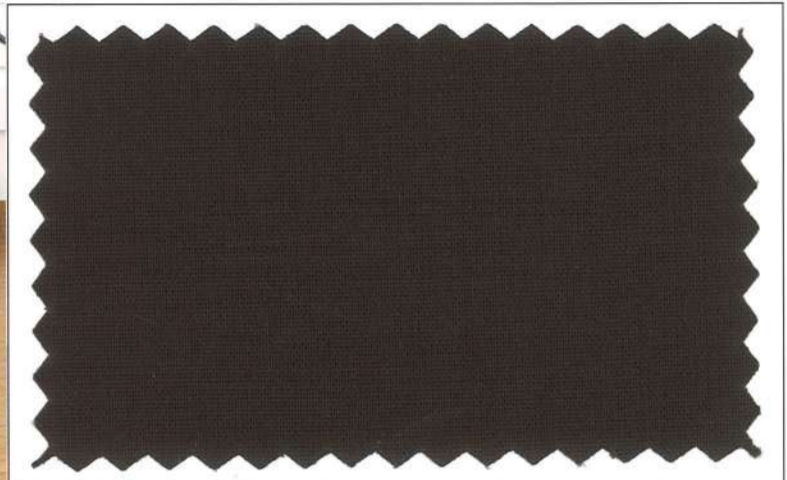
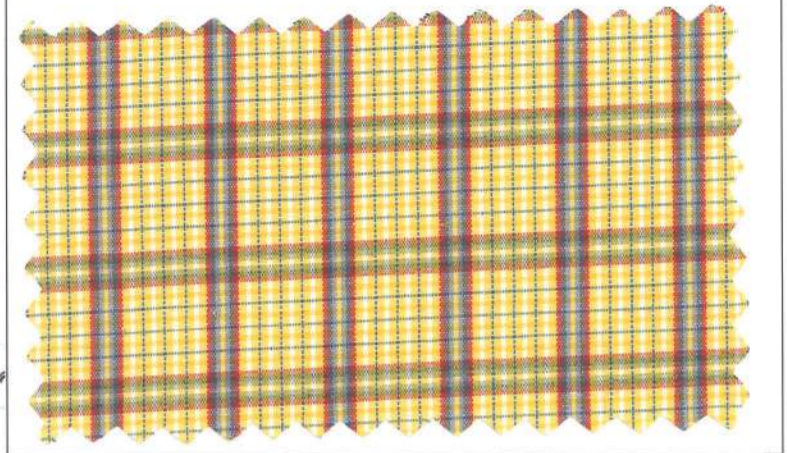
A young boy and a young girl modeling school uniforms. The boy is wearing a blue and red checkered shirt with brown trousers and a white belt. The girl is wearing a blue and red checkered dress with brown accents. To the right are two fabric swatches: the top one shows the checkered pattern with a scalloped edge, and the bottom one is a solid dark brown fabric with a scalloped edge.

VISION-04 | SURE SHOT-306

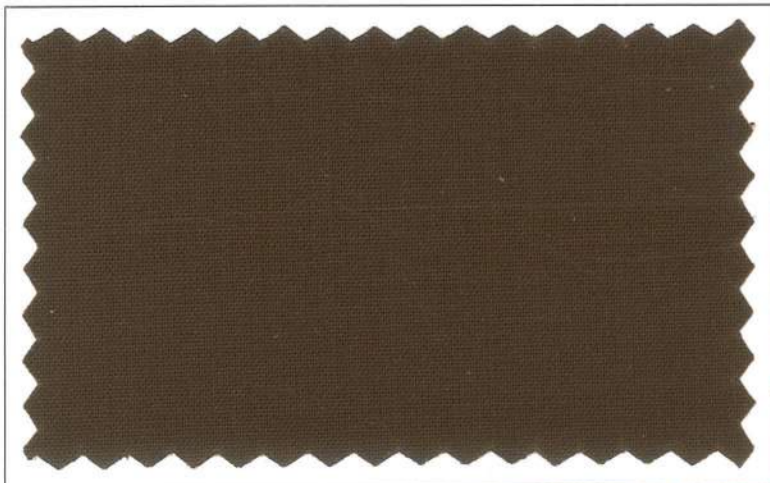
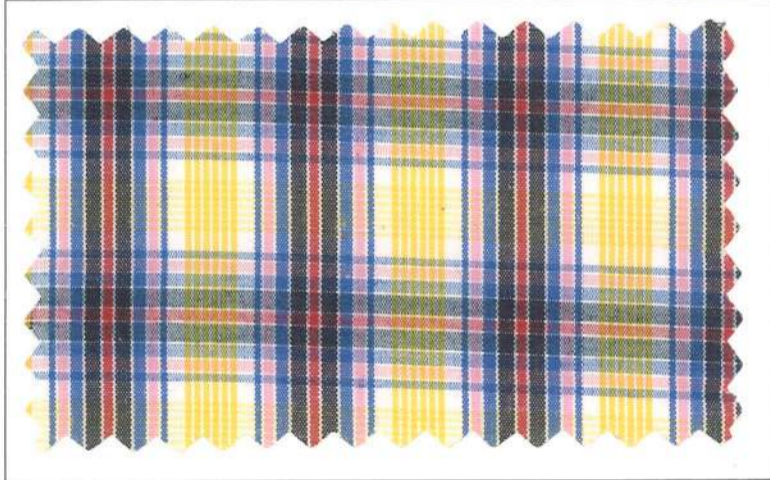
A young girl and a young boy modeling school uniforms. The girl is wearing a blue and red checkered top with a grey pleated skirt. The boy is wearing a blue and red checkered shirt with grey shorts and a white belt. To the left are two fabric swatches: the top one shows the checkered pattern with a scalloped edge, and the bottom one is a solid dark grey fabric with a scalloped edge.



VISION-05 | BIG BOSS-569



VISION-06 | BIG BOSS-5128





VISION-07 | BIG BOSS-525

VISION-08 | BIG BOSS-5111



VISION-09 | BIG BOSS-567

A boy and a girl modeling school uniforms. The boy is wearing a light blue and white checkered shirt with a tan yoke and tan trousers. The girl is wearing a light blue and white checkered kurta with a tan yoke and tan trousers. To the right are two fabric swatches: a colorful plaid pattern and a solid tan color.

VISION-10 | BIG BOSS-5128

A girl and a boy modeling school uniforms. The girl is wearing a light blue and white checkered short-sleeved shirt with a brown collar and a brown pleated skirt. The boy is wearing a light blue and white checkered long-sleeved shirt with a brown collar and two chest pockets, and brown trousers. To the left are two fabric swatches: a colorful plaid pattern and a solid brown color.



VISION-11 | BIG BOSS-564

A young girl and a young boy are modeling school uniforms. The girl is wearing a blue dress over a patterned top, and the boy is wearing a patterned shirt and blue shorts. To the right are two fabric swatches: a multi-colored plaid pattern and a solid black fabric with a scalloped edge.

VISION-12 | BIG BOSS-51 13

A young boy and a young girl are modeling school uniforms. The boy is wearing a light blue patterned shirt and dark pants, and the girl is wearing a light blue patterned dress over a dark top. To the left are two fabric swatches: a blue and yellow plaid pattern and a solid black fabric with a scalloped edge.

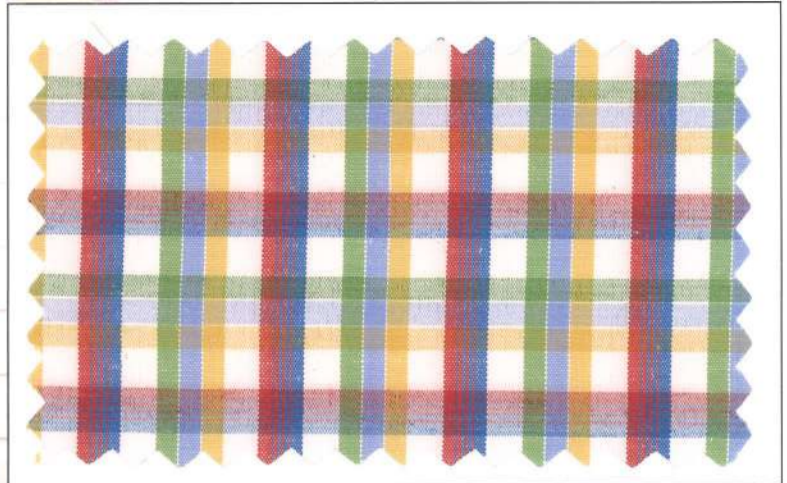


VISION-13 | BIG BOSS-565

VISION-14 | SURE SHOT-310



VISION-15 | BIG BOSS-5130



VISION-16 | BIG BOSS-5132





VISION-17 | BIG BOSS-589

A young girl and a young boy modeling school uniforms. The girl is wearing a grey dress with a yellow and black striped belt. The boy is wearing a yellow and black checkered shirt and grey trousers with a black and white striped belt. To the right are two fabric swatches: the top one is a colorful plaid pattern, and the bottom one is solid black.

VISION-18 | BIG BOSS-5129

A young girl and a young boy modeling school uniforms. The girl is wearing a purple and white checkered dress with a dark purple belt. The boy is wearing a purple and white checkered shirt and dark purple shorts with a dark purple and white striped belt. To the left are two fabric swatches: the top one is a colorful plaid pattern, and the bottom one is solid dark purple.



VISION-19 | SURE SHOT-317

VISION-19 | SURE SHOT-317

VISION-20 | BIG BOSS-595

VISION-20 | BIG BOSS-595



VISION-21 | BIG BOSS-530

A young girl and a young boy modeling school uniforms. The girl is wearing a blue and white checkered short-sleeved shirt with a blue collar and a blue skirt. The boy is wearing a blue and white checkered short-sleeved shirt and blue trousers, holding a cricket bat.

VISION-22 | BIG BOSS-516

A young girl and a young boy modeling school uniforms. The girl is wearing a purple and white checkered short-sleeved dress with a purple collar and a purple pocket. The boy is wearing a purple and white checkered short-sleeved shirt and purple shorts.



VISION-23 | BIG BOSS-503

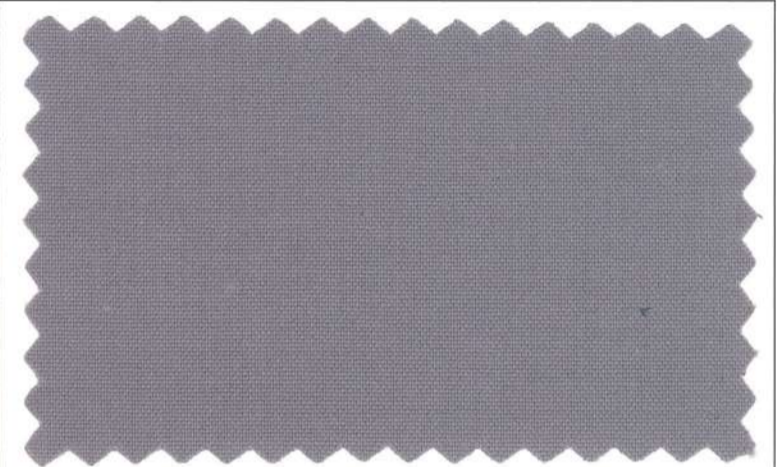
A young girl and a young boy modeling school uniforms. The girl wears a purple and white checkered short-sleeved top with a large orange bow at the collar and a matching orange skirt with a pocket. The boy wears a purple and white checkered short-sleeved shirt with a collar and orange shorts with a matching belt. To the right are two fabric swatches: the top one is a purple, white, and orange checkered pattern, and the bottom one is a solid orange color.

VISION-24 | BIG BOSS-5124

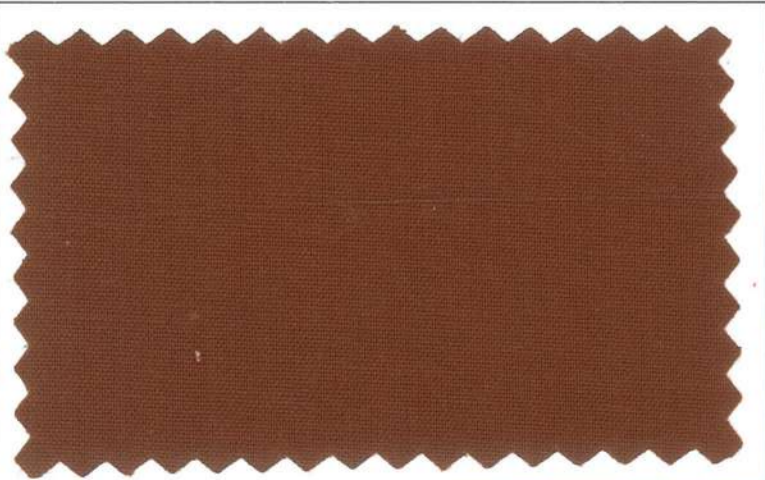
A young boy and a young girl modeling school uniforms. The boy wears a red and white striped short-sleeved shirt with a collar and red trousers with a black belt. The girl wears a red and white striped short-sleeved dress with a pink collar and pink trim. To the left are two fabric swatches: the top one is a red, white, and yellow striped pattern, and the bottom one is a solid red color.



VISION-25 | BIG BOSS-587

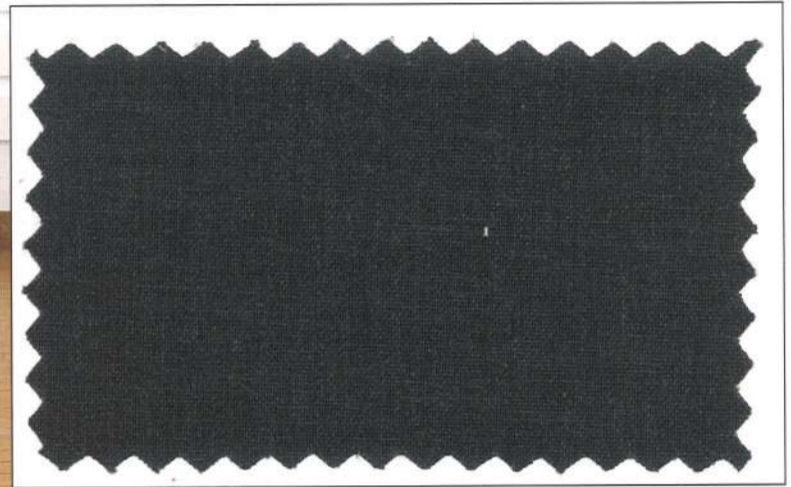
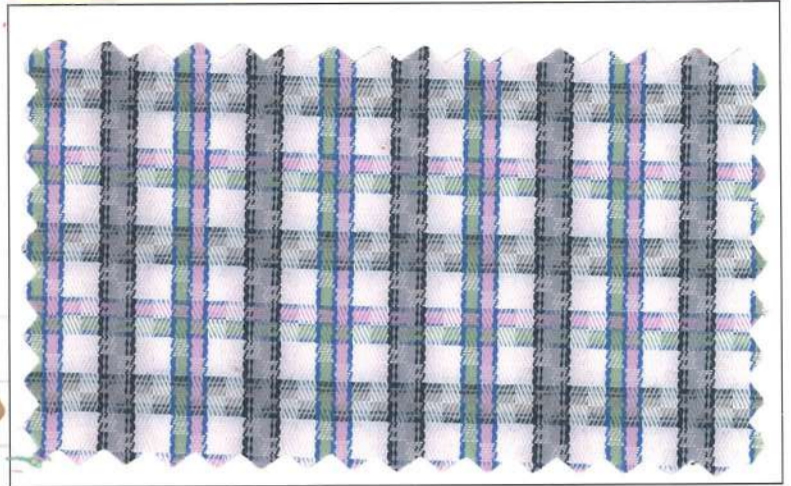


VISION-26 | BIG BOSS-579

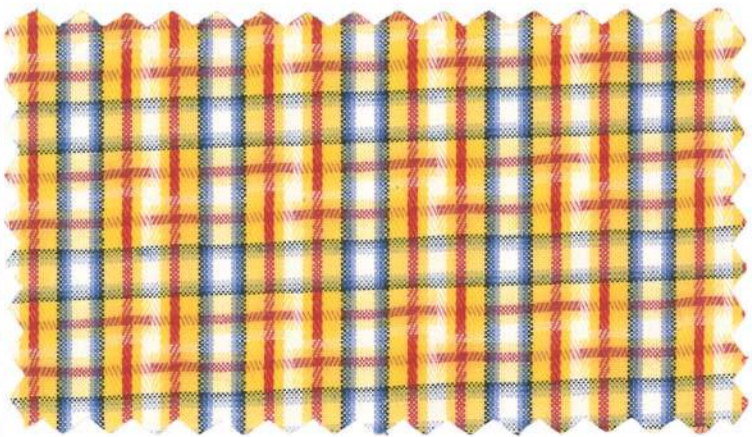




VISION-27 | BIG BOSS-527

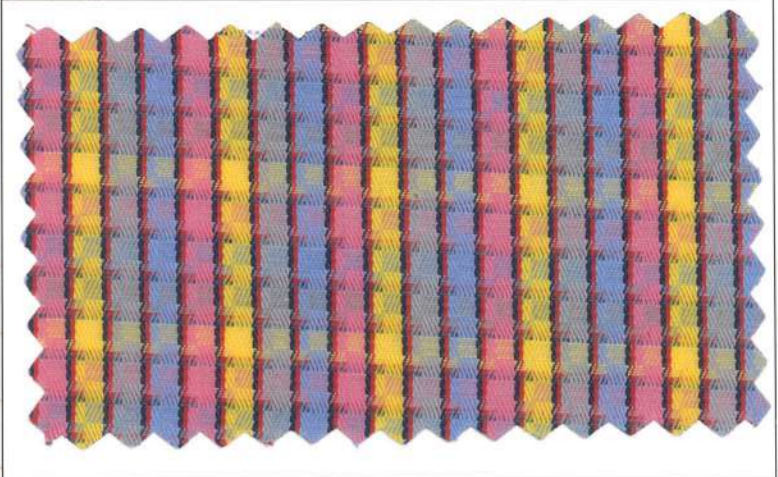


VISION-28 | BIG BOSS-581

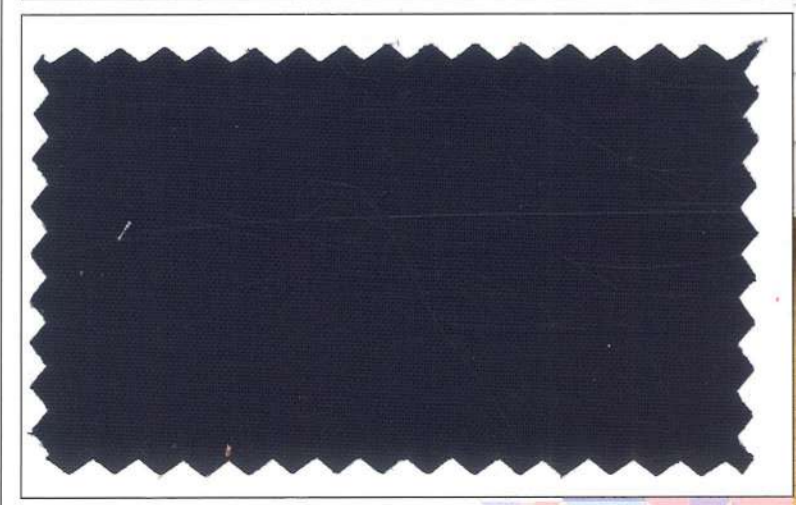
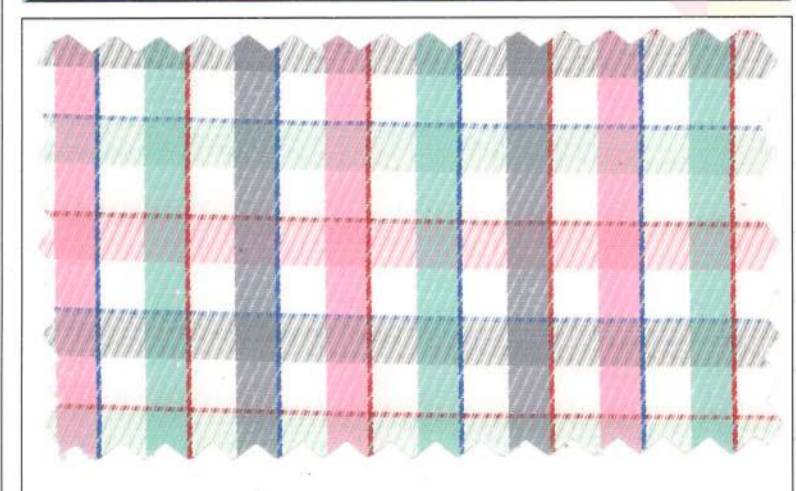




VISION-29 | BIG BOSS-570



VISION-30 | BIG BOSS-5111





VISION-31 | BIG BOSS-585

A young girl in a blue dress with a white and blue checkered patterned bodice and a matching belt. A young boy in a blue and white checkered short-sleeved shirt with a dark blue bow tie and dark blue shorts with a white belt. Two fabric swatches are shown: the top one is a blue, orange, and yellow plaid pattern, and the bottom one is a solid dark blue color.

VISION-32 | SURE SHOT-356

A young girl in a purple and white checkered short-sleeved shirt and a purple pleated skirt with a white belt. A young boy in a purple and white checkered short-sleeved shirt with a purple bow tie and purple shorts with a white belt. Two fabric swatches are shown: the top one is a purple, yellow, and red plaid pattern, and the bottom one is a solid purple color.





VISION-35 | BIG BOSS-586

A woman and a man are modeling a multi-colored plaid fabric. The woman is wearing a short-sleeved top and a dark skirt, while the man is wearing a long-sleeved shirt and dark trousers. To the right of the models are two fabric swatches: a multi-colored plaid pattern and a solid black fabric.

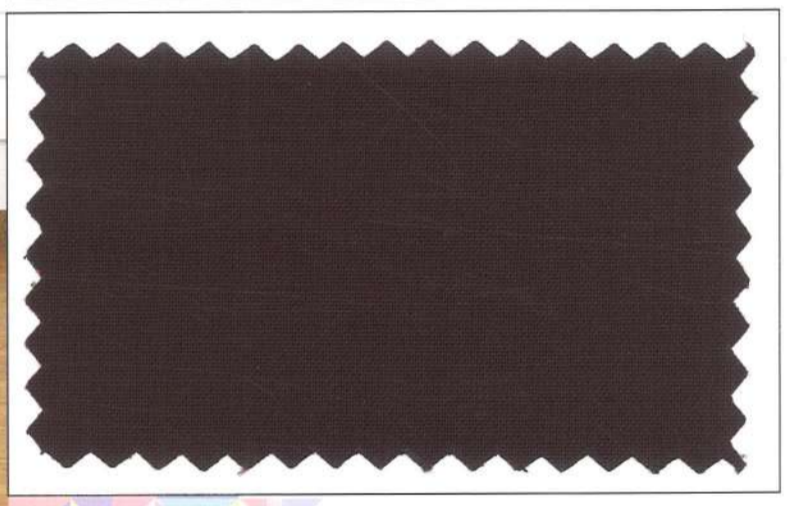
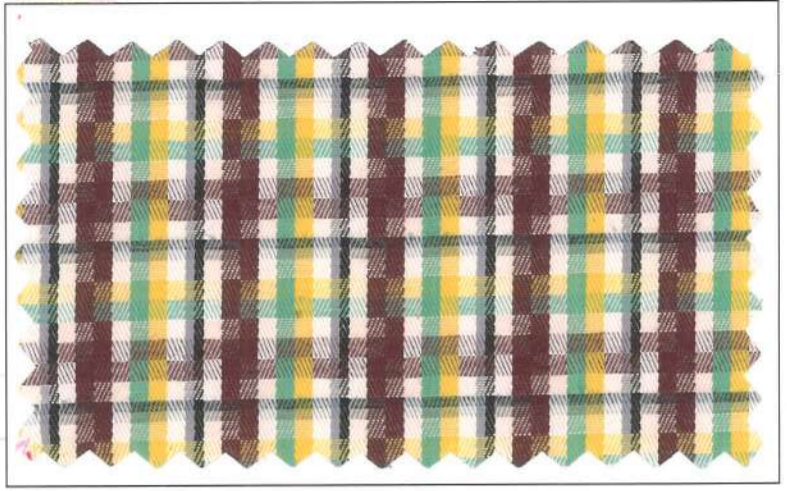
VISION-36 | SURE SHOT-356

A man and a woman are modeling a purple and pink plaid fabric. The man is wearing a long-sleeved shirt and purple trousers, while the woman is wearing a purple and pink plaid dress. To the left of the models are two fabric swatches: a purple and pink plaid pattern and a solid purple fabric.

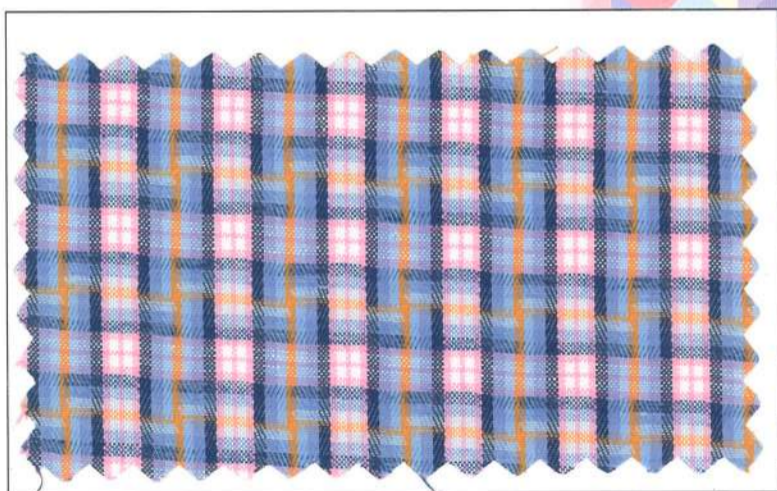




VISION-39 | BIG BOSS-5131

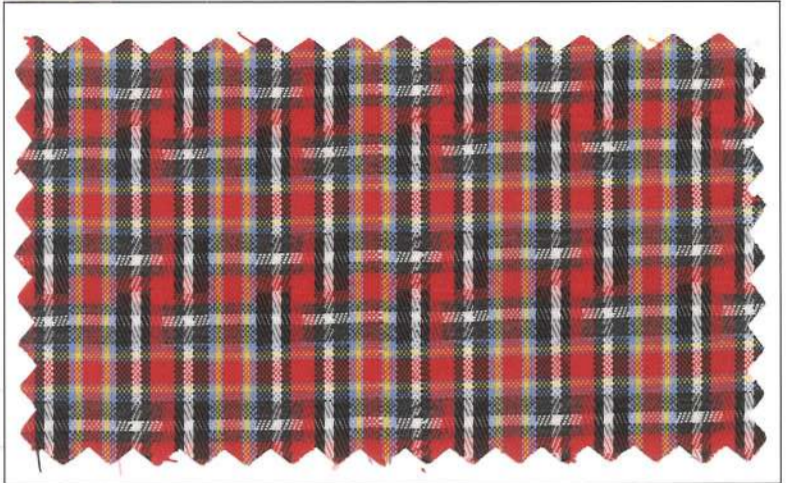


VISION-40 | BIG BOSS-525

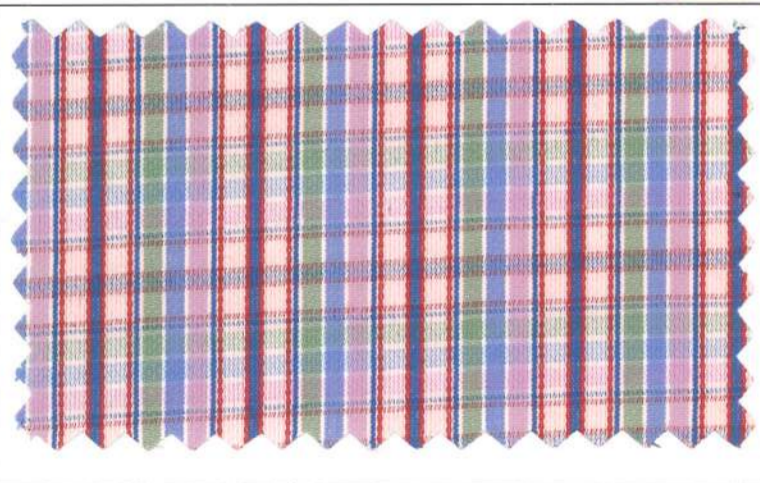




VISION-41 | BIG BOSS-590



VISION-42 | SURE SHOT-317





VISION-43 | BIG BOSS-511

A young girl and a young boy modeling school uniforms. The girl is wearing a pink and white striped shirt and a brown skirt. The boy is wearing a pink and white striped shirt and brown shorts. To the right are two fabric swatches: the top one has a pink, white, and brown striped pattern, and the bottom one is solid brown.

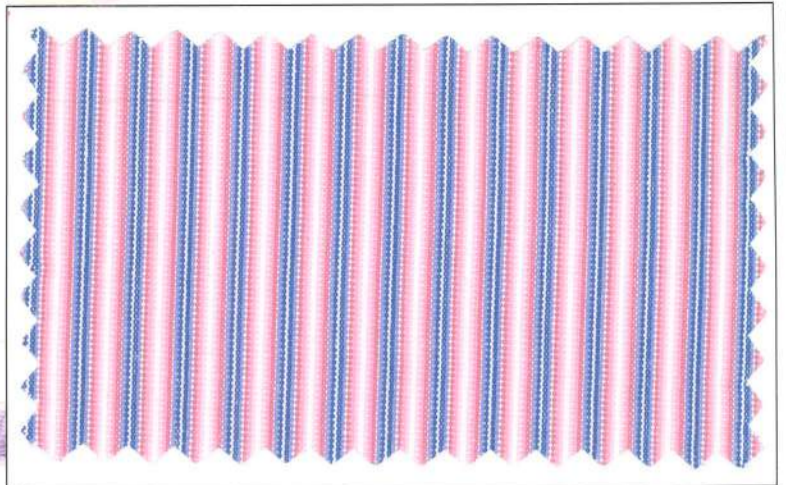
VISION-44 | SURE SHOT-317

A young girl and a young boy modeling school uniforms. The girl is wearing a purple and white striped shirt and a purple dress, carrying a red backpack. The boy is wearing a purple and white striped shirt and purple shorts. To the left are two fabric swatches: the top one has a purple, white, and red striped pattern, and the bottom one is solid dark blue.

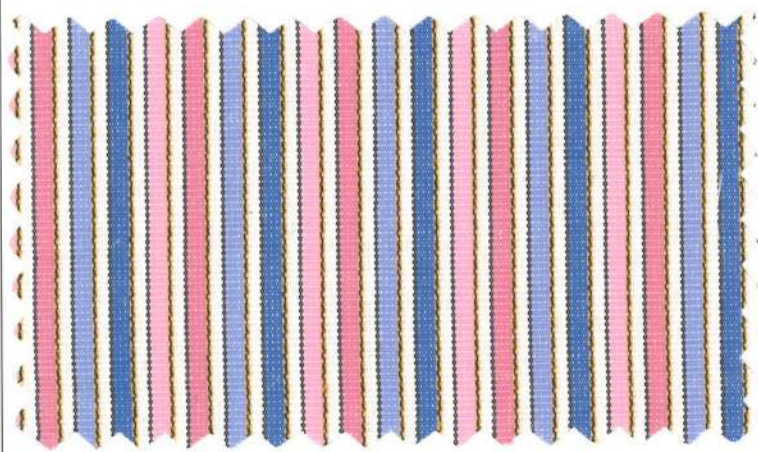




VISION-47 | BIG BOSS-525

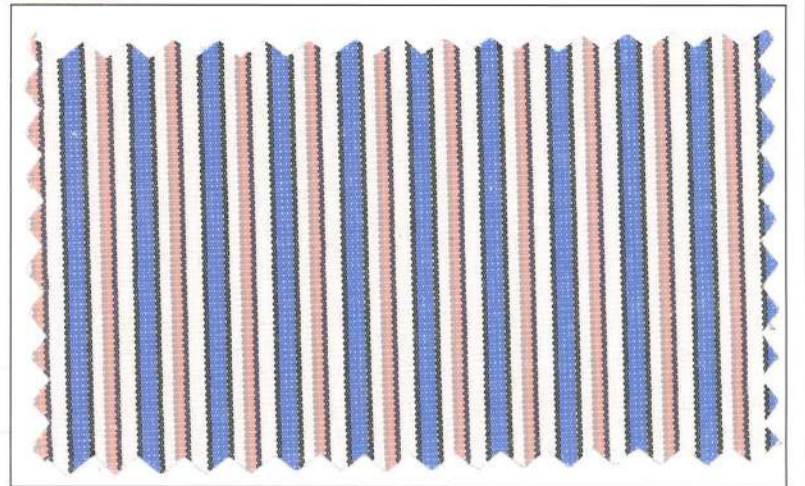


VISION-48 | BIG BOSS-562

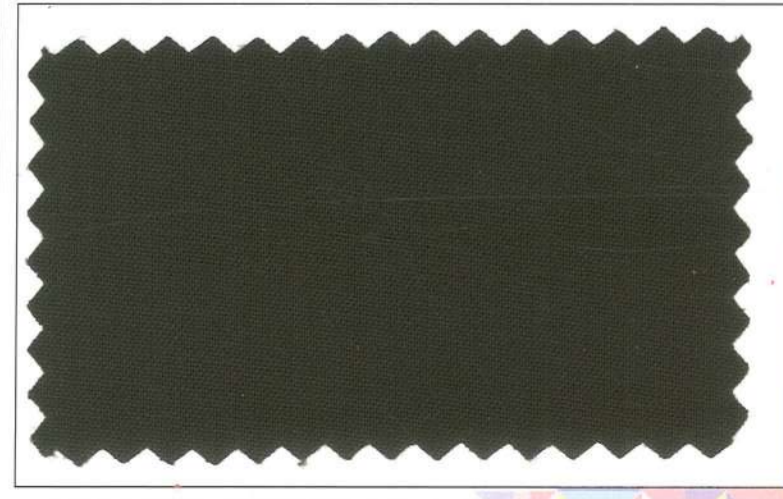




VISION-49 | BIG BOSS-585



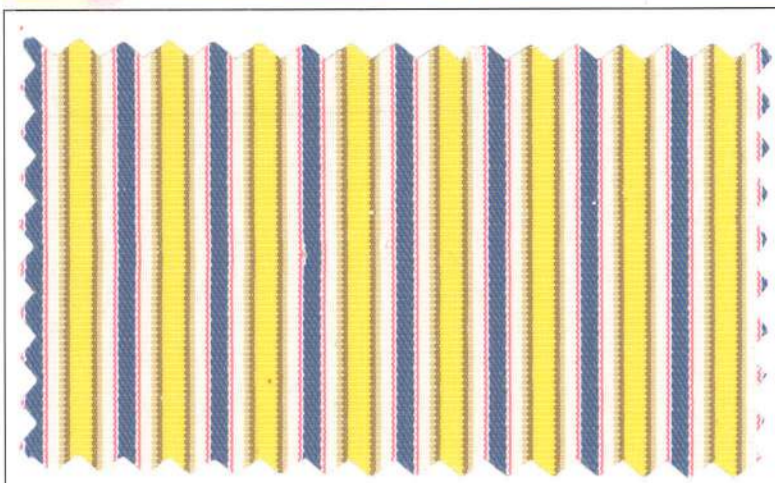
VISION-50 | BIG BOSS-597

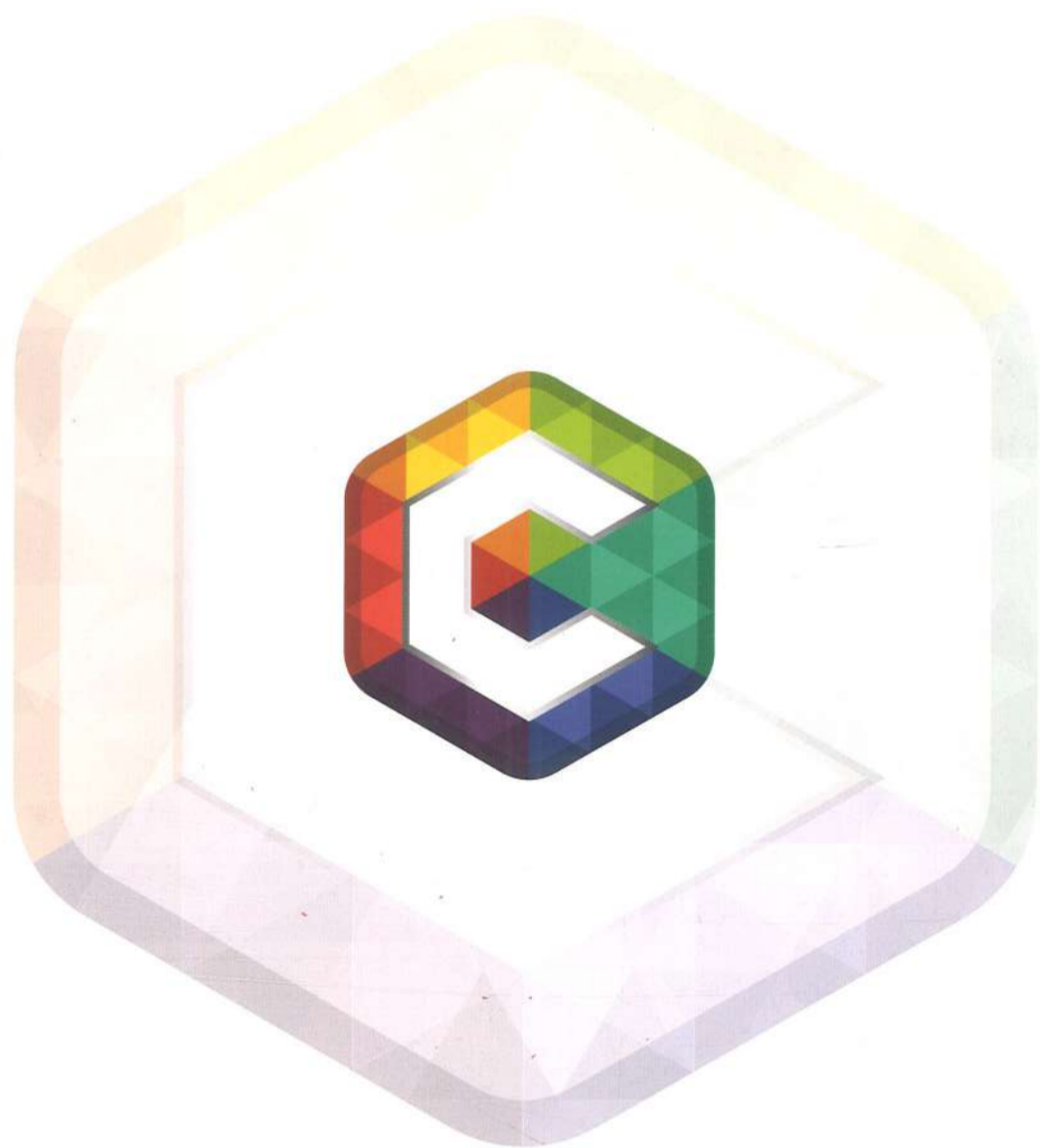




VISION-51 | BIG BOSS-5111

MAFATLAL COTTON RICH POLYESTER
BLENDED UNIFORM SHIRTING FABRICS
WITH EXCELLENT BREATHABILITY AND
FINISHED TO PERFECTION AVAILABLE IN
MORE THAN 1400 DESIGNS ANY TIME
STOCK ATS CONSISTS OF 900 DESIGNS
OF THESE SHIRTINGS ARE ALWAYS
AVAILABLE IN STOCK





FIRST CHOICE



FC-1 | SURE SHOT-317

Image showing a young boy and girl modeling school uniforms. The boy is wearing a blue and white checkered shirt, a dark tie, and blue shorts. The girl is wearing a blue dress with a white checkered collar and a dark belt. To the right are two fabric swatches: the top one is a blue, red, and white plaid pattern, and the bottom one is a solid dark blue fabric.

FC-2 | BIG BOSS-586

Image showing a young girl and boy modeling school uniforms. The girl is wearing a black dress with a white checkered collar and a white sash. The boy is wearing a white and grey checkered shirt with a black collar and black trousers. To the left are two fabric swatches: the top one is a multi-colored plaid pattern (red, blue, green, yellow, and white), and the bottom one is a solid black fabric.



FC-3 | BIG BOSS-564

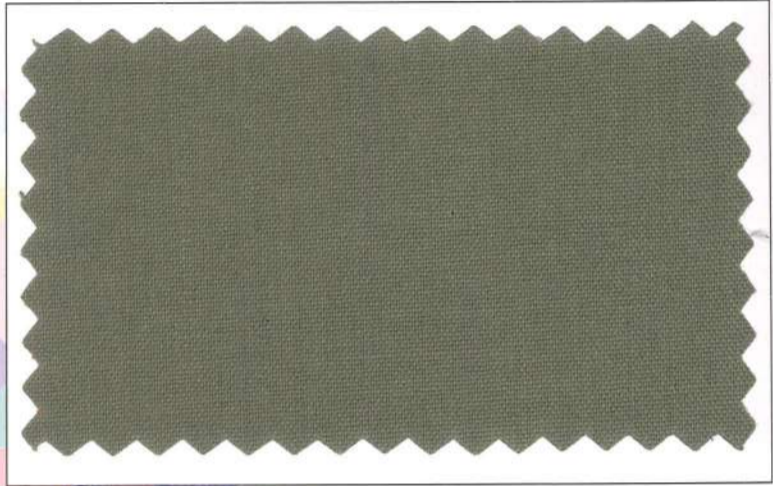
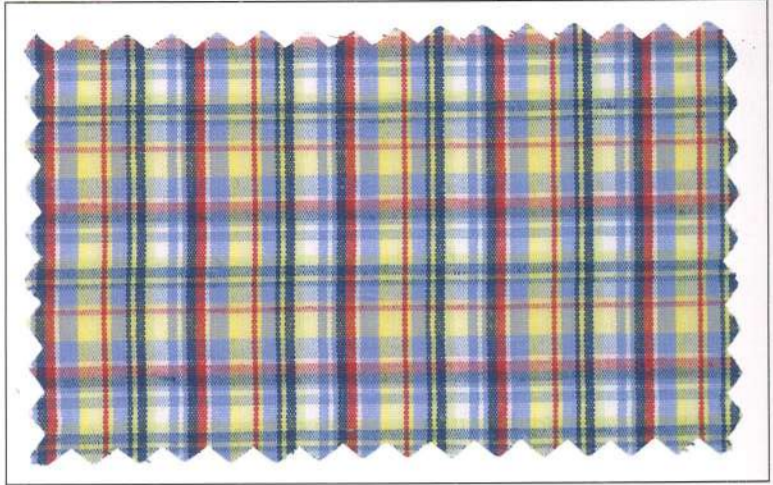
FC-3 | BIG BOSS-564

FC-4 | BIG BOSS-584

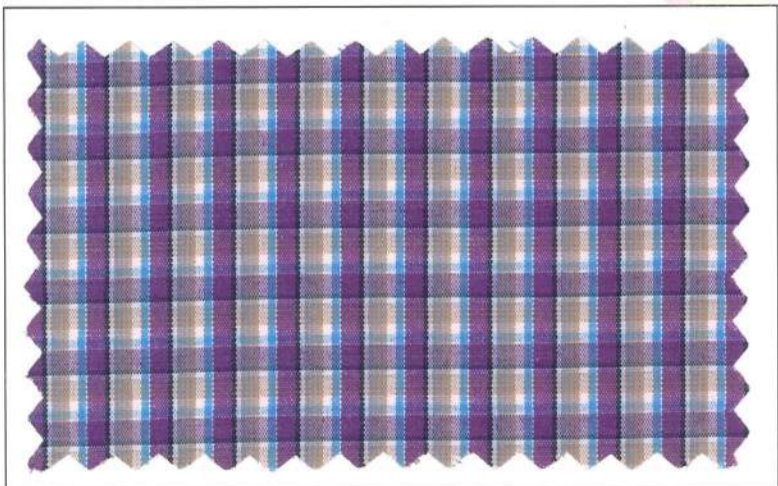
FC-4 | BIG BOSS-584



FC-5 | BIG BOSS-565



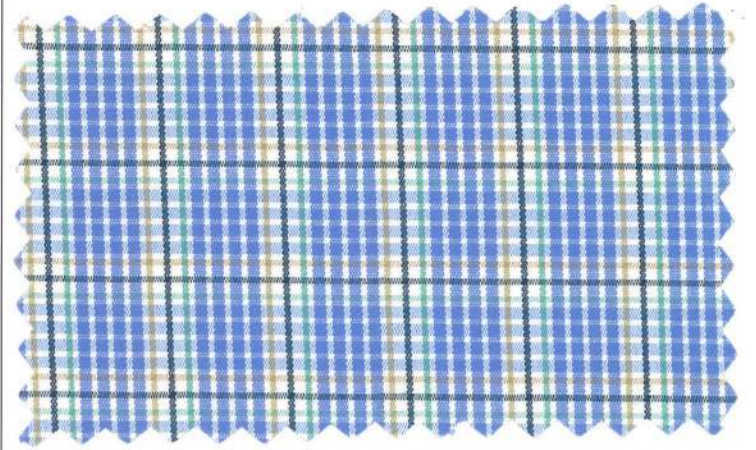
FC-6 | SURE SHOT-3122



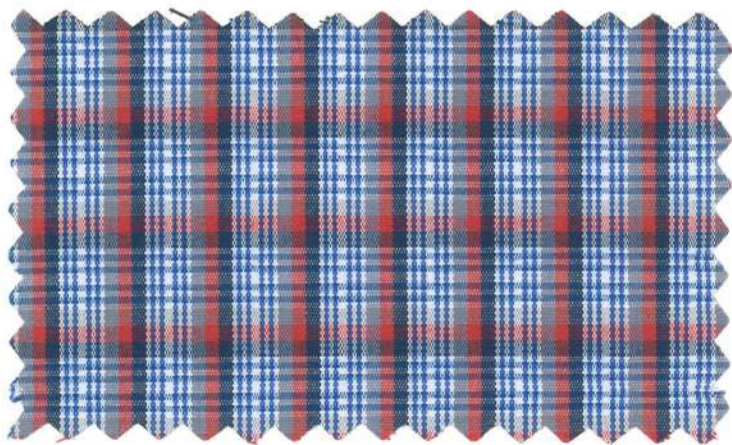




FC-9 | BIG BOSS-530

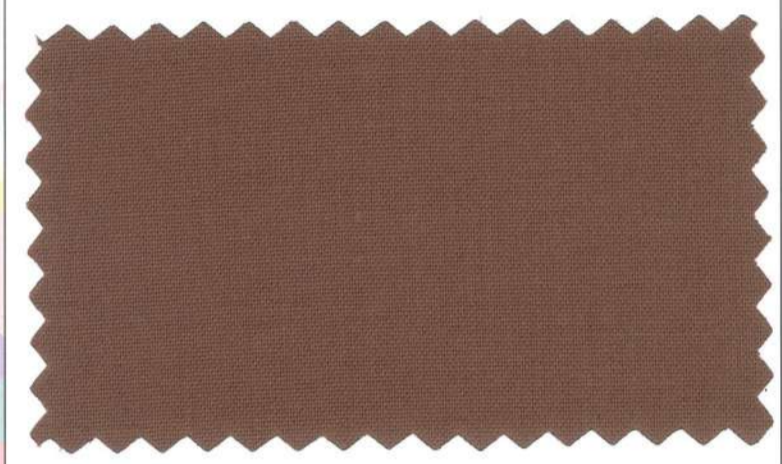
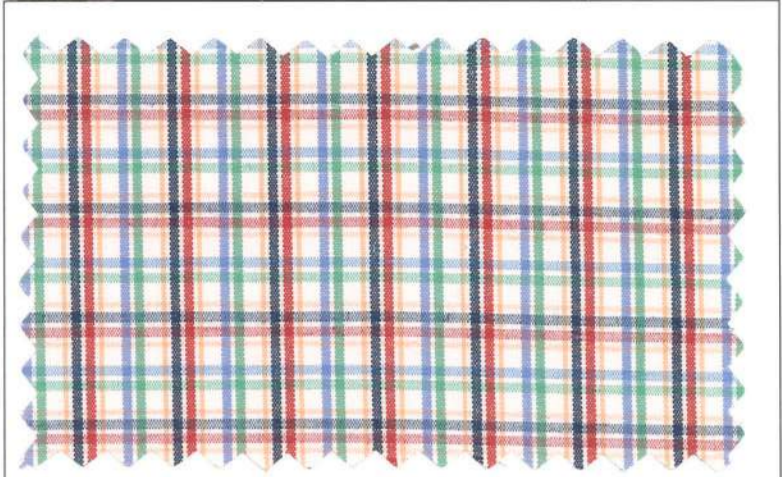


FC-10 | BIG BOSS-512





FC-11 | BIG BOSS-578



FC-12 | BIG BOSS-5111





FC-13 | SURE SHOT-326

FC-14 | BIG BOSS-574



FC-15 | BIG BOSS-527

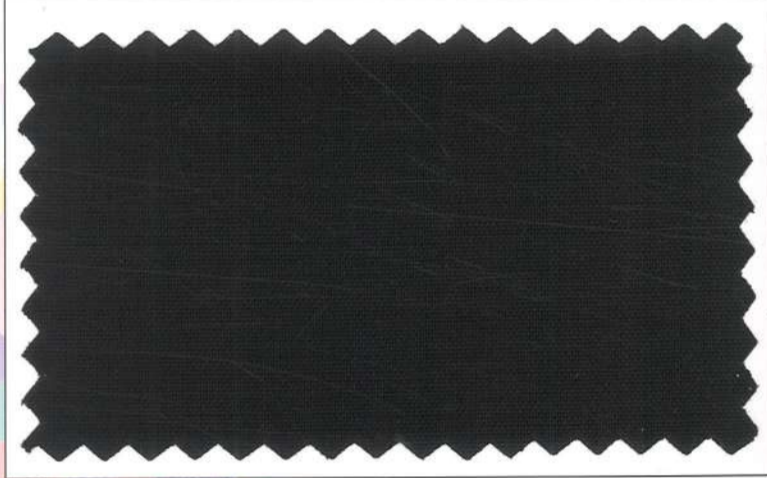
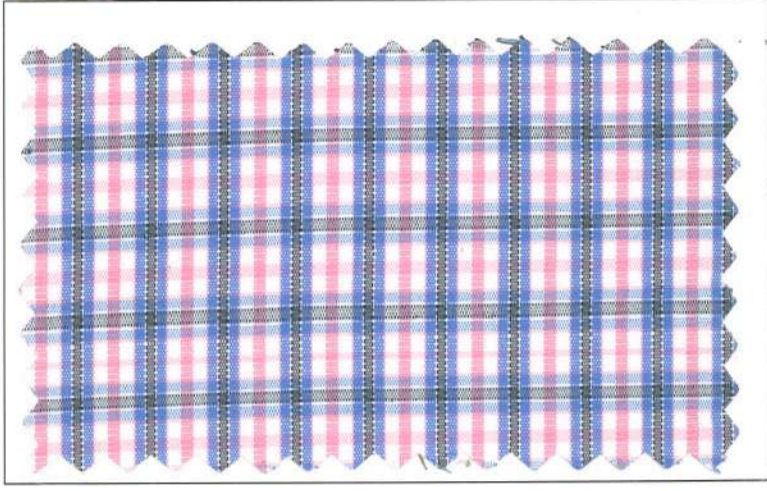
FC-15 | BIG BOSS-527

FC-16 | BIG BOSS-5113

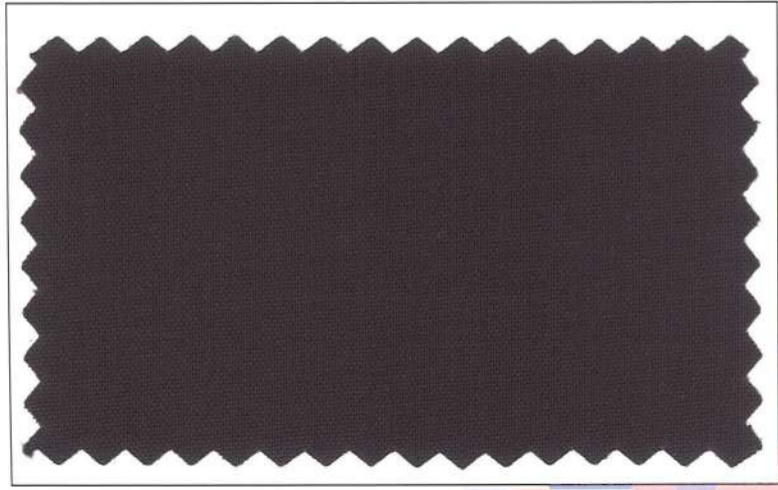
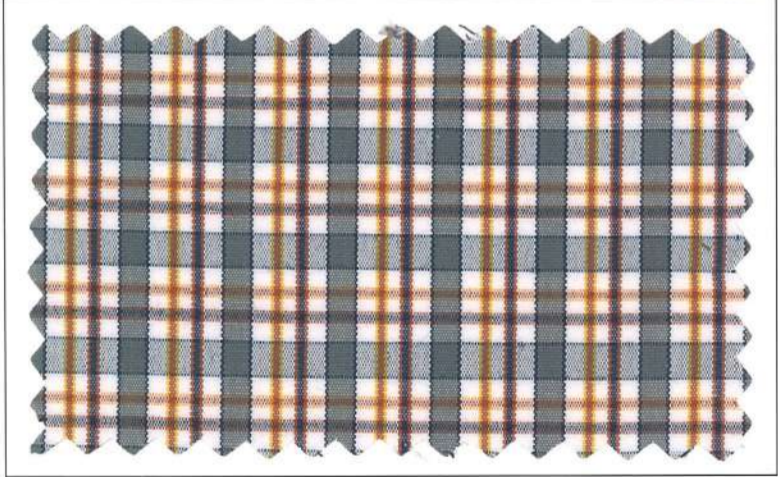
FC-16 | BIG BOSS-5113



FC-17 | BIG BOSS-580

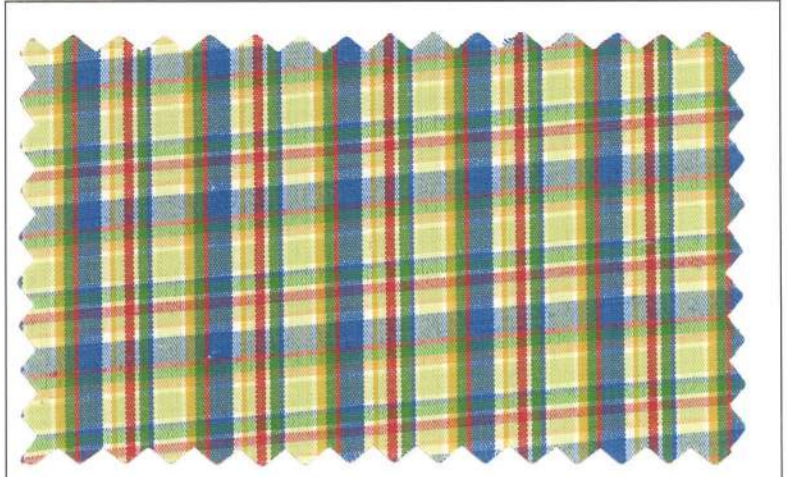


FC-18 | BIG BOSS-589

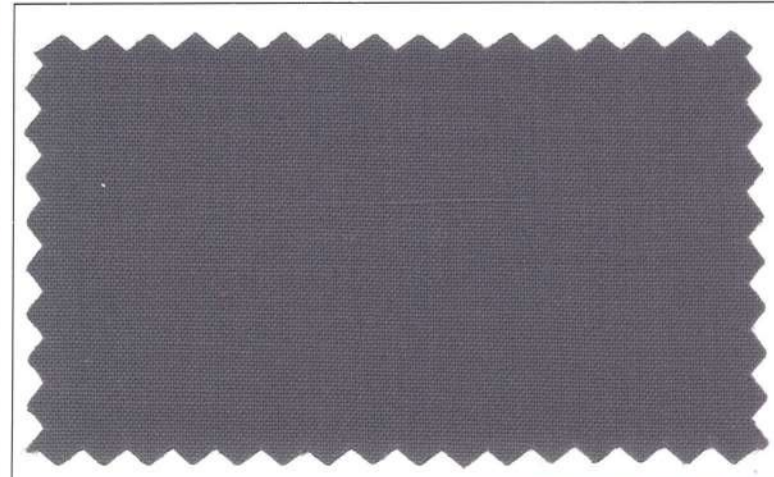
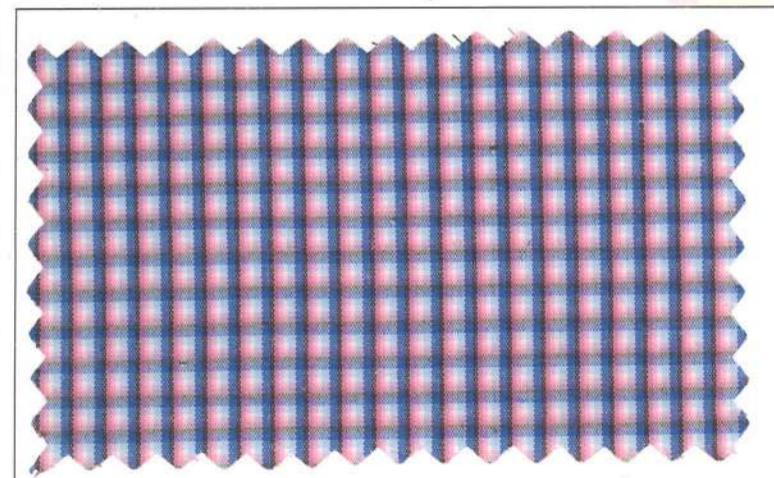




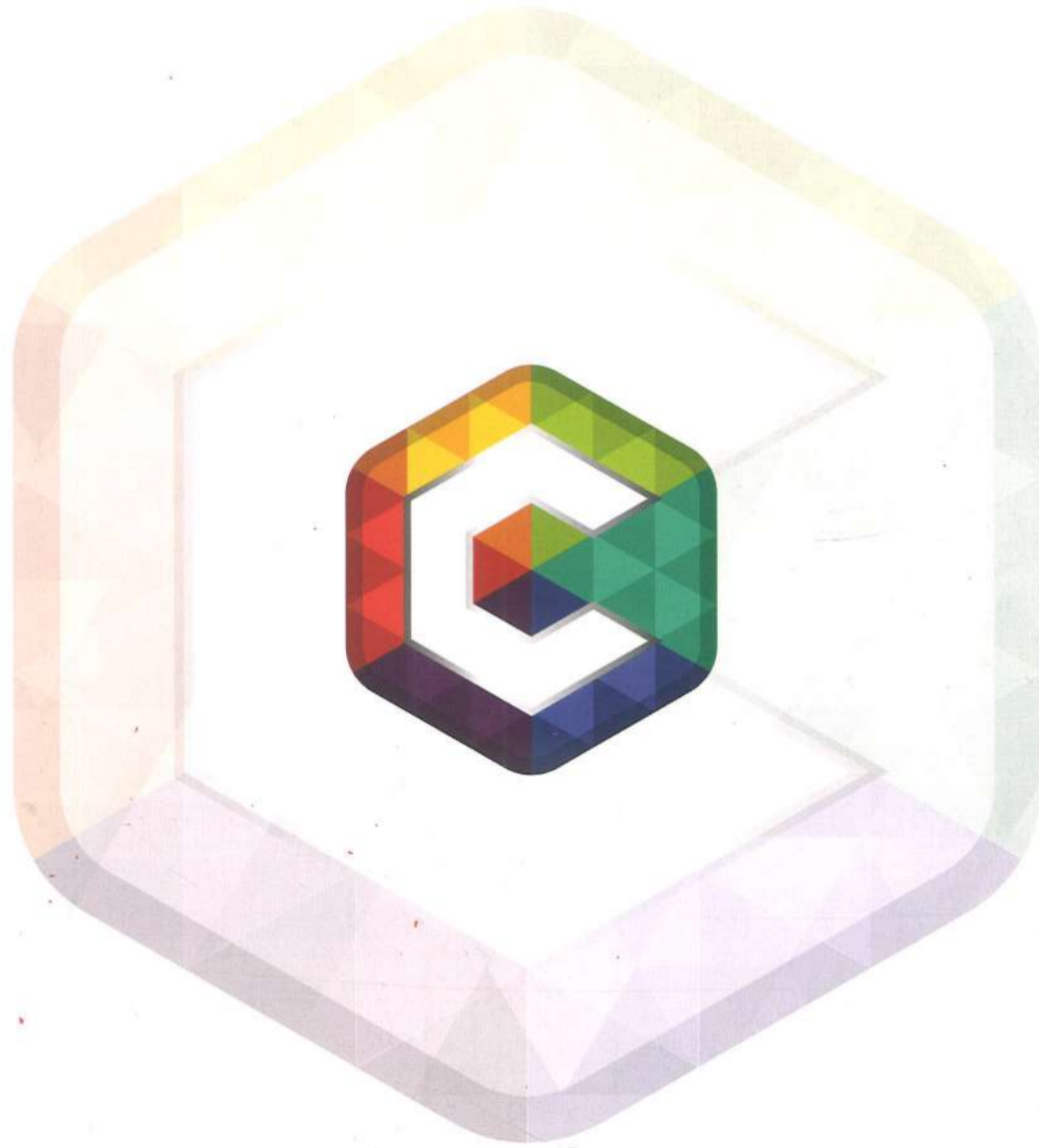
FC-19 | BIG BOSS-5111



FC-20 | BIG BOSS-576







VIVAAN



V-1 | BIG BOSS-570



V-2 | BIG BOSS-574











V-9 | BIG BOSS-5113

A young girl and a young boy are shown wearing school uniforms. The girl is wearing a black dress with a plaid shirt and a black vest. The boy is wearing a plaid shirt, a black tie, and black shorts. To the right of the models are two fabric swatches: a colorful plaid pattern and a solid black fabric.

V-10 | BIG BOSS-567

A young girl and a young boy are shown wearing school uniforms. The girl is wearing a tan dress with a plaid shirt and a tan vest. The boy is wearing a plaid shirt, a tan tie, and tan shorts. To the left of the models are two fabric swatches: a colorful plaid pattern and a solid tan fabric.



V-11 | BIG BOSS-575

Two fabric swatches are shown to the right of the models. The top swatch features vertical stripes in shades of purple, pink, and grey. The bottom swatch is a solid black fabric with a scalloped edge.

V-12 | BIG BOSS-596

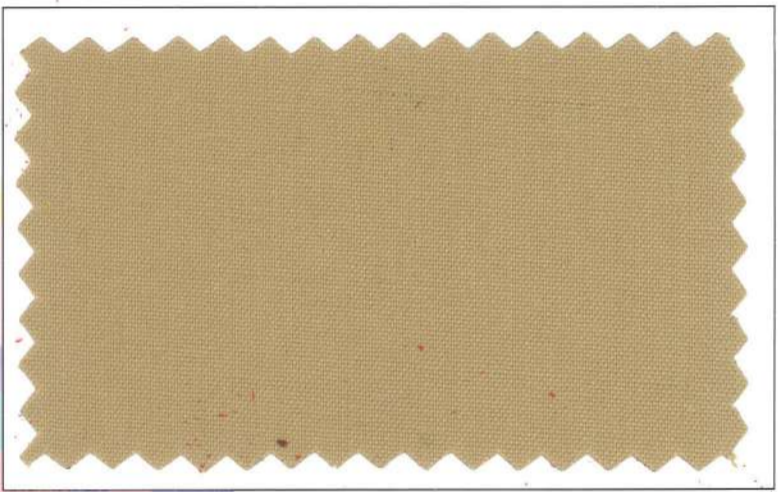
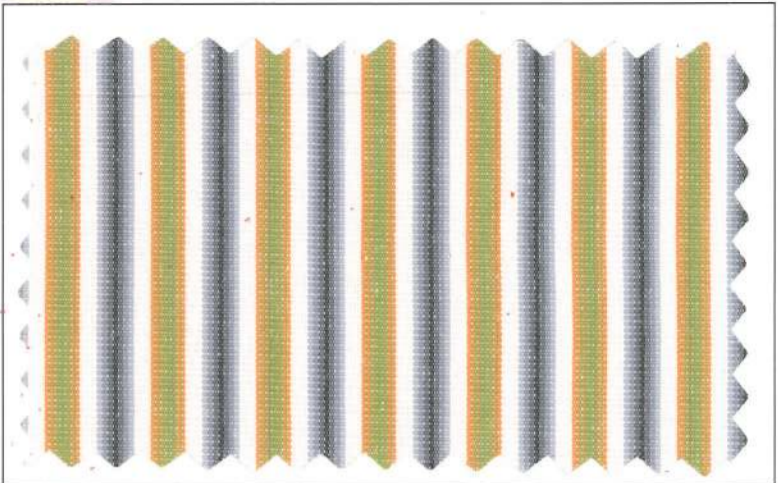
Two fabric swatches are shown to the left of the models. The top swatch features vertical stripes in shades of blue, red, and white. The bottom swatch is a solid black fabric with a scalloped edge.



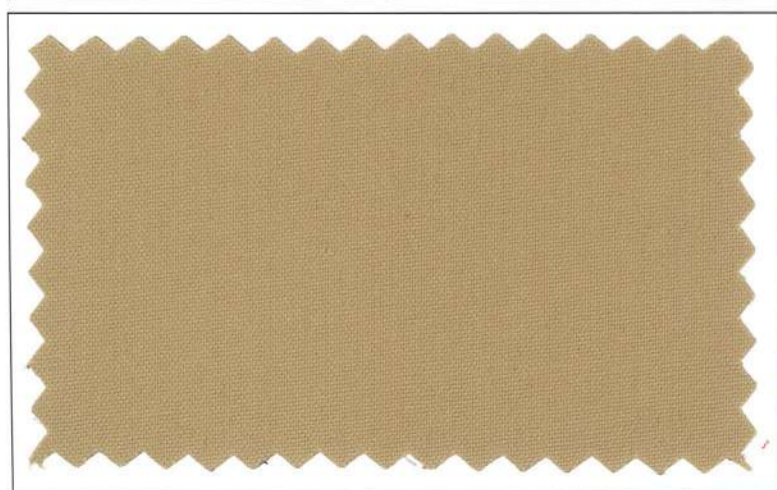
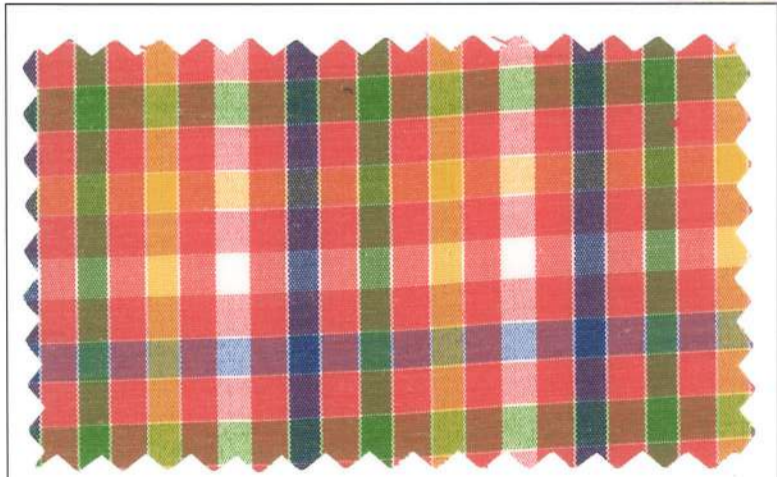




V-17 | BIG BOSS-567



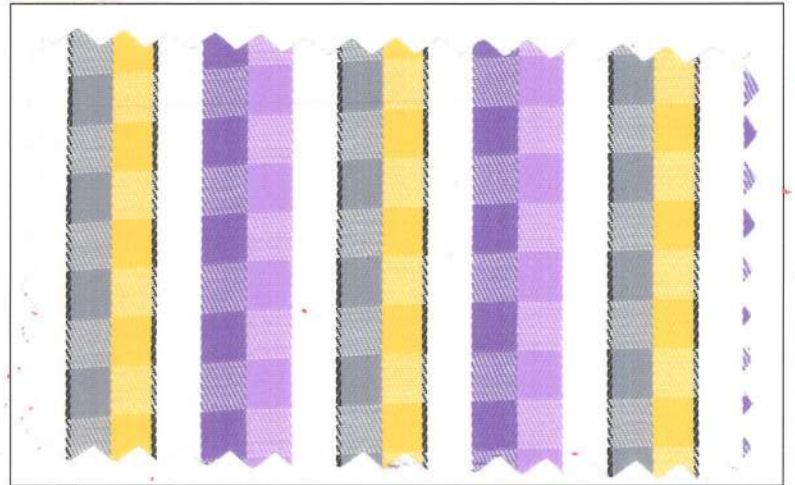
V-18 | BIG BOSS-567



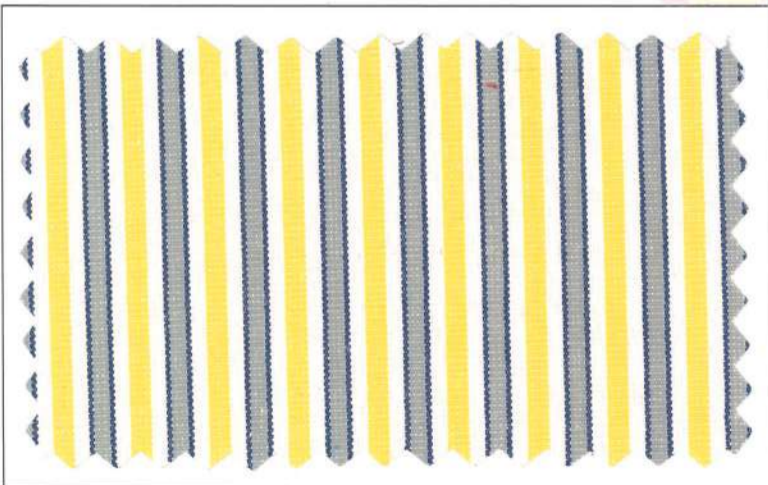




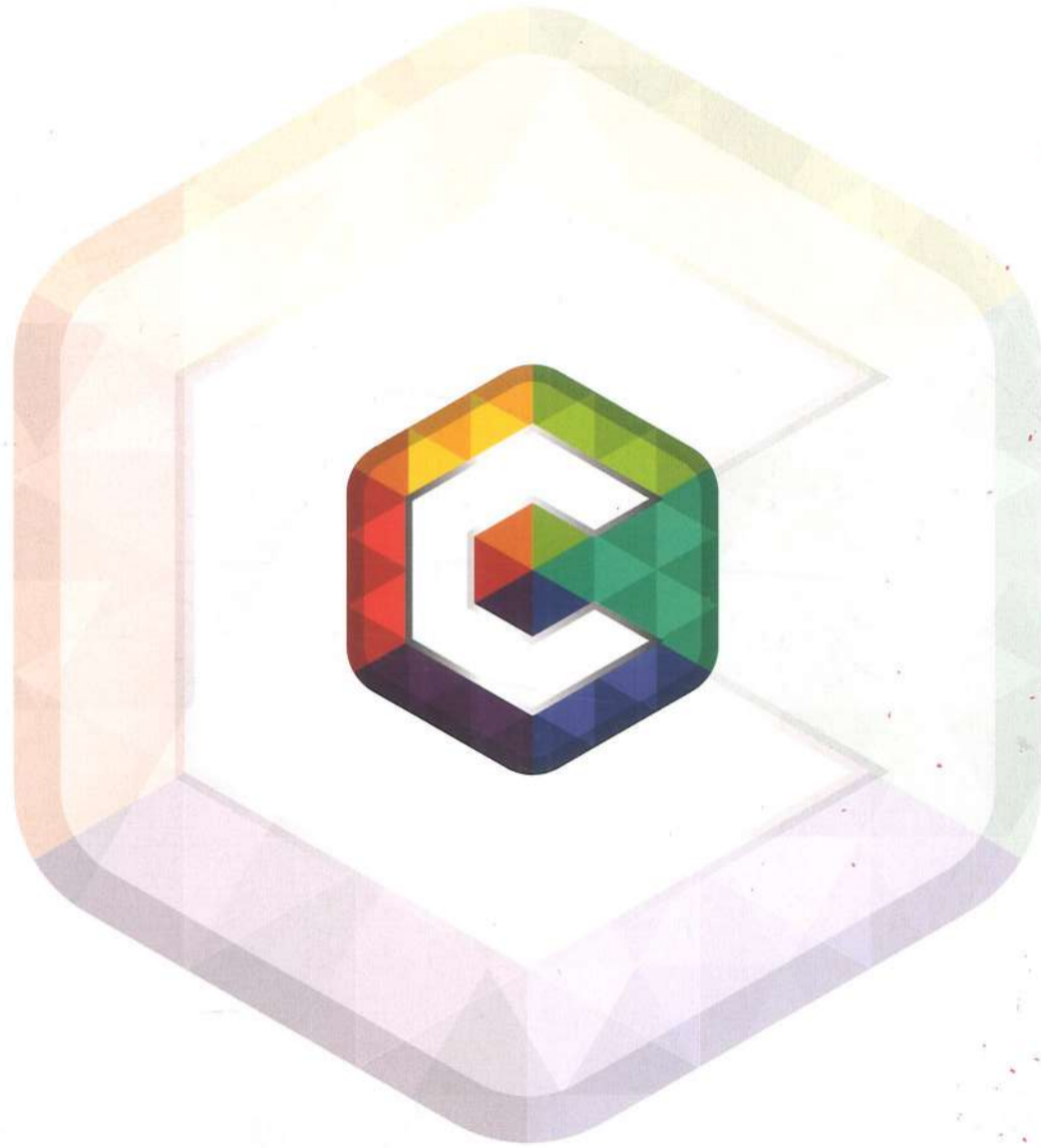
V-21 | SURE SHOT-356



V-22 | BIG BOSS-596







ROYAL COLLECTION





RC-3 | BIG BOSS-5132

A boy and a girl are shown wearing school uniforms. The boy is wearing a blue and white checkered shirt, blue shorts, and a blue tie. The girl is wearing a blue dress with a white collar and a yellow belt. To the right are two fabric swatches: the top one is a multi-colored plaid pattern, and the bottom one is a solid dark blue color.

RC-4 | BIG BOSS-5111

A boy and a girl are shown wearing school uniforms. The boy is wearing a purple and white striped shirt, black trousers, and a yellow belt. The girl is wearing a purple and white striped dress with a white collar and a black belt. To the left are two fabric swatches: the top one is a purple and white striped pattern, and the bottom one is a solid dark blue color.



ROYAL COLLECTION

RC-5 | BIG BOSS-5111

A boy and a girl are shown wearing school uniforms. The boy is wearing a short-sleeved checkered shirt and dark trousers. The girl is wearing a dark dress over a checkered shirt. To the right are two fabric swatches: the top one shows the checkered pattern, and the bottom one is a solid dark color.

RC-6 | BIG BOSS-565

A boy and a girl are shown wearing school uniforms. The boy is wearing a short-sleeved checkered shirt and shorts. The girl is wearing a checkered shirt and a grey skirt. To the left are two fabric swatches: the top one shows the checkered pattern, and the bottom one is a solid dark color.



RC-7 | SURE SHOT-310

RC-7 | SURE SHOT-310

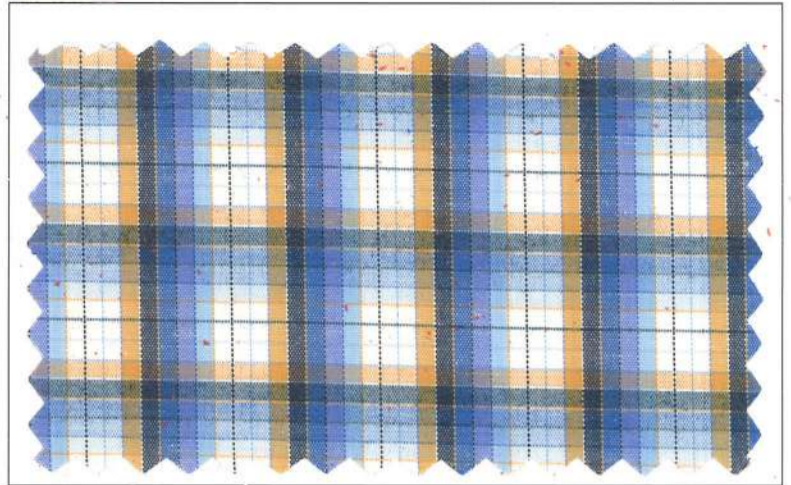
RC-8 | BIG BOSS-596

RC-8 | BIG BOSS-596

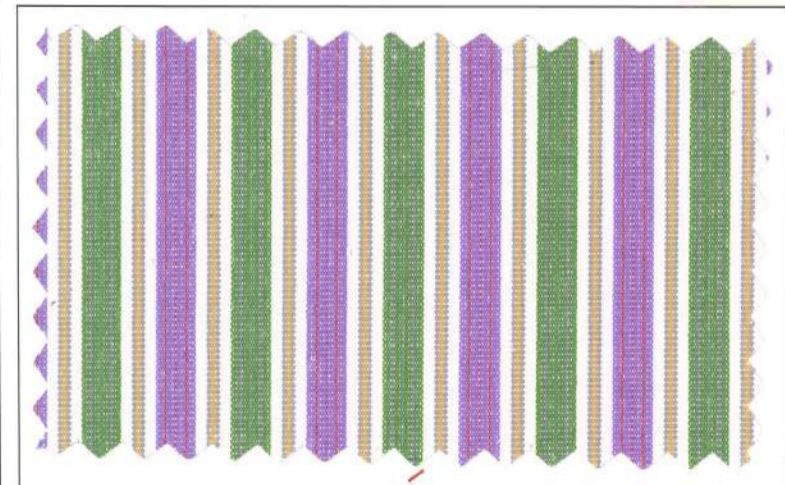




RC-11 | BIG BOSS-596



RC-12 | BIG BOSS-523





ROYAL COLLECTION

RC-13 | BIG BOSS-585

RC-14 | BIG BOSS-5101



RC-15 | BIG BOSS-5122

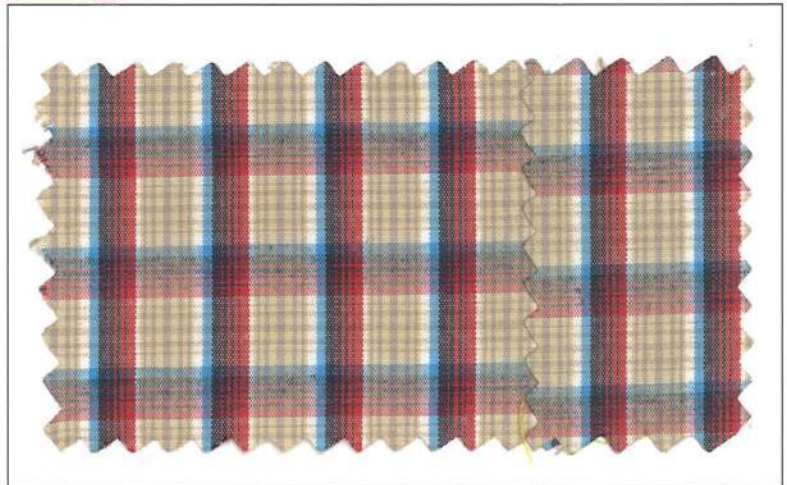
RC-15 | BIG BOSS-5122

RC-16 | BIG BOSS-5132

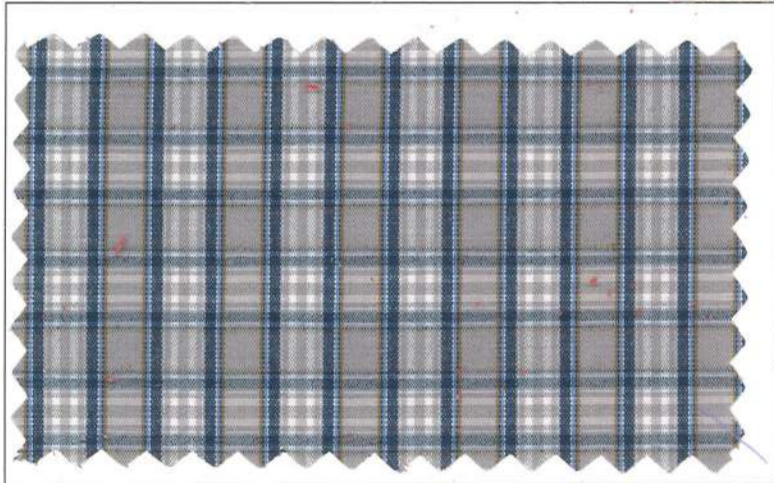
RC-16 | BIG BOSS-5132



RC-17 | BIG BOSS-567



RC-18 | BIG BOSS-595

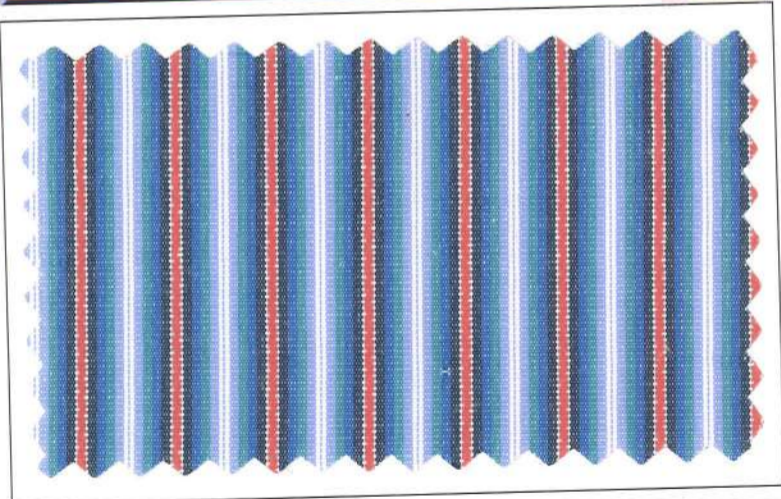




RC-19 | BIG BOSS-567

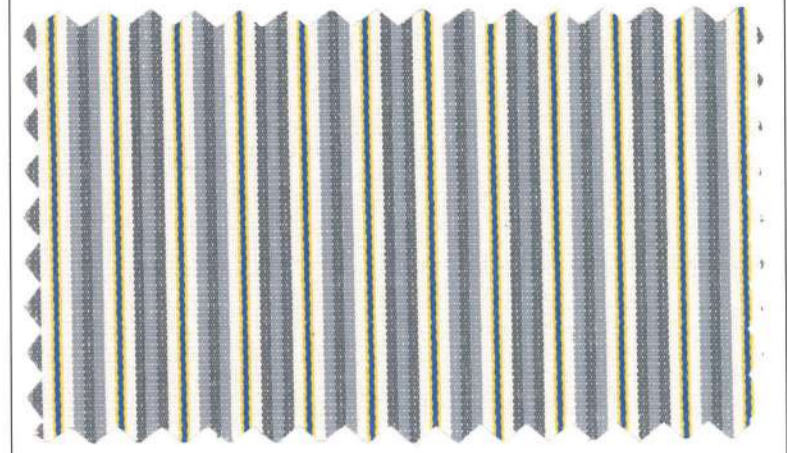


RC-20 | BIG BOSS-585

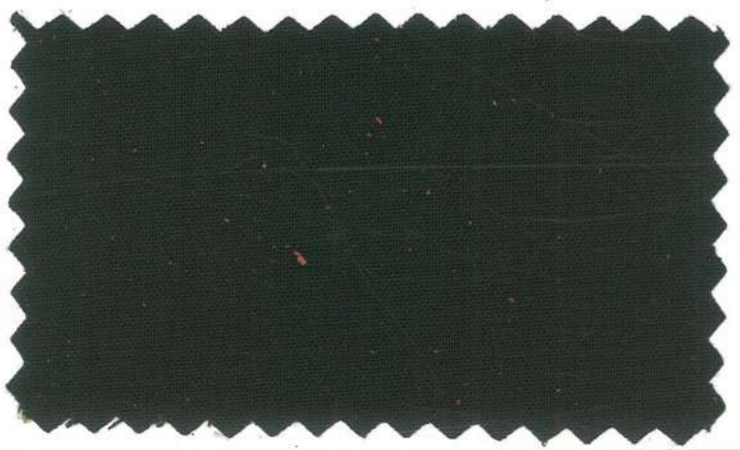
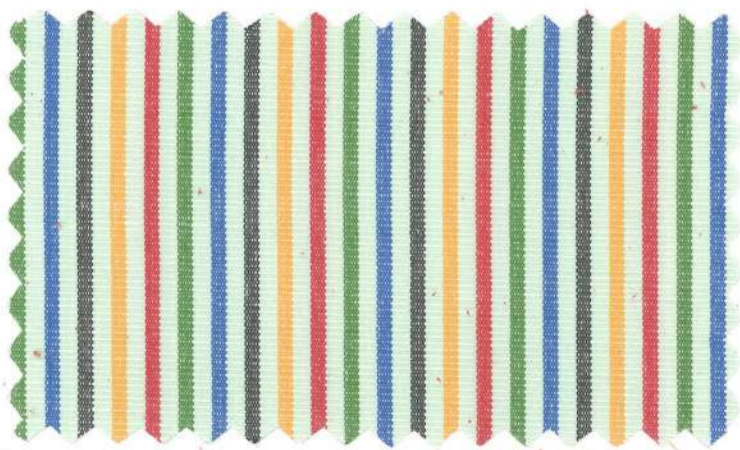




RC-21 | BIG BOSS-527

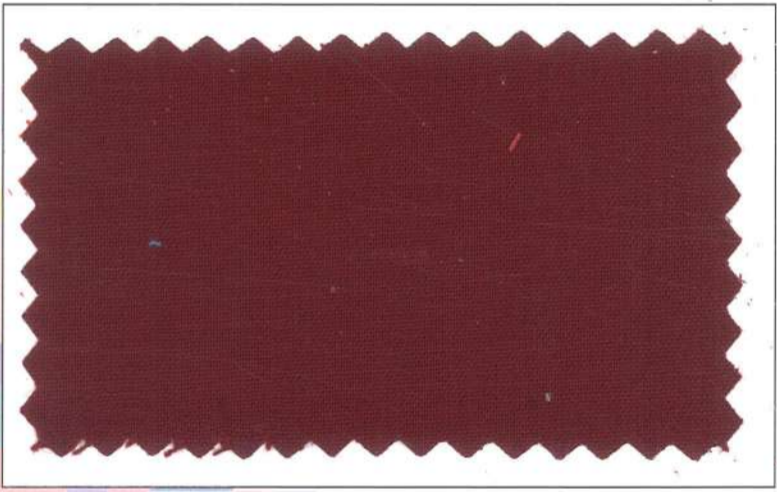
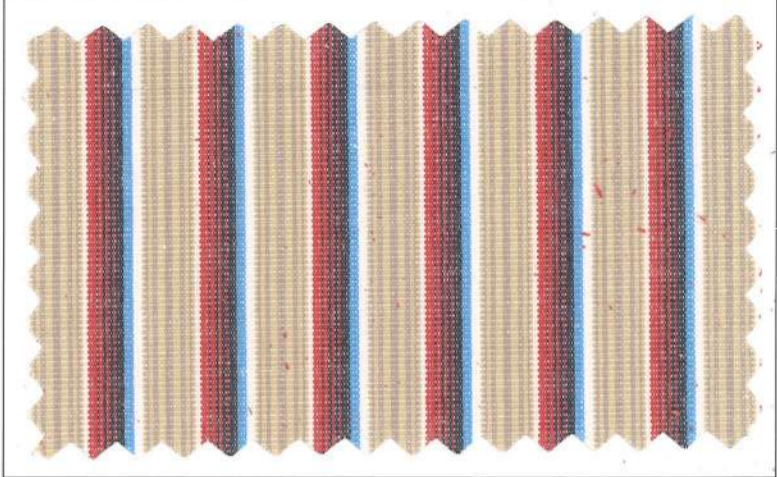


RC-22 | BIG BOSS-5113





RC-23 | BIG BOSS-512





LIBRA



LIBRA-1 | RUSTIC-201

LIBRA-1 | RUSTIC-201

LIBRA-2 | RUSTIC-210

LIBRA-2 | RUSTIC-210



LIBRA-3 | BIG BOSS-5128

LIBRA-4 | BIG BOSS-567



LIBRA-5 | BIG BOSS-543

LIBRA-5 | BIG BOSS-543

LIBRA-6 | RUSTIC-203

LIBRA-6 | RUSTIC-203



LIBRA-7 | BIG BOSS-574

LIBRA-7 | BIG BOSS-574

LIBRA-8 | BIG BOSS-575

LIBRA-8 | BIG BOSS-575





LIBRA-11 | BIG BOSS-572

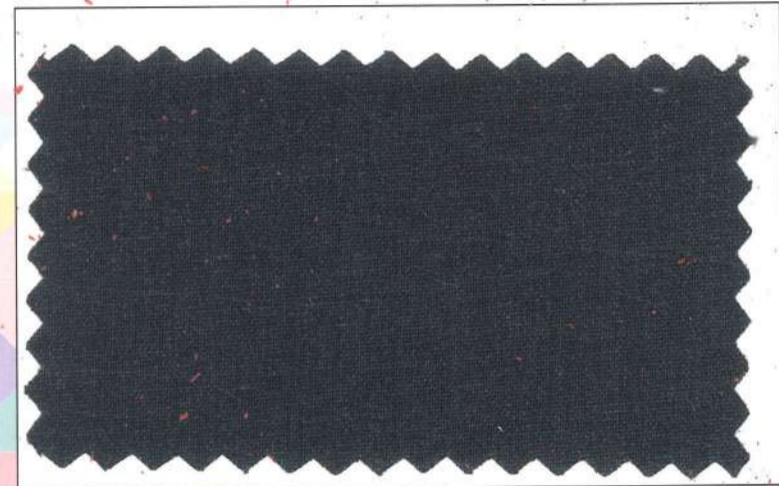
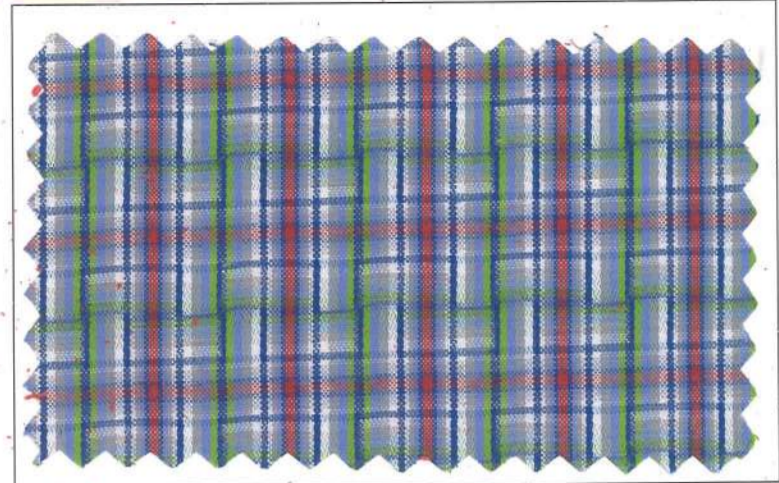
LIBRA-11 | BIG BOSS-572

LIBRA-12 | BIG BOSS-5132

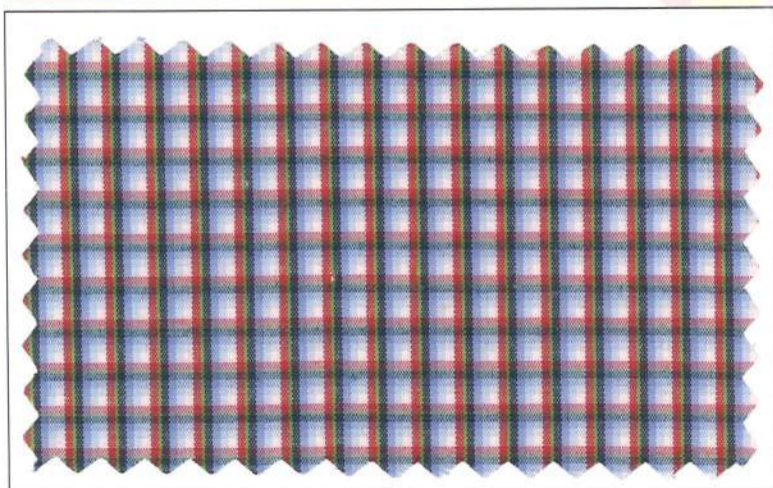
LIBRA-12 | BIG BOSS-5132



LIBRA-13 | BIG BOSS-562



LIBRA-14 | MEMORY-908



SINCE 1905
Mafatlal[®]



ARVIND MAFATLAL GROUP
The ethics of excellence



ME | MAFATLAL
ZEE FABRIC



ARVIND MAFATLAL GROUP
The ethics of excellence



ME | MAFATLAL
ZEE FABRIC

Office Premises no.7&8, Plot no.1825, Lotus House, Vitthaldas Thakersey Marg,
New Marine Lines, Near Liberty Cinema, Mumbai-400020